

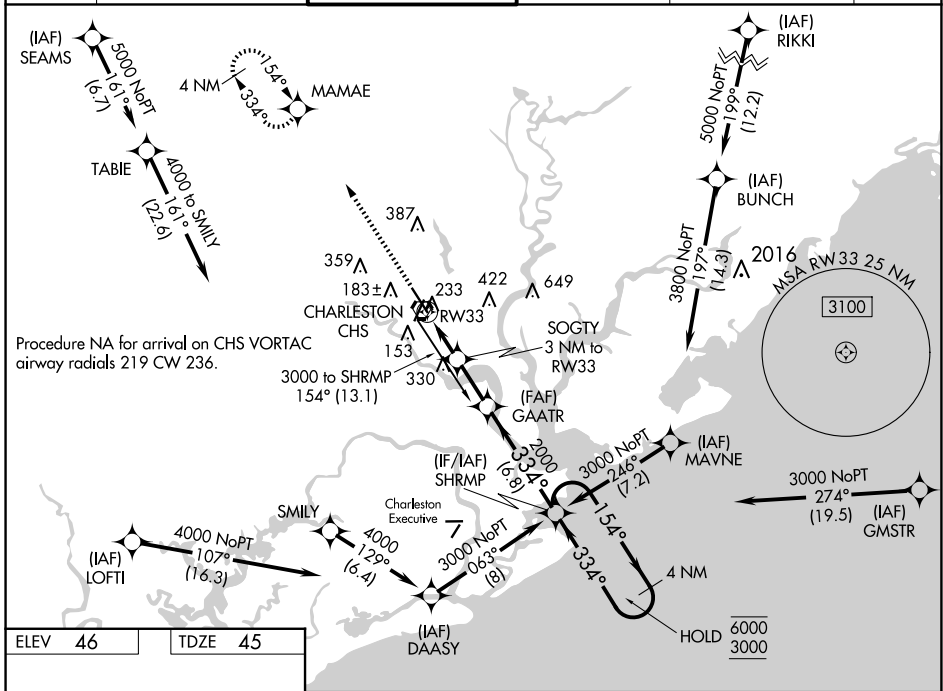
WAAS CH <b>63218</b> <b>W33A</b>	APP CRS <b>334°</b>	Rwy Ldg TDZE Apt Elev	<b>9001</b> <b>45</b> <b>46</b>
--	------------------------	-----------------------------	---------------------------------------

# RNAV (GPS) Y RWY 33

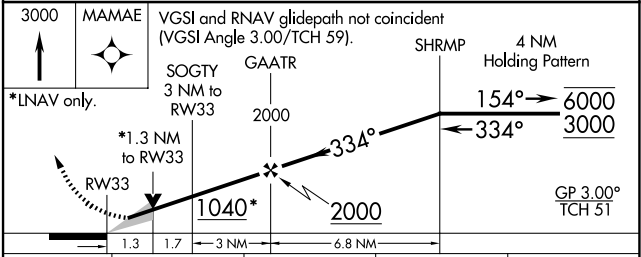
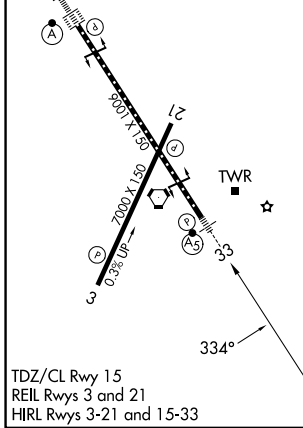
CHARLESTON AFB/INTL (CHS)

RNP APCH.	MALSR 	MISSED APPROACH: Climb to 3000 direct MAMAE and hold, continue to climb-in-hold to 3000.
<p>▼ For uncompensated Baro-VNAV systems, LNAV/VNAV NA below -5°C or above 54°C. # RVR 1800 authorized with use of FD or AP or HUD to DA.</p>		

D-ATIS <b>124.75</b>	CHARLESTON APP CON <b>120.7 306.925</b>	CHARLESTON TOWER <b>126.0 239.0</b>	GND CON <b>121.9 348.6</b>	CLNC DEL <b>127.325 291.65</b>	CPDLC
-------------------------	--	--	-------------------------------	-----------------------------------	-------



ELEV 46	TDZE 45
---------	---------



CATEGORY	A	B	C	D
LPV DA #		245/24	200 (200-½)	
LNAV/VNAV DA		472/40	427 (500-¾)	
LNAV MDA	500/24	455 (500-½)	500/45	455 (500-¾)
<input checked="" type="checkbox"/> CIRCLING	540-1	494 (500-1)	540-1½ 494 (500-1½)	740-2¼ 694 (700-2¼)

SE-2, 16 APR 2026 to 14 MAY 2026

SE-2, 16 APR 2026 to 14 MAY 2026