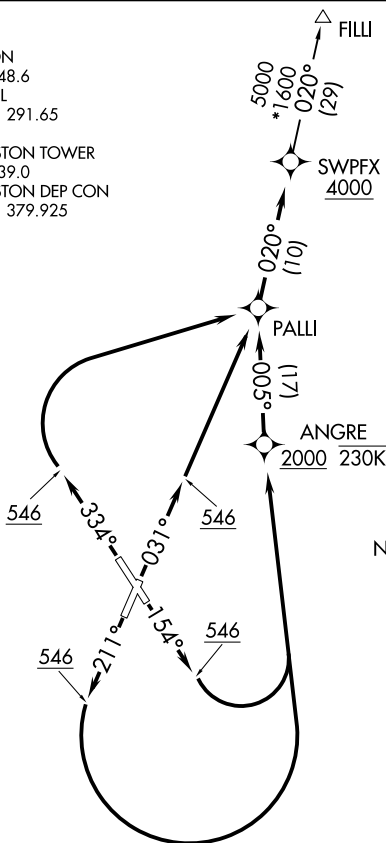


SWPFX THREE DEPARTURE (RNAV)

RNAV 1 - DME/DME/IRU or GPS.
RADAR required for non-GPS equipped aircraft.

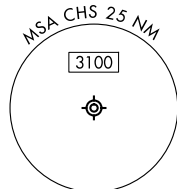
**TOP ALTITUDE:
4000**

D-ATIS
124.75
GND CON
121.9 348.6
CLNC DEL
127.325 291.65
CPDLC
CHARLESTON TOWER
126.0 239.0
CHARLESTON DEP CON
121.275 379.925



TAKEOFF MINIMUMS
Rwys 3, 15, 21, 33: Standard.

NOTE: For non-GPS equipped aircraft, CHS and VAN DMEs must be operational for takeoff Rwy 21.



NOTE: Chart not to scale.

DEPARTURE ROUTE DESCRIPTION

TAKEOFF RUNWAY 3: Climb on heading 031° to 546, then direct PALLI, then on track 020° to cross SWPFX at or above 4000, thence

TAKEOFF RUNWAY 15: Climb on heading 154° to 546, then left turn direct to cross ANGRE at or above 2000 at or below 230K, then on depicted route to cross SWPFX at or above 4000, thence

TAKEOFF RUNWAY 21: Climb on heading 211° to 546, then left turn direct to cross ANGRE at or above 2000 at or below 230K, then on depicted route to cross SWPFX at or above 4000, thence

TAKEOFF RUNWAY 33: Climb on heading 334° to 546, then right turn direct PALLI, then on track 020° to cross SWPFX at or above 4000, thence

. . . . on assigned transition. Maintain 4000. Expect clearance to filed altitude 10 minutes after departure.

FILLI TRANSITION (SWPFX3.FILLI)