

BANKR FIVE ARRIVAL (RNAV)

AL-78 (FAA)

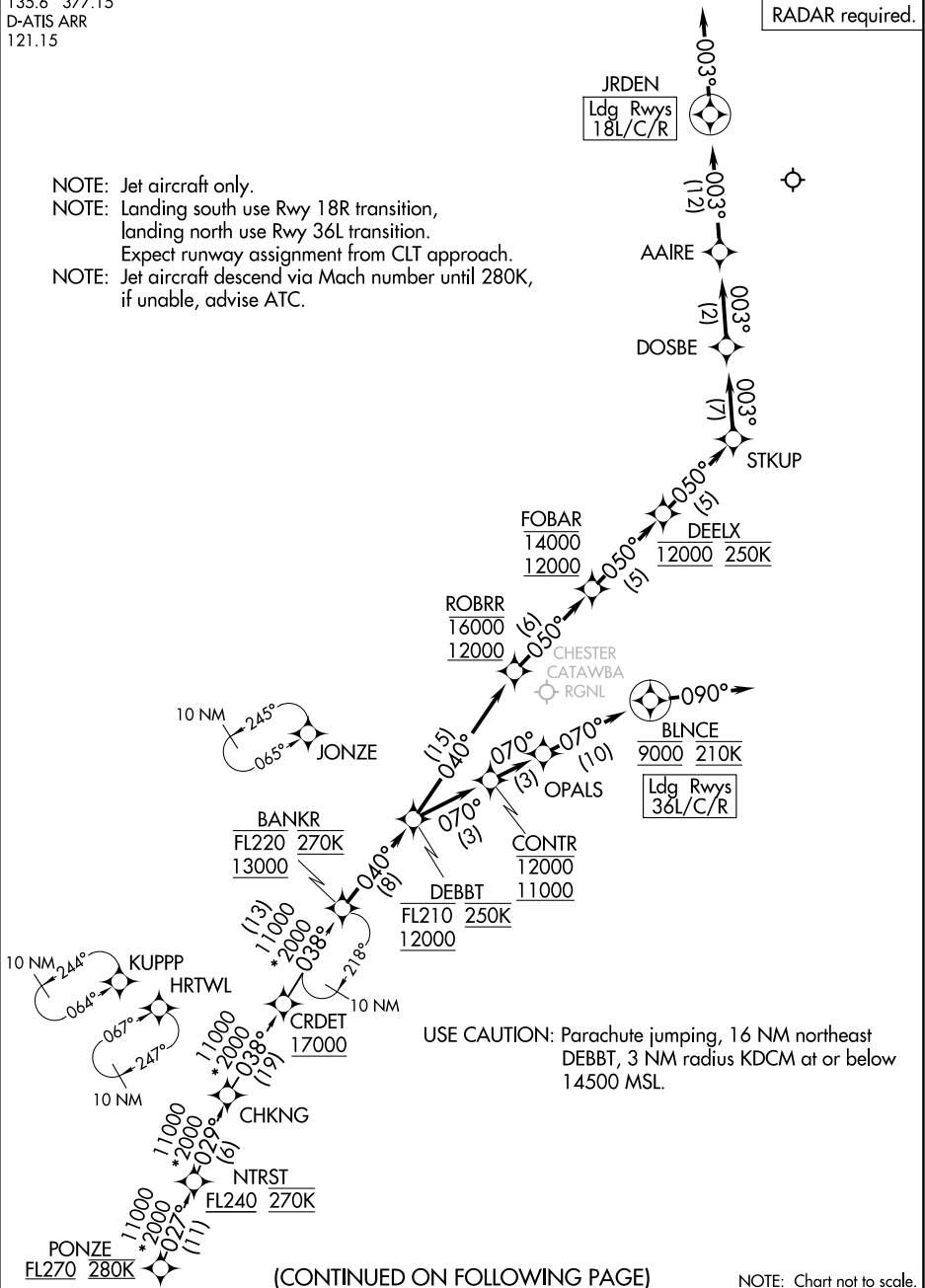
CHARLOTTE/DOUGLAS INTL (CLT)
CHARLOTTE, NORTH CAROLINA

CHARLOTTE APP CON
135.6 377.15
D-ATIS ARR
121.15

RNAV 1 - DME/DME/IRU or GPS.

RADAR required.

- NOTE: Jet aircraft only.
- NOTE: Landing south use Rwy 18R transition, landing north use Rwy 36L transition.
- NOTE: Expect runway assignment from CLT approach.
- NOTE: Jet aircraft descend via Mach number until 280K, if unable, advise ATC.



SE-2, 16 APR 2026 to 14 MAY 2026

SE-2, 16 APR 2026 to 14 MAY 2026

(CONTINUED ON FOLLOWING PAGE)

NOTE: Chart not to scale.

BANKR FIVE ARRIVAL (RNAV)

(BANKR.BANKR5) 16MAY24

CHARLOTTE, NORTH CAROLINA
CHARLOTTE/DOUGLAS INTL (CLT)

ARRIVAL ROUTE DESCRIPTION

PONZE TRANSITION (PONZE.BANKR5)

From BANKR on track 040° to cross DEBBT between 12000 and FL210 and at 250K.

LANDING RUNWAYS 18L/C/R: From DEBBT on track 040° to cross ROBRR between 12000 and 16000, then on track 050° to cross FOBAR between 12000 and 14000, then on track 050° to cross DEELX at 12000 and at 250K, then on track 050° to STKUP, then on track 003° to DOSBE, then on track 003° to AAIRE, then on track 003° to JRDEN, then on track 003°. Expect RADAR vectors to final approach course.

LANDING RUNWAYS 36L/C/R: From DEBBT on track 070° to cross CONTR between 11000 and 12000, then on track 070° to OPALS, then on track 070° to cross BLNCE at 9000 and at 210K, then on track 090°. Expect RADAR vectors to final approach course.

SE-2, 16 APR 2026 to 14 MAY 2026

SE-2, 16 APR 2026 to 14 MAY 2026