

LOC/DME I-RGS 110.15 Chan 38(Y)	APP CRS 183°	Rwy Ldg TDZE 744 Apt Elev 748
---	------------------------	---

ILS RWY 18R (SA CAT I)

CHARLOTTE/DOUGLAS INTL (CLT)

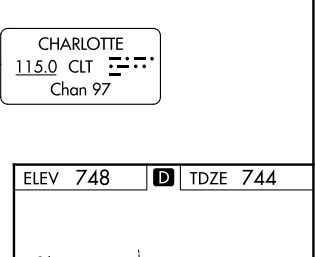
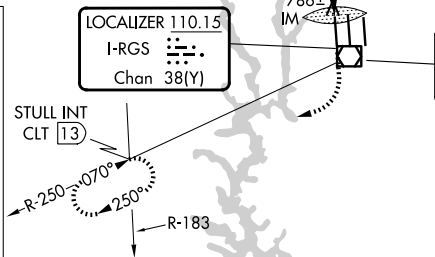
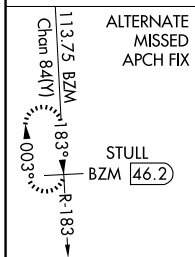
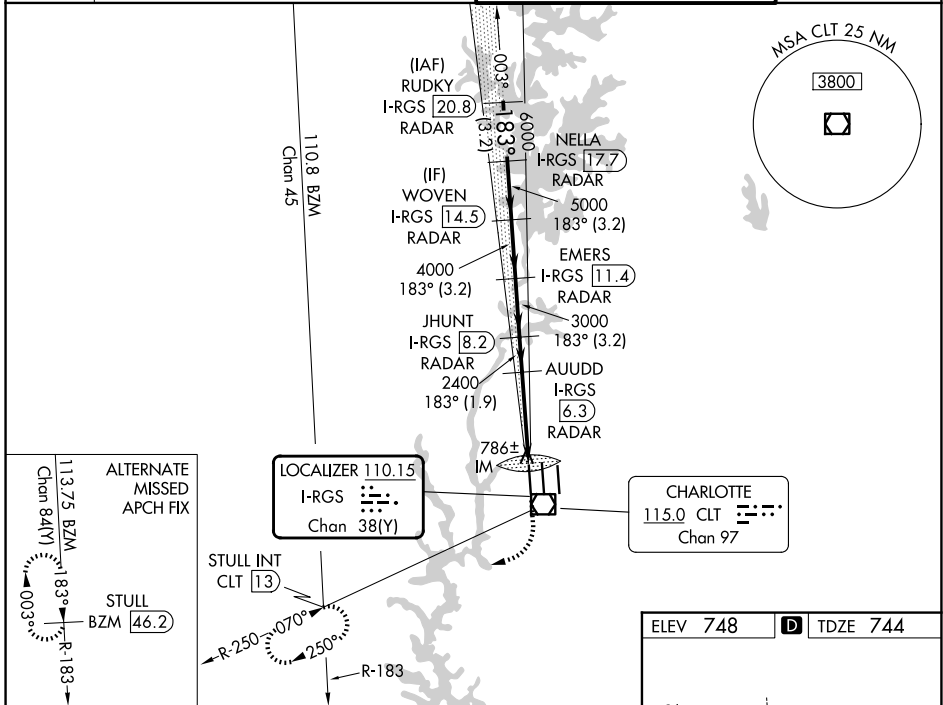
RADAR required for procedure entry. DME or RADAR required.

Simultaneous approach authorized.
Requires specific OPSPEC, MSPEC or LOA approval and use of HUD to DH.

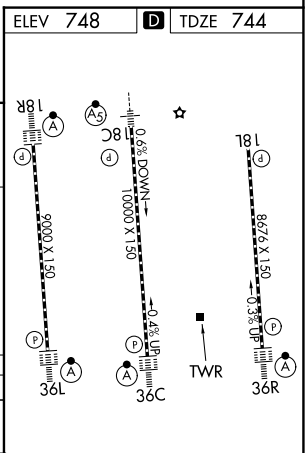
ALSF-2

MISSED APPROACH: Climb to 1200 then climbing right turn to 4000 on CLT VOR/DME R-250 to STULL INT/CLT 13 DME and hold, continue climb-in-hold to 4000.

D-ATIS 121.15	CHARLOTTE APP CON		CHARLOTTE TOWER		GND CON
	128.325 (001°-119°)	257.2 (180°-359°)	118.1 257.8 (Rwys 18L-36R)		121.8 348.6 (W)
	120.05 (120°-295°)	307.8 (360°-179°)	126.4 257.8 (Rwy 18C-36C)		121.9 348.6 (E)
	134.75 (296°-360°)		133.35 257.8 (Rwy 18R-36L)		



VGSi and ILS glidepath not coincident (VGSi Angle 2.80/TCH 65).				
RUDKY I-RGS 20.8 RADAR	NELLA I-RGS 17.7 RADAR	WOVEN I-RGS 14.5 RADAR	EMERS I-RGS 11.4 RADAR	JHUNT I-RGS 8.2 RADAR
AUDD I-RGS 6.3 RADAR	2400	2400	2400	2400
7000	6000	5000	4000	3000
GS 3.00° TCH 55	183°			
	3.2 NM	3.2 NM	3.2 NM	3.2 NM
			1.9 NM	5 NM
				1.078 NM
CATEGORY	A	B	C	D
S-ILS 18R	RA 228/14 150 DA 894			



SA CATEGORY I ILS SPECIAL AIRCREW & AIRCRAFT CERTIFICATION REQUIRED

HIRL all Rwys
REIL Rwys 18L and 23
TDZ/CL Rwys 18R, 36L, 36C and 36R

SE-2, 16 APR 2026 to 14 MAY 2026

SE-2, 16 APR 2026 to 14 MAY 2026