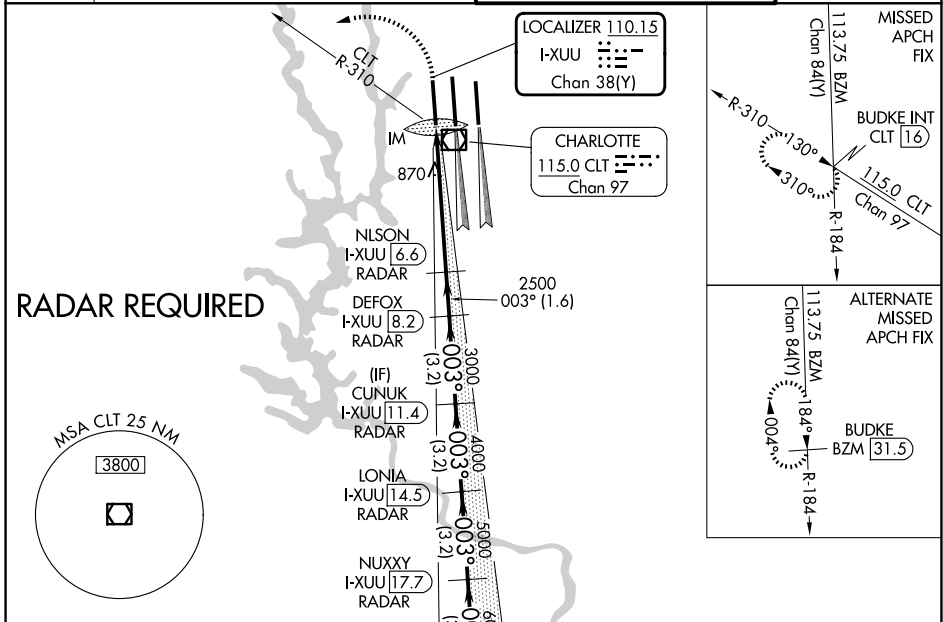


LOC/DME I-XUU 110.15 Chan 38(Y)	APP CRS 003°	Rwy Ldg TDZE 744 Apt Elev 748
--	------------------------	---

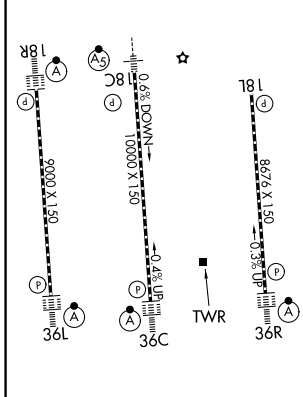
ILS RWY 36L (CAT II & III)

CHARLOTTE/DOUGLAS INTL (CLT)

D-ATIS 121.15	CHARLOTTE APP CON		CHARLOTTE TOWER		GND CON
	128.325 (001°-119°) 120.05 (120°-295°) 134.75 (296°-360°)	257.2 (180°-359°) 307.8 (360°-179°)	118.1 (Rwys 18L-36R) 126.4 (Rwy 18C-36C) 133.35 (Rwy 18R-36L)	257.8	121.8 348.6 (W) 121.9 348.6 (E)



ELEV 748	D	TDZE 744
----------	----------	----------



1200	4000	CLT R-310	BUDKE INT	VGSI and ILS glidepath not coincident (VGSI Angle 3.00/TCH 70).	WELET I-XUU [20.8] RADAR	
841	2500	3000	4000	5000	6000	7000
1120'	-5.3 NM	-1.6 NM	-3.2 NM	-3.2 NM	-3.2 NM	
CATEGORY	A	B	C	D		
S-ILS 36L	CAT II RA 106/12 100 DA 844					
S-ILS 36L	CAT IIIa RVR 07					
S-ILS 36L	CAT IIIb RVR 06					
S-ILS 36L	CAT IIIc NA					

CATEGORY II & III ILS SPECIAL AIRCREW & AIRCRAFT CERTIFICATION REQUIRED

SE-2, 16 APR 2026 to 14 MAY 2026

SE-2, 16 APR 2026 to 14 MAY 2026