

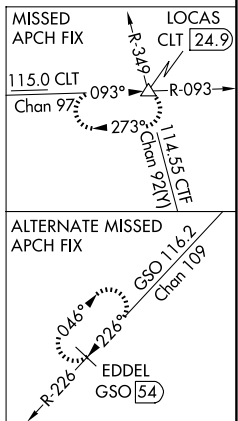
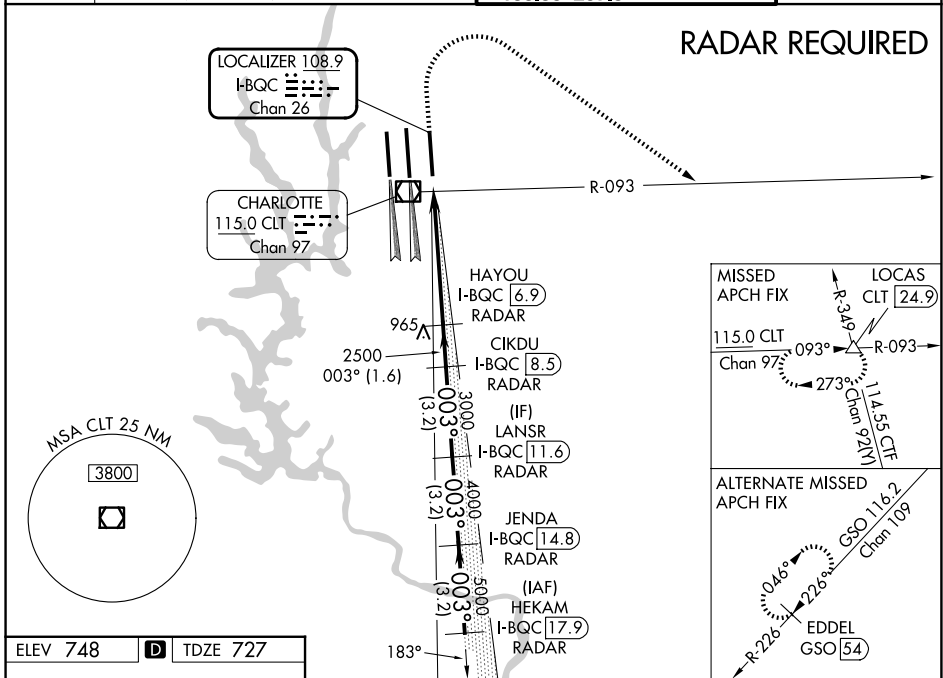
LOC/DME I-BQC 108.9 Chan 26	APP CRS 003°	Rwy Ldg TDZE Apt Elev	8390 727 748
--	------------------------	-----------------------------	---

ILS RWY 36R (CAT II & III)

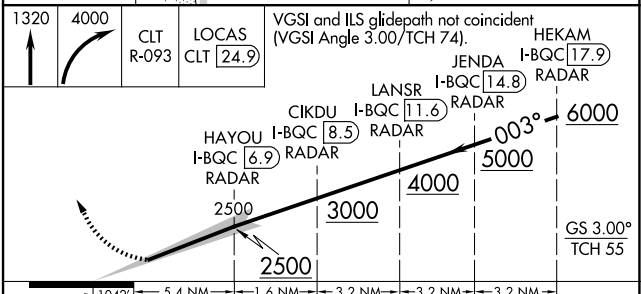
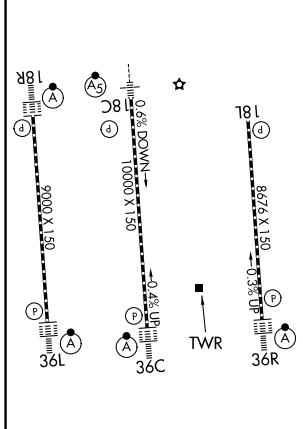
CHARLOTTE/DOUGLAS INTL (CLT)

Simultaneous approach authorized. DME or RADAR required.	ALS-F-2	MISSED APPROACH: Climb to 1320 then climbing right turn to 4000 on CLT VOR/DME R-093 to LOCAS INT/24.9 DME and hold.	

D-ATIS 121.15	CHARLOTTE APP CON		CHARLOTTE TOWER		GND CON
	128.325 (001°-119°)	257.2 (180°-359°)	118.1 257.8 (Rwys 18L-36R)	126.4 257.8 (Rwy 18C-36C)	121.8 348.6 (W)
	120.05 (120°-295°)	307.8 (360°-179°)	133.35 257.8 (Rwy 18R-36L)		121.9 348.6 (E)
	134.75 (296°-360°)				



ELEV 748	D	TDZE 727
----------	----------	----------



CATEGORY	A	B	C	D
S-ILS 36R	CAT II RA 119/12 100 DA 827			
S-ILS 36R	CAT IIIa RVR 06			
S-ILS 36R	CAT IIIb NA			
S-ILS 36R	CAT IIIc NA			

CATEGORY II & III ILS SPECIAL AIRCREW & AIRCRAFT CERTIFICATION REQUIRED

SE-2, 16 APR 2026 to 14 MAY 2026

SE-2, 16 APR 2026 to 14 MAY 2026