

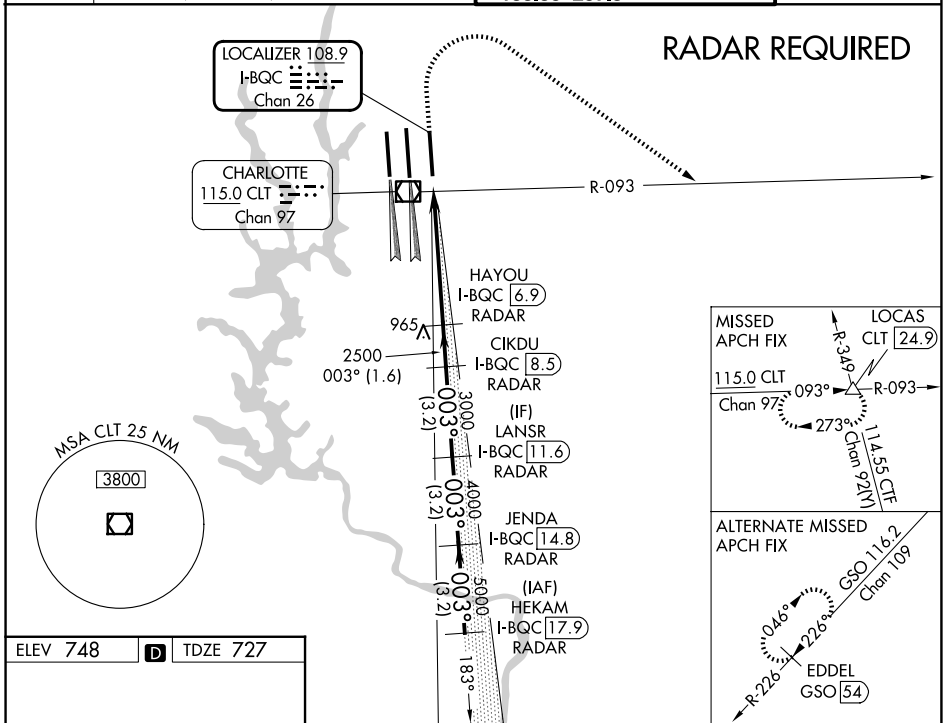
LOC/DME I-BQC <b>108.9</b> Chan 26	APP CRS <b>003°</b>	Rwy Ldg TDZE <b>727</b> Apt Elev <b>748</b>
--	------------------------	---

# ILS RWY 36R (SA CAT I)

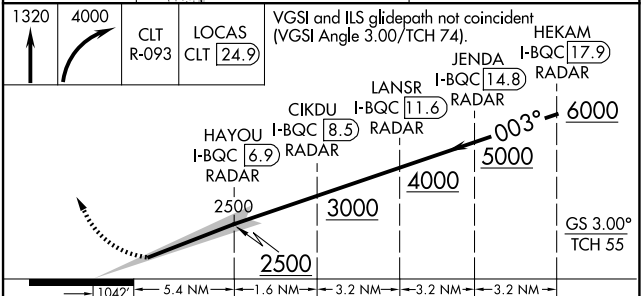
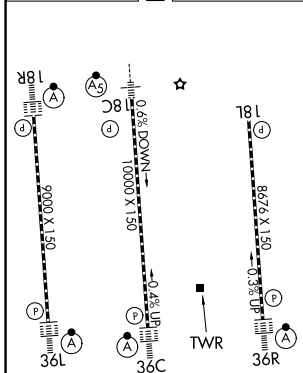
CHARLOTTE/DOUGLAS INTL (CLT)

<p>Simultaneous approach authorized. DME or RADAR required. Requires specific OPSPEC, MSPEC or LOA approval and use of HUD to DH.</p>	<p>ALSIF-2</p>	<p>MISSED APPROACH: Climb to 1320 then climbing right turn to 4000 on CLT VOR/DME R-093 to LOCAS INT/24.9 DME and hold.</p>
---	----------------	---

D-ATIS <b>121.15</b>	CHARLOTTE APP CON <b>128.325</b> (001°-119°) <b>120.05</b> (120°-295°) <b>134.75</b> (296°-360°)	<b>257.2</b> (180°-359°) <b>307.8</b> (360°-179°)	CHARLOTTE TOWER <b>118.1</b> <b>257.8</b> (Rwys 18L-36R) <b>126.4</b> <b>257.8</b> (Rwy 18C-36C) <b>133.35</b> <b>257.8</b> (Rwy 18R-36L)	GND CON <b>121.8</b> <b>348.6</b> (W) <b>121.9</b> <b>348.6</b> (E)
-------------------------	---	--	--	---



ELEV 748	<b>D</b>	TDZE 727
----------	----------	----------



CATEGORY	A	B	C	D
S-ILS 36R	RA 173/14 150 DA 877			

## SA CATEGORY I ILS SPECIAL AIRCREW & AIRCRAFT CERTIFICATION REQUIRED

SE-2, 16 APR 2026 to 14 MAY 2026

SE-2, 16 APR 2026 to 14 MAY 2026