

LOC/DME I-PEP <b>111.3</b> Chan 50	APP CRS <b>183°</b>	Rwy Ldg <b>10000</b> TDZE <b>742</b> Apt Elev <b>748</b>
--	------------------------	--

# ILS or LOC RWY 18C

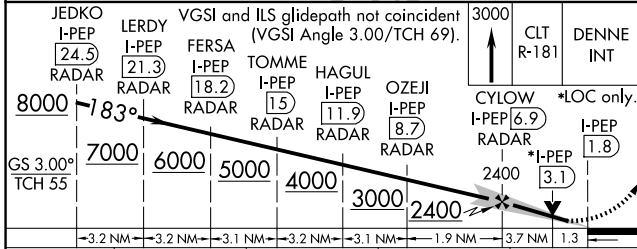
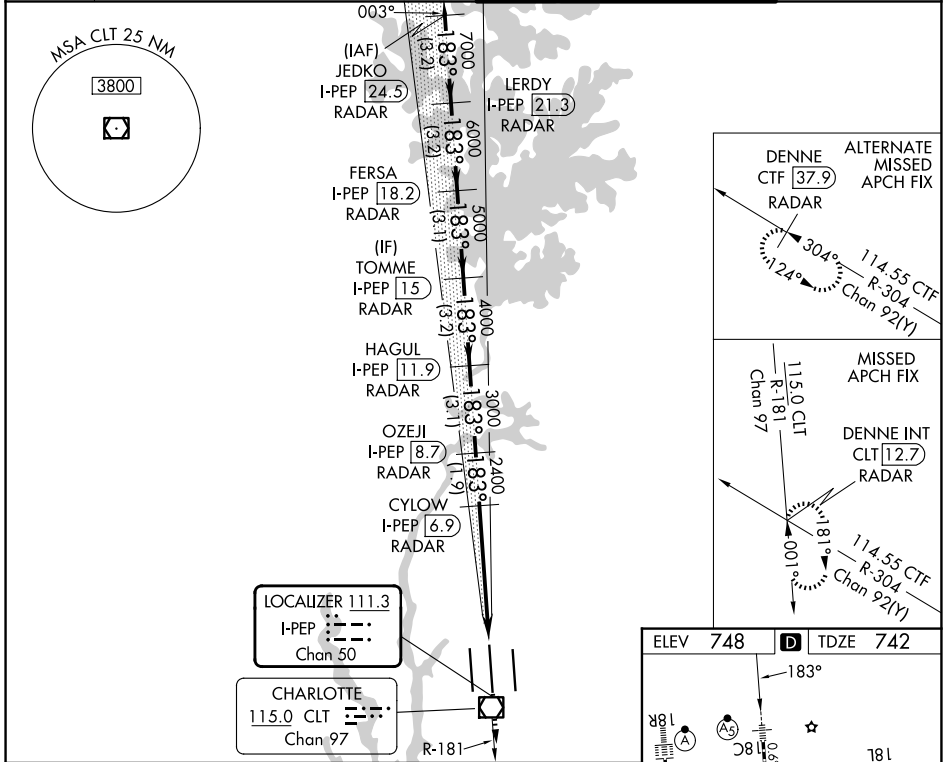
CHARLOTTE/DOUGLAS INTL (CLT)

RADAR required for procedure entry. DME or RADAR required

MAJRS

MISSED APPROACH: Climb to 3000 on CLT VOR/DME R-181 to DENNE INT/CLT 12.7 DME/RADAR and hold.

D-ATIS <b>121.15</b>	CHARLOTTE APP CON <b>128.325</b> (001°-119°) <b>120.05</b> (120°-295°) <b>134.75</b> (296°-360°)	<b>257.2</b> (180°-359°) <b>307.8</b> (360°-179°)	CHARLOTTE TOWER <b>118.1 257.8</b> (Rwys 18L-36R) <b>126.4 257.8</b> (Rwy 18C-36C) <b>133.35 257.8</b> (Rwy 18R-36L)	GND CON <b>121.8 348.6</b> (W) <b>121.9 348.6</b> (E)
-------------------------	---	--	---	---



CATEGORY	A	B	C	D
S-ILS 18C **	942/24 200 (200-½)			
S-LOC 18C	1220/24 478 (500-½)	1220/50 478 (500-1)		
CIRCLING	1380-1 632 (700-1)	1500-2¼ 752 (800-2¼)	1500-2½ 752 (800-2½)	

FAF to MAP 5 NM

Knots	60	90	120	150	180
Min:Sec	5:00	3:20	2:30	2:00	1:40

SE-2, 16 APR 2026 to 14 MAY 2026

SE-2, 16 APR 2026 to 14 MAY 2026