

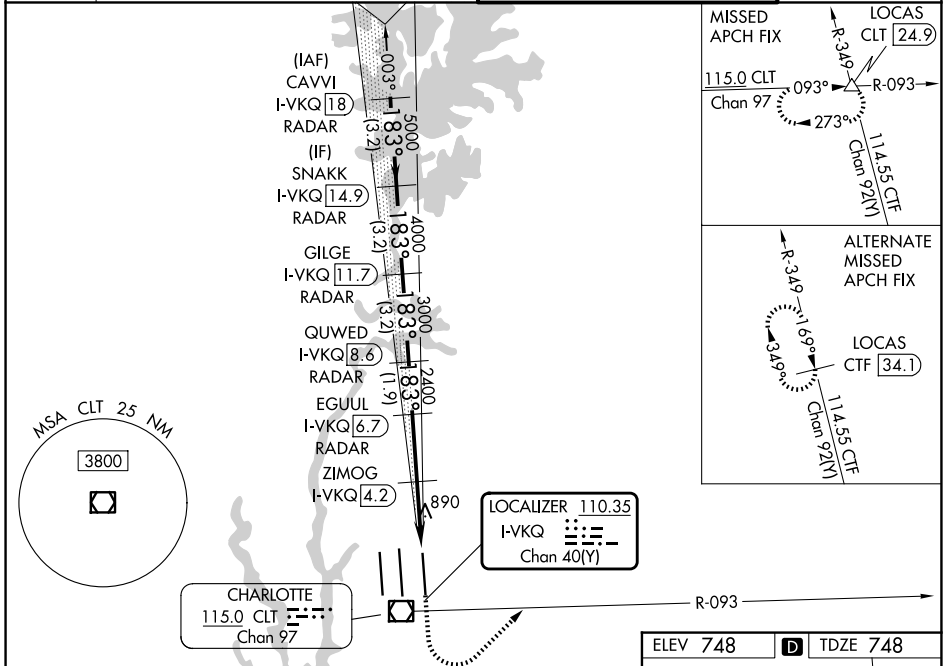
LOC/DME I-VKQ 110.35 Chan 40(Y)	APP CRS 183°	Rwy Ldg 8676 TDZE 748 Apt Elev 748
--	------------------------	--

ILS or LOC RWY 18L

CHARLOTTE/DOUGLAS INTL (CLT)

RADAR required for procedure entry. DME or RADAR required. MISSED APPROACH: Climb to 1300 then climbing left turn to 4000 on CLT VOR/DME R-093 to LOCAS INT/CLT 24.9 DME and hold.

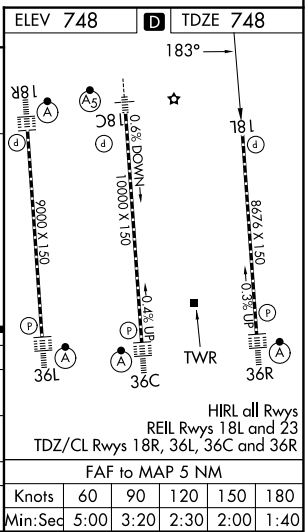
<p>Simultaneous approach authorized. Rwy 18L helicopter visibility reduction below RVR 4000 NA.</p>	CHARLOTTE APP CON		CHARLOTTE TOWER		GND CON	
	D-ATIS 121.15	128.325 (001°-119°) 120.05 (120°-295°) 134.75 (296°-360°)	257.2 (180°-359°) 307.8 (360°-179°)	118.1 (Rwys 18L-36R) 126.4 (Rwy 18C-36C) 133.35 (Rwy 18R-36L)	257.8 257.8 257.8	121.8 348.6 (W) 121.9 348.6 (E)



SE-2, 16 APR 2026 to 14 MAY 2026

SE-2, 16 APR 2026 to 14 MAY 2026

<p>CAVVI I-VKQ (18) RADAR</p> <p>SNAKK I-VKQ (14.9) RADAR</p> <p>GILGE I-VKQ (11.7) RADAR</p> <p>QUWED I-VKQ (8.6) RADAR</p> <p>EGUUL I-VKQ (6.7) RADAR</p> <p>ZIMOG I-VKQ (4.2) RADAR</p>		<p>1300</p> <p>4000</p> <p>CLT R-093</p> <p>LOCAS CLT 24.9</p>	<p>LOC only</p>																									
<p>6000</p> <p>5000</p> <p>4000</p> <p>3000</p> <p>2400</p> <p>1260</p> <p>GS 3.00° TCH 56</p>	<p>783°</p> <p>183°</p>	<p>3.2 NM</p> <p>3.2 NM</p> <p>3.2 NM</p> <p>1.9 NM</p> <p>2.4 NM</p> <p>1.6 NM</p> <p>1 NM</p>	<p>*LOC only</p>																									
<table border="1"> <tr> <th>CATEGORY</th> <th>A</th> <th>B</th> <th>C</th> <th>D</th> </tr> <tr> <td>S-ILS 18L</td> <td colspan="4">1002/40 254 (300-¾)</td> </tr> <tr> <td>S-LOC 18L</td> <td>1260/55</td> <td>512 (600-1)</td> <td>1260-1⅓</td> <td>512 (600-1⅓)</td> </tr> <tr> <td colspan="5">ZIMOG FIX MINIMUMS (DME REQUIRED)</td> </tr> <tr> <td>S-LOC 18L</td> <td>1140/55</td> <td>392 (400-1)</td> <td>1140/60</td> <td>392 (400-1¼)</td> </tr> </table>	CATEGORY	A	B	C	D	S-ILS 18L	1002/40 254 (300-¾)				S-LOC 18L	1260/55	512 (600-1)	1260-1⅓	512 (600-1⅓)	ZIMOG FIX MINIMUMS (DME REQUIRED)					S-LOC 18L	1140/55	392 (400-1)	1140/60	392 (400-1¼)			
CATEGORY	A	B	C	D																								
S-ILS 18L	1002/40 254 (300-¾)																											
S-LOC 18L	1260/55	512 (600-1)	1260-1⅓	512 (600-1⅓)																								
ZIMOG FIX MINIMUMS (DME REQUIRED)																												
S-LOC 18L	1140/55	392 (400-1)	1140/60	392 (400-1¼)																								



<p>ELEV 748</p> <p>TDZE 748</p>	
<p>HIRL all Rwws REIL Rwws 18L and 23 TDZ/CL Rwws 18R, 36L, 36C and 36R</p>	
<p>FAF to MAP 5 NM</p>	
Knots	60 90 120 150 180
Min:Sec	5:00 3:20 2:30 2:00 1:40