

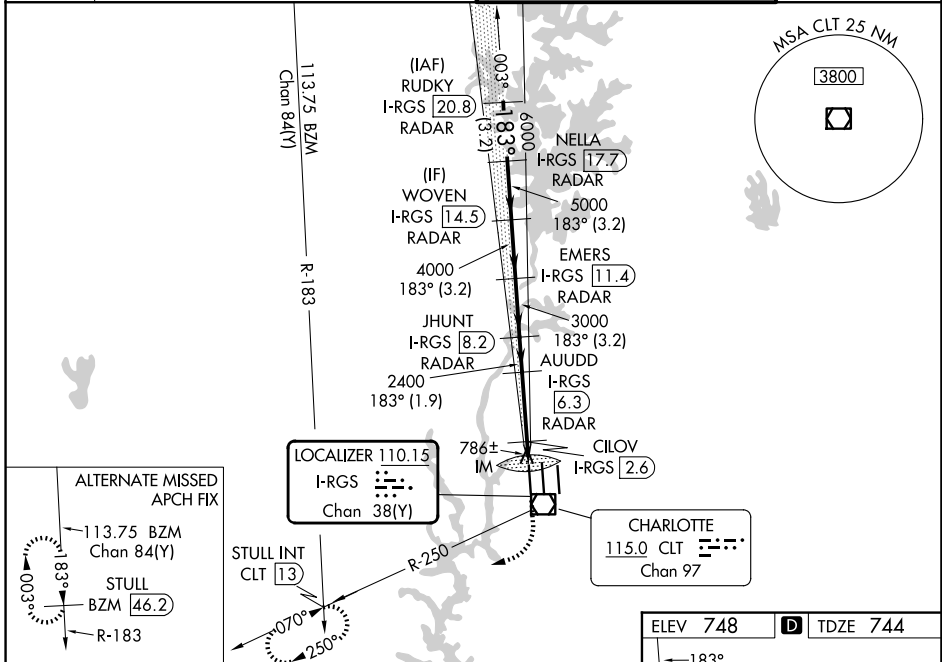
| | | |
|---|------------------------|---|
| LOC/DME I-RGS 110.15 Chan 38(Y) | APP CRS 183° | Rwy Ldg 9000 TDZE 744 Apt Elev 748 |
|---|------------------------|---|

I LS or LOC RWY 18R

CHARLOTTE/DOUGLAS INTL (CLT)

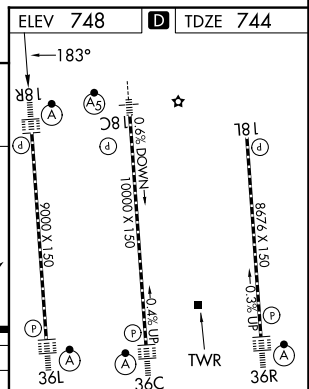
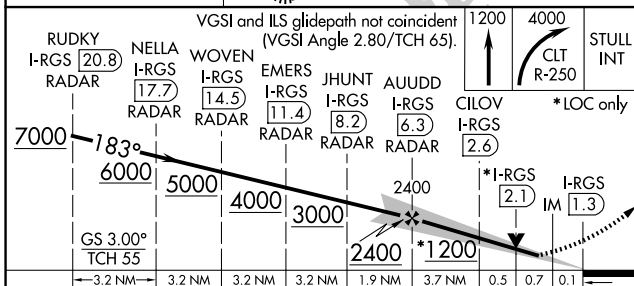
| | | | |
|---|--|-------------|--|
| RADAR required for procedure entry. DME or RADAR required. | | ALSF-2 A | MISSED APPROACH: Climb to 1200 then climbing right turn to 4000 on CLT VOR/DME R-250 to STULL INT/CLT 13 DME and hold, continue climb-in-hold to 4000. |
| Simultaneous approach authorized. CILOV minimums: For inop ALS, increase S-LOC 18R all Cats visibility to RVR 4500. | | | |

| | | | | |
|-------------------------|---|--|--|---|
| D-ATIS 121.15 | CHARLOTTE APP CON 128.325 (001°-119°) 257.2 (180°-359°) 120.05 (120°-295°) 307.8 (360°-179°) 134.75 (296°-360°) | | CHARLOTTE TOWER 118.1 257.8 (Rwys 18L-36R) 126.4 257.8 (Rwy 18C-36C) 133.35 257.8 (Rwy 18R-36L) | GND CON 121.8 348.6 (W) 121.9 348.6 (E) |
|-------------------------|---|--|--|---|



SE-2, 16 APR 2026 to 14 MAY 2026

SE-2, 16 APR 2026 to 14 MAY 2026



| | | | | |
|-----------------------------------|---------------------|---------------------|---|---|
| CATEGORY | A | B | C | D |
| S-ILS 18R | 944/18 200 (200-½) | | | |
| S-LOC 18R | 1200/24 456 (500-½) | 1200/45 456 (500-¾) | | |
| CILOV FIX MINIMUMS (DME REQUIRED) | | | | |
| S-LOC 18R | 1040/24 296 (300-½) | | | |

| | | | | | |
|--|------|------|------|------|------|
| HIRL all Rwys REIL Rwys 18L and 23 TDZ/CL Rwys 18R, 36L, 36C and 36R | | | | | |
| FAF to MAP 5 NM | | | | | |
| Knots | 60 | 90 | 120 | 150 | 180 |
| Min:Sec | 5:00 | 3:20 | 2:30 | 2:00 | 1:40 |