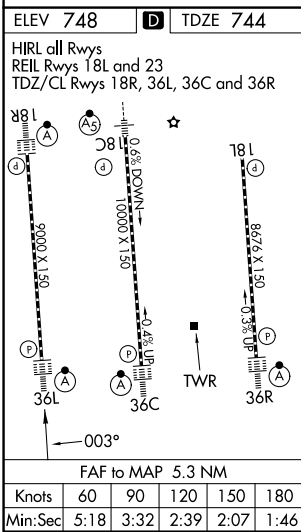
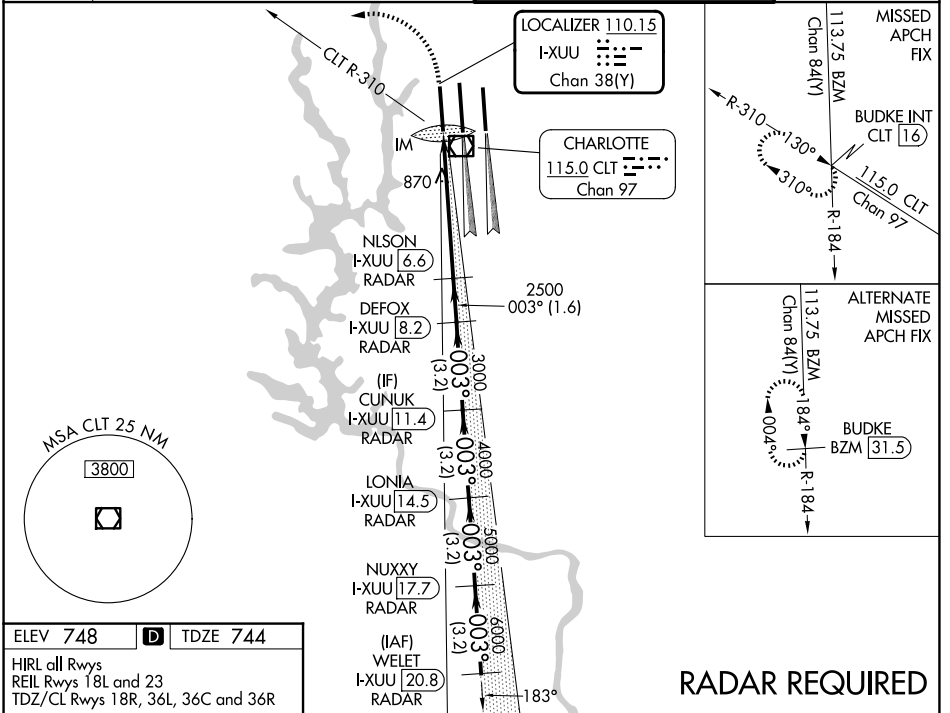


LOC/DME I-XUU <b>110.15</b> Chan 38(Y)	APP CRS <b>003°</b>	Rwy Ldg TDZE Apt Elev	<b>9000</b> <b>744</b> <b>748</b>
--	------------------------	-----------------------------	---

# ILS or LOC RWY 36L

CHARLOTTE/DOUGLAS INTL (CLT)

D-ATIS <b>121.15</b>	CHARLOTTE APP CON		CHARLOTTE TOWER		GND CON
	<b>128.325</b> (001°-119°)	<b>257.2</b> (180°-359°)	<b>118.1</b> <b>257.8</b> (Rwys 18L-36R)	<b>126.4</b> <b>257.8</b> (Rwy 18C-36C)	<b>121.8 348.6 (W)</b> <b>121.9 348.6 (E)</b>
	<b>120.05</b> (120°-295°)	<b>307.8</b> (360°-179°)	<b>133.35</b> <b>257.8</b> (Rwy 18R-36L)		
	<b>134.75</b> (296°-360°)				



1200	4000	CLT R-310	BUDKE INT	VGSI and ILS glidepath not coincident (VGSI Angle 3.00/TCH 70).	WELET I-XUU [20.8] RADAR
*LOC only.					
I-XUU [1.3]	I-XUU [2.5]	NLSON I-XUU [6.6] RADAR	DEFOX I-XUU [8.2] RADAR	CUNUK I-XUU [11.4] RADAR	LONIA I-XUU [14.5] RADAR
					NUXXY I-XUU [17.7] RADAR
					003° 7000
					6000
					5000
					4000
					3000
					2500
					GS 3.00° TCH 55
					0.1 1.1 NM 4.1 NM 1.6 NM 3.2 NM 3.2 NM 3.2 NM 3.2 NM
CATEGORY	A		B		D
S-ILS 36L	944/18 200 (200-½)				
S-LOC 36L	1180/24	436 (500-½)	1180/40	436 (500-¾)	
CIRCLING	1380-1	632 (700-1)	1500-2¼	1500-2½	752 (800-2¼) 752 (800-2½)

SE-2, 16 APR 2026 to 14 MAY 2026

SE-2, 16 APR 2026 to 14 MAY 2026