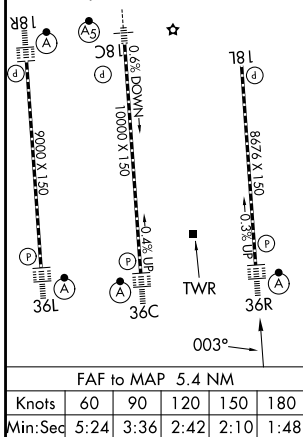
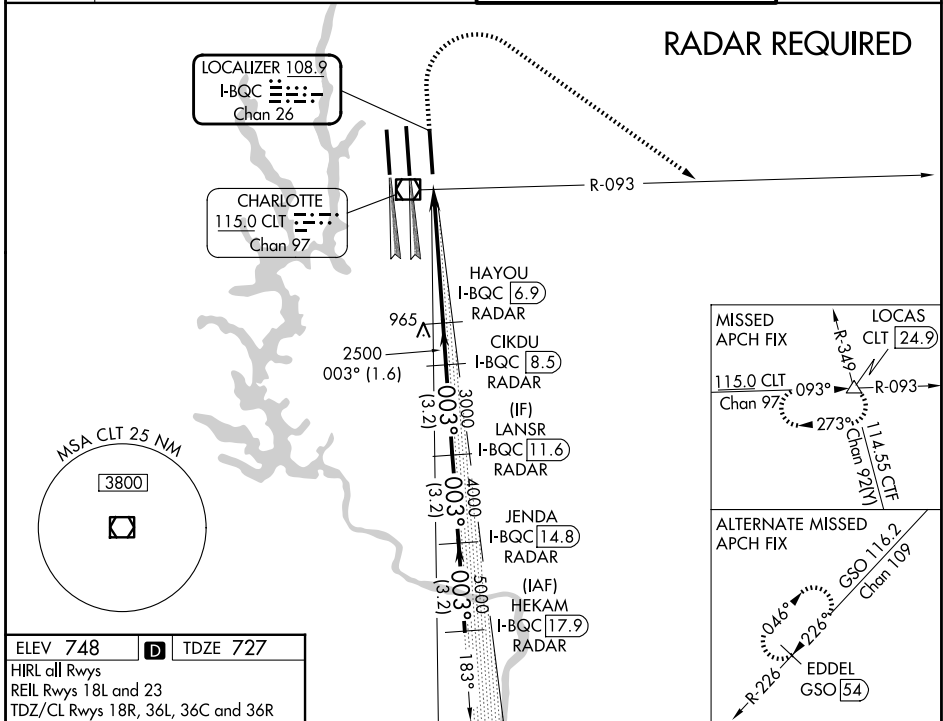


LOC/DME I-BQC <b>108.9</b> Chan 26	APP CRS <b>003°</b>	Rwy Ldg TDZE Apt Elev	<b>8390</b> <b>727</b> <b>748</b>
--	------------------------	-----------------------------	---

# ILS or LOC RWY 36R

CHARLOTTE/DOUGLAS INTL (CLT)

<p><b>⚠</b> Circling NA at night. Simultaneous approach authorized. DME or RADAR required.</p>	<p>ALS-F-2</p>		<p>MISSED APPROACH: Climb to 1320 then climbing right turn to 4000 on CLT VOR/DME R-093 to LOCAS INT/24.9 DME and hold.</p>	
	<p>D-ATIS <b>121.15</b></p>	<p>CHARLOTTE APP CON</p> <p><b>128.325</b> (001°-119°)    <b>257.2</b> (180°-359°) <b>120.05</b> (120°-295°)    <b>307.8</b> (360°-179°) <b>134.75</b> (296°-360°)</p>		<p>CHARLOTTE TOWER</p> <p><b>118.1</b>    <b>257.8</b> (Rwys 18L-36R) <b>126.4</b>    <b>257.8</b> (Rwy 18C-36C) <b>133.35</b>    <b>257.8</b> (Rwy 18R-36L)</p>
			<p>GND CON</p> <p><b>121.8</b>    <b>348.6</b> (W) <b>121.9</b>    <b>348.6</b> (E)</p>	



1320	4000	CLT R-093	LOCAS	VGSJ and ILS glidepath not coincident (VGSJ Angle 3.00/TCH 74).	HEKAM I-BQC [17.9] RADAR			
* LOC only.								
CATEGORY	A		B		C		D	
S-ILS 36R	927/18 200 (200-½)							
S-LOC 36R	1120/24 393 (400-½)				1120/35 393 (400-¾)			
CIRCLING	1380-1 632 (700-1)				1500-2¼ 752 (800-2¼)		1500-2½ 752 (800-2½)	

SE-2, 16 APR 2026 to 14 MAY 2026

SE-2, 16 APR 2026 to 14 MAY 2026