

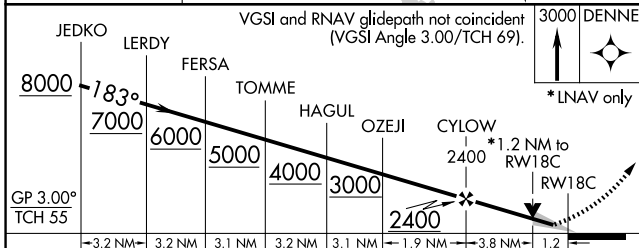
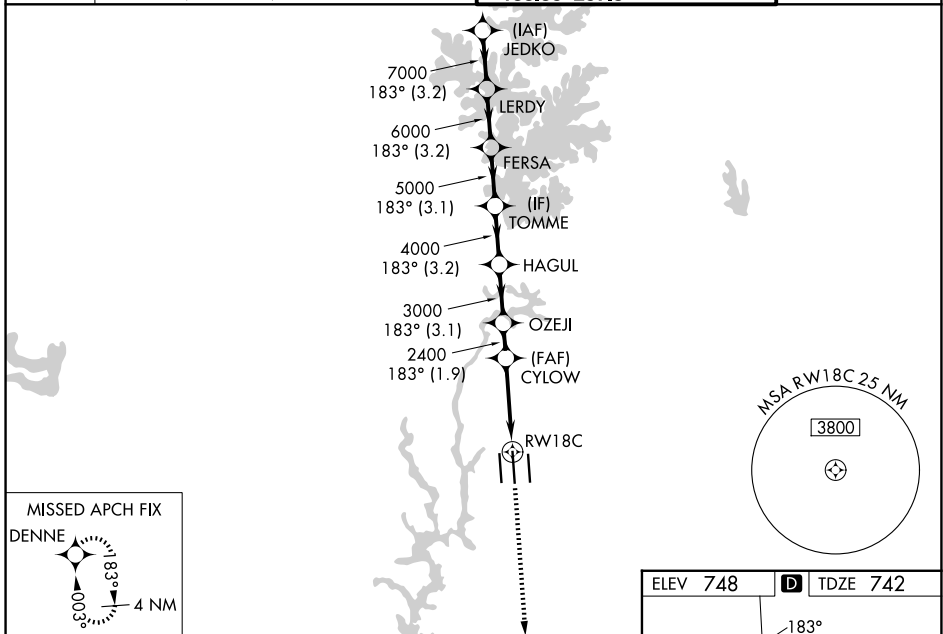
WAAS CH 81800 W18B	APP CRS 183°	Rwy Ldg 10000 TDZE 742 Apt Elev 748
--	------------------------	--

RNAV (GPS) Y RWY 18C

CHARLOTTE/DOUGLAS INTL (CLT)

RNP APCH.	<p>⚠ Circling NA at night. Simultaneous approach authorized. LNAV procedure NA during simultaneous operations. Use of FD or AP required during simultaneous operations. For uncompensated Baro-VNAV systems, LNAV/VNAV NA below -11°C or above 54°C. ** RVR 1800 authorized with use of FD or AP or HUD to DA.</p>	MALSR 	MISSED APPROACH: Climb to 3000 direct DENNE and hold.
-----------	---	-----------	--

D-ATIS 121.15	CHARLOTTE APP CON 128.325 (001°-119°) 120.05 (120°-295°) 134.75 (296°-360°)	CHARLOTTE TOWER 118.1 257.8 (Rwys 18L-36R) 126.4 257.8 (Rwy 18C-36C) 133.35 257.8 (Rwy 18R-36L)	GND CON 121.8 348.6 (W) 121.9 348.6 (E)
-------------------------	---	--	---



CATEGORY	A	B	C	D
LPV DA **	942/24		200 (200-½)	
LNAV/VNAV DA	1070/26		328 (400-½)	
LNAV MDA	1200/24	458 (500-½)	1200/45	458 (500-¾)
CIRCLING	1380-1	632 (700-1)	1500-2¼ 752 (800-2¼)	1500-2½ 752 (800-2½)

