

WAAS CH <b>77500</b> <b>W18A</b>	APP CRS <b>183°</b>	Rwy Ldg TDZE Apt Elev <b>8676</b> <b>748</b> <b>748</b>
--	------------------------	--

# RNAV (GPS) Y RWY 18L

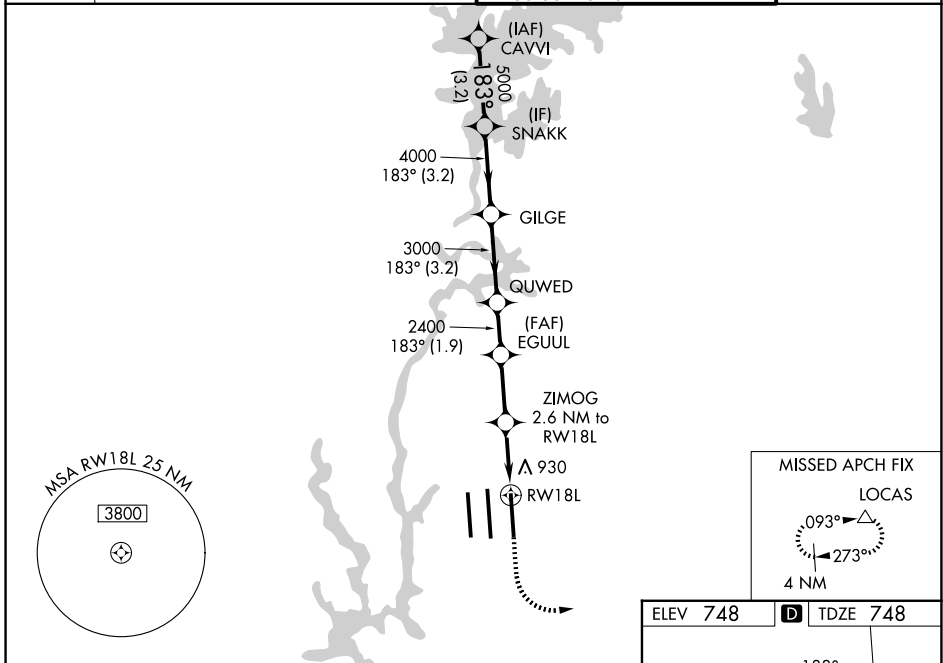
CHARLOTTE/DOUGLAS INTL (CLT)

RNP APCH.

- ▼** Circling NA at night. Simultaneous approach authorized. LNAV procedure NA during simultaneous operations. Use of FD or AP required during simultaneous operations.
- ▲** Rwy 18L helicopter visibility reduction below RVR 4000 NA. For uncompensated Baro-VNAV systems, LNAV/VNAV NA below -11°C or above 54°C.

**MISSED APPROACH:** Climb to 1300 then climbing left turn to 4000 direct LOC and hold.

D-ATIS	CHARLOTTE APP CON	CHARLOTTE TOWER	GND CON
<b>121.15</b>	<b>128.325</b> (001°-119°) <b>120.05</b> (120°-295°) <b>134.75</b> (296°-360°)	<b>118.1</b> <b>257.8</b> (Rwys 18L-36R) <b>126.4</b> <b>257.8</b> (Rwy 18C-36C) <b>133.35</b> <b>257.8</b> (Rwy 18R-36L)	<b>121.8 348.6</b> (W) <b>121.9 348.6</b> (E)



SE-2, 16 APR 2026 to 14 MAY 2026

SE-2, 16 APR 2026 to 14 MAY 2026

VGSI and RNAV glidepath not coincident (VGSI Angle 3.00/TCH 76).

CAVVI	SNAKK	GILGE	QUWED	EGUUL	ZIMOG	RWY 18L
6000	5000	4000	3000	2400	2400	930
GP 3.00° TCH 56						
	3.2 NM	3.2 NM	3.2 NM	1.9 NM	2.4 NM	1.5 NM
	A		B		C	
LPV DA	1002/40		254 (300-¾)			
LNAV/VNAV DA	1216-1⅜		468 (500-1⅝)			
LNAV MDA	1180/55	432 (500-1)	1180-1¼		432 (500-1¼)	
CIRCLING	1380-1	632 (700-1)	1500-2¼		1500-2½	
			752 (800-2¼)		752 (800-2½)	

