

WAAS CH <b>82415</b> <b>W18D</b>	APP CRS <b>183°</b>	Rwy Ldg <b>9000</b> TDZE <b>744</b> Apt Elev <b>748</b>
--	------------------------	---

# RNAV (GPS) Y RWY 18R

CHARLOTTE/DOUGLAS INTL (CLT)

RNP APCH

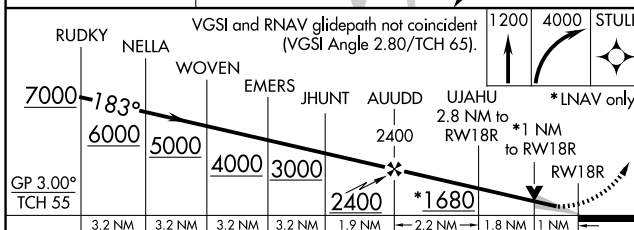
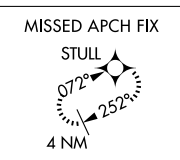
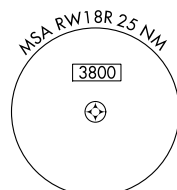
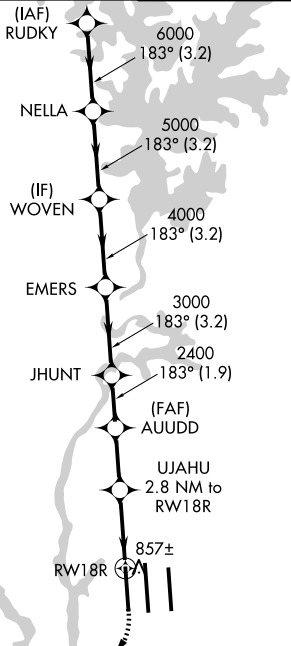
**⚠** Circling NA at night. Simultaneous approach authorized. LNAV procedure NA during simultaneous operations. Use of FD or AP providing RNAV track guidance required during simultaneous operations. For uncompensated Baro-VNAV systems, LNAV/VNAV NA below -11°C or above 54°C. For inop ALS, increase LNAV/VNAV all Cats visibility to RVR 4500. For inop ALS, increase LNAV Cat C/D visibility to RVR 5500.

ALSF-2



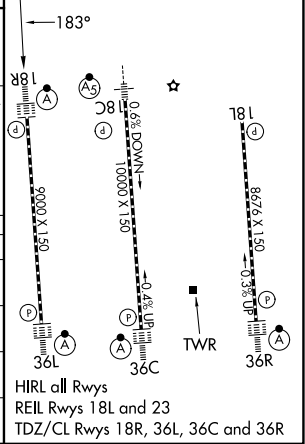
MISSED APPROACH: Climb to 1200 then climbing right turn to 4000 direct STULL and hold, continue climb-in-hold to 4000.

D-ATIS	CHARLOTTE APP CON		CHARLOTTE TOWER		GND CON	
<b>121.15</b>	<b>128.325</b> (001°-119°)	<b>257.2</b> (180°-359°)	<b>118.1</b> (Rwys 18L-36R)	<b>257.8</b> (Rwy 18C-36C)	<b>121.8</b> (W)	<b>348.6</b> (E)
	<b>120.05</b> (120°-295°)	<b>307.8</b> (360°-179°)	<b>126.4</b> (Rwy 18C-36C)	<b>257.8</b> (Rwy 18R-36L)	<b>121.9</b> (W)	<b>348.6</b> (E)
	<b>134.75</b> (296°-360°)		<b>133.35</b> (Rwy 18R-36L)			



ELEV 748	<b>D</b>	TDZE 744
----------	----------	----------

CATEGORY	A	B	C	D
LPV DA	944/18		200 (200-½)	
LNAV/VNAV DA	1018/24		274 (300-½)	
LNAV MDA	1120/24 376 (400-½)		1120/40 376 (400-¾)	
CIRCLING	1380-1 632 (700-1)		1500-2¼ 752 (800-2¼) 1500-2½ 752 (800-2½)	



HIRL all Rwys  
REIL Rws 18L and 23  
TDZ/CL Rws 18R, 36L, 36C and 36R

SE-2, 16 APR 2026 to 14 MAY 2026

SE-2, 16 APR 2026 to 14 MAY 2026