

WAAS CH 86200 W36B	APP CRS 003°	Rwy Ldg 10000 TDZE 707 Apt Elev 748
--	------------------------	--

RNAV (GPS) Y RWY 36C

CHARLOTTE/DOUGLAS INTL (CLT)

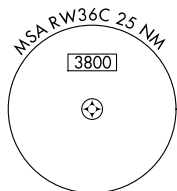
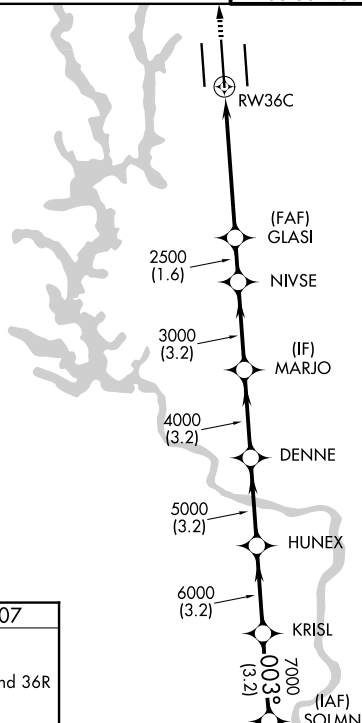
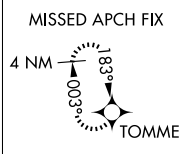
RNP APCH.

⚠ Circling NA at night. Simultaneous approach authorized. Use of FD or AP required during simultaneous operations. For uncompensated Baro-VNAV systems, LNAV/VNAV NA below -11°C or above 54°C. LNAV procedure NA during simultaneous operations.



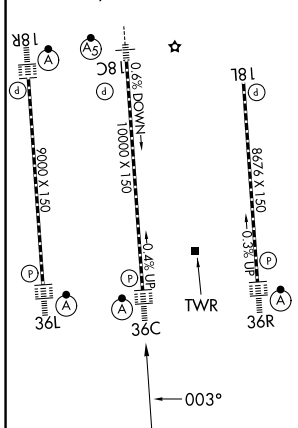
MISSED APPROACH:
Climb to 3000 direct
TOMME and hold.

D-ATIS	CHARLOTTE APP CON		CHARLOTTE TOWER		GND CON
121.15	128.325 (001°-119°)	257.2 (180°-359°)	118.1 257.8 (Rwys 18L-36R)	126.4 257.8 (Rwy 18C-36C)	121.8 348.6 (W)
	120.05 (120°-295°)	307.8 (360°-179°)	133.35 257.8 (Rwy 18R-36L)		121.9 348.6 (E)
	134.75 (296°-360°)				



ELEV 748	D	TDZE 707
----------	----------	----------

HIRL all Rwys
REIL Rwys 18L and 23
TDZ/CL Rwys 18R, 36L, 36C and 36R



3000	TOMME	VGSi and RNAV glidepath not coincident (VGSi Angle 3.00/TCH 72).					8000	
		GLASI	NIVSE	MARJO	DENNE	HUNEX	KRISL	SOLMN
		2500	3000	4000	5000	6000	7000	8000
		1.7	3.7 NM	1.6 NM	3.2 NM	3.2 NM	3.2 NM	3.2 NM
CATEGORY	A	B		C		D		
LPV DA	907/18 200 (200-1/2)							
LNAV/VNAV DA	1229-1 3/8 522 (500-1 3/8)							
LNAV MDA	1320/40	613 (600-3/4)	1320-1 3/8		613 (600-1 3/8)			
CIRCLING	1380-1	632 (700-1)	1500-2 1/4 752 (800-2 1/4)		1500-2 1/2 752 (800-2 1/2)			

SE-2, 16 APR 2026 to 14 MAY 2026

SE-2, 16 APR 2026 to 14 MAY 2026