

WAAS CH 56515 W36A	APP CRS 003°	Rwy Ldg TDZE Apt Elev	9000 744 748
--	------------------------	-----------------------------	---

RNAV (GPS) Y RWY 36L

CHARLOTTE/DOUGLAS INTL (CLT)

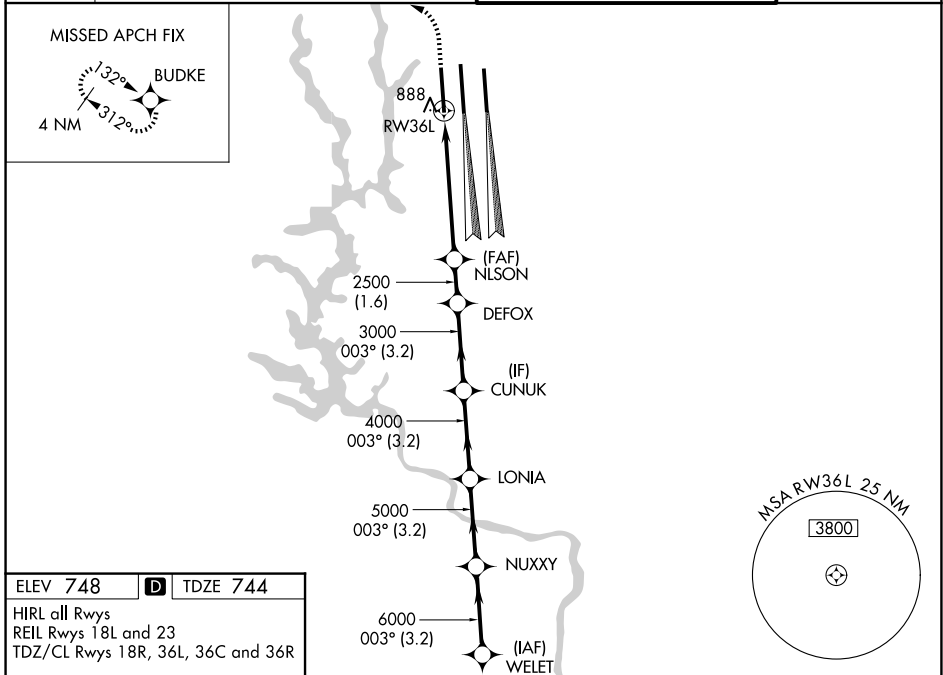
RADAR required for procedure entry. RNP APCH.

⚠ Circling NA at night. Simultaneous approach authorized. LNAV procedure NA during simultaneous operations. Use of FD or AP required during simultaneous operations. For inop ALS, increase LNAV/VNAV all Cats visibility to RVR 4500 and increase LNAV Cats C/D visibility to RVR 6000. For uncompensated Baro-VNAV systems, LNAV/VNAV NA below -10°C or above 54°C.

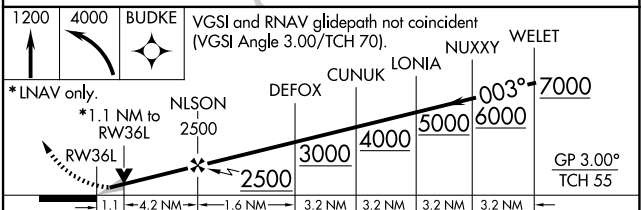
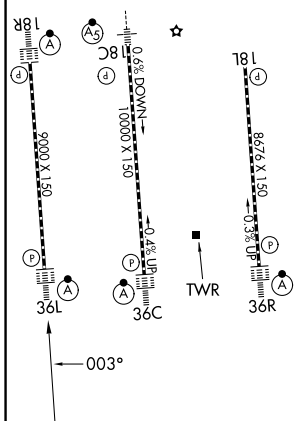
ALS-F-2

MISSED APPROACH: Climb to 1200 then climbing left turn to 4000 direct BUDKE and hold.

D-ATIS	CHARLOTTE APP CON		CHARLOTTE TOWER		GND CON
	128.325 (001°-119°)	257.2 (180°-359°)	118.1 257.8 (Rwys 18L-36R)		121.8 348.6 (W)
	121.15 120.05 (120°-295°)	307.8 (360°-179°)	126.4 257.8 (Rwy 18C-36C)		121.9 348.6 (E)
	134.75 (296°-360°)		133.35 257.8 (Rwy 18R-36L)		



ELEV 748	D	TDZE 744
HIRL all Rwys		
REIL Rwys 18L and 23		
TDZ/CL Rwys 18R, 36L, 36C and 36R		



CATEGORY	A	B	C	D
LPV DA	944/18		200 (200-½)	
LNAV/VNAV DA	1049/24		305 (400-½)	
LNAV MDA	1140/24	396 (400-½)	1140/35	396 (400-¾)
CIRCLING	1380-1	632 (700-1)	1500-2¼ 752 (800-2¼)	1500-2½ 752 (800-2½)

SE-2, 16 APR 2026 to 14 MAY 2026

SE-2, 16 APR 2026 to 14 MAY 2026