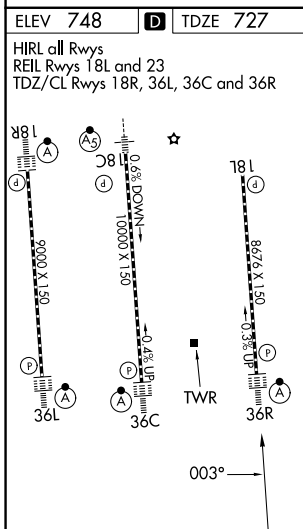
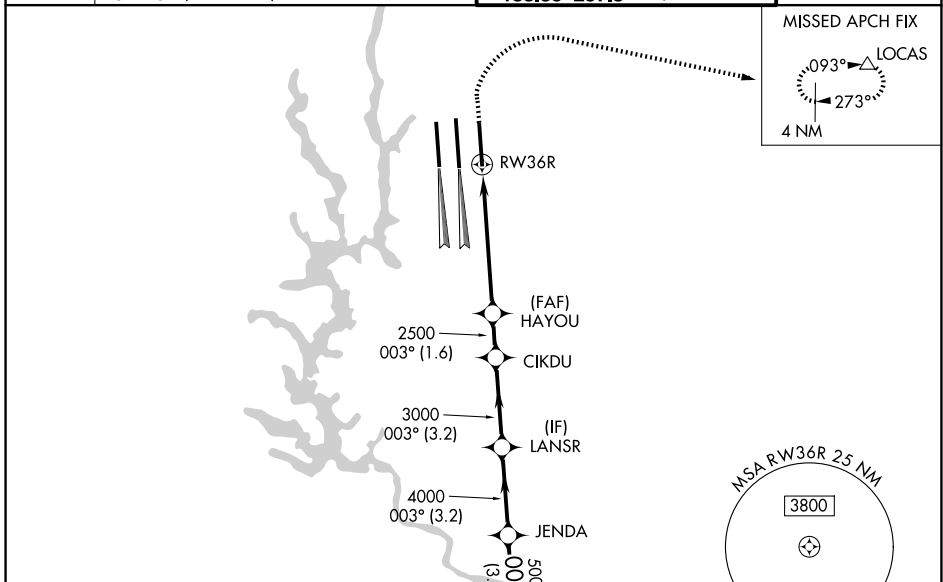


WAAS CH 90100 W36D	APP CRS 003°	Rwy Ldg TDZE 727 Apt Elev 748
--	------------------------	---

RNAV (GPS) Y RWY 36R

CHARLOTTE/DOUGLAS INTL (CLT)

RNP APCH.		ALSF-2 		MISSED APPROACH: Climb to 1320 then climbing right turn to 4000 direct LOCAS and hold.
<p>▽ Circling NA at night. For uncompensated Baro-VNAV systems, LNAV/VNAV NA below -11°C or above 54°C. Simultaneous approach authorized. Use of FD or AP required during simultaneous operations. LNAV procedure NA during simultaneous operations. For inop ALSF, increase LNAV/VNAV all Cats visibility to 1½ mile.</p>				
D-ATIS 121.15	CHARLOTTE APP CON		CHARLOTTE TOWER	
	128.325 (001°-119°)	257.2 (180°-359°)	118.1 257.8 (Rwys 18L-36R)	GND CON
	120.05 (120°-295°)	307.8 (360°-179°)	126.4 257.8 (Rwy 18C-36C)	121.8 348.6 (W)
	134.75 (296°-360°)		133.35 257.8 (Rwy 18R-36L)	121.9 348.6 (E)



1320	4000	LOCAS	VGSi and RNAV glidepath not coincident (VGSi Angle 3.00/TCH 74).		HEKAM																		
*LNAV only.																							
<table border="1"> <tr> <td>HEKAM</td> <td>JENDA</td> <td>LANSR</td> <td>CIKDU</td> <td>HAYOU</td> <td>RWY 36R</td> </tr> <tr> <td>6000</td> <td>5000</td> <td>4000</td> <td>3000</td> <td>2500</td> <td>2500</td> </tr> <tr> <td>3.2 NM</td> <td>3.2 NM</td> <td>3.2 NM</td> <td>1.6 NM</td> <td>3.8 NM</td> <td>1.6 NM</td> </tr> </table>						HEKAM	JENDA	LANSR	CIKDU	HAYOU	RWY 36R	6000	5000	4000	3000	2500	2500	3.2 NM	3.2 NM	3.2 NM	1.6 NM	3.8 NM	1.6 NM
HEKAM	JENDA	LANSR	CIKDU	HAYOU	RWY 36R																		
6000	5000	4000	3000	2500	2500																		
3.2 NM	3.2 NM	3.2 NM	1.6 NM	3.8 NM	1.6 NM																		
GP 3.00°	TCH 55																						
CATEGORY	A	B	C	D																			
LPV DA	927/18		200 (200-½)																				
LNAV/VNAV DA	1229-1¼		502 (500-1¼)																				
LNAV MDA	1320/24	593 (600-½)	1320-1¼	593 (600-1¼)																			
CIRCLING	1380-1	632 (700-1)	1500-2¼	752 (800-2¼)																			

SE-2, 16 APR 2026 to 14 MAY 2026

SE-2, 16 APR 2026 to 14 MAY 2026