

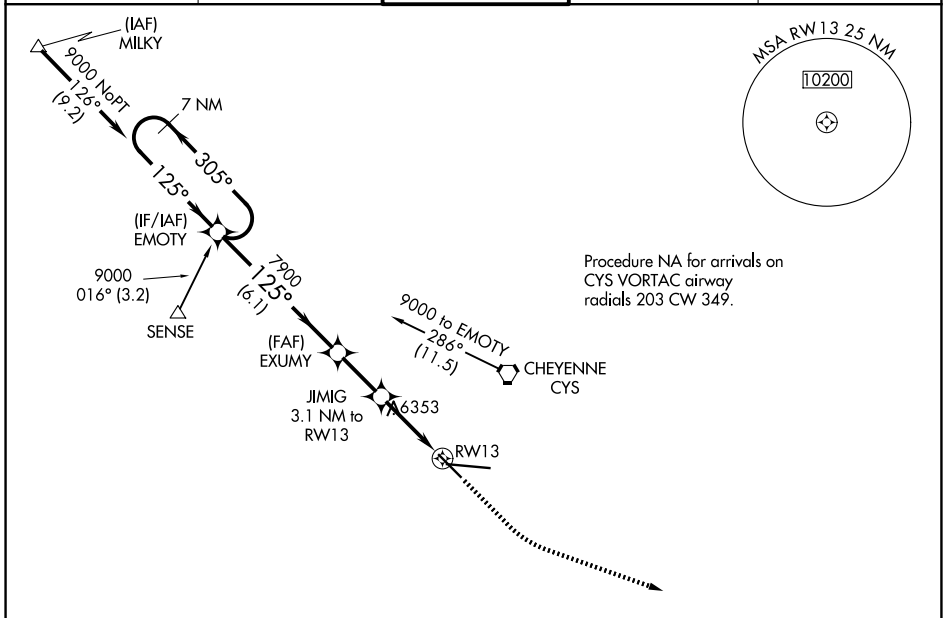
WAAS CH 56609 W13A	APP CRS 125°	Rwy Ldg 4830 TDZE 6155 Apt Elev 6160
--	------------------------	--

RNAV (GPS) RWY 13

CHEYENNE RGNL/JERRY OLSON FLD (CYS)

RNP APCH.	<p>▼ For uncompensated Baro-VNAV systems, LNAV/VNAV NA below -24°C or above 45°C. Rwy 13 helicopter visibility reduction below 3/4 SM NA.</p> <p>▲ ASR/PAR</p>	MISSED APPROACH: Climb to 6600, then climbing left turn to 8500 direct HAMER and hold.
-----------	--	--

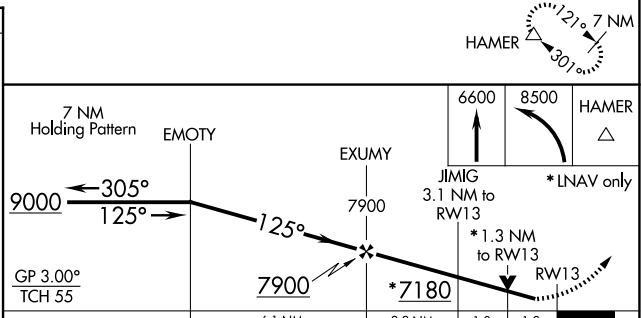
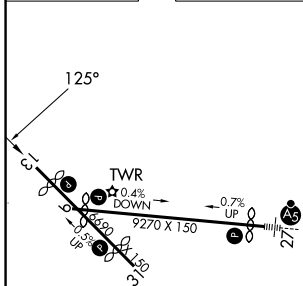
ATIS 134.425 278.3	CHEYENNE APP CON* 124.55 263.075	CHEYENNE TOWER* 118.7(CTAF) 257.8	GND CON 121.9 254.275	UNICOM 122.95
------------------------------	--	---	---------------------------------	-------------------------



NW-1, 16 APR 2026 to 14 MAY 2026

NW-1, 16 APR 2026 to 14 MAY 2026

ELEV 6160	D	TDZE 6155
-----------	----------	-----------



CATEGORY	A	B	C	D
LPV DA		6405-3/4	250 (300-3/4)	
LNAV/VNAV DA		6419-7/8	264 (300-7/8)	
LNAV MDA	6620-1	465 (500-1)	6620-1 3/8	465 (500-1 3/8)
CIRCLING	6640-1	480 (500-1)	6900-2 740 (800-2)	6920-2 1/2 760 (800-2 1/2)

REIL Rwy 9, 13 and 31
HIRL Rwy 9-27
MIRL Rwy 13-31