

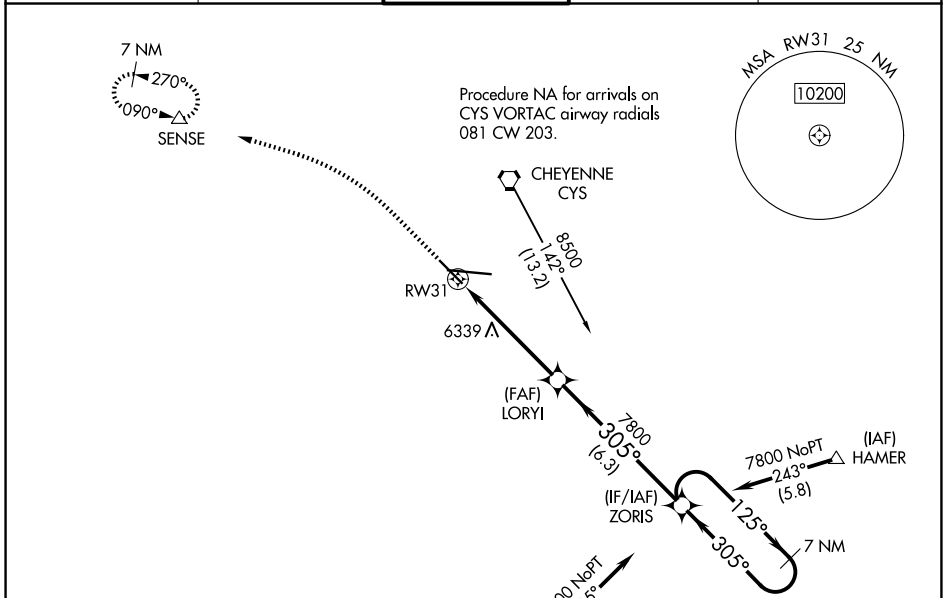
WAAS CH <b>99609</b> <b>W31A</b>	APP CRS <b>305°</b>	Rwy Ldg TDZE Apt Elev	<b>4880</b> <b>6147</b> <b>6160</b>
--	------------------------	-----------------------------	---

# RNAV (GPS) RWY 31

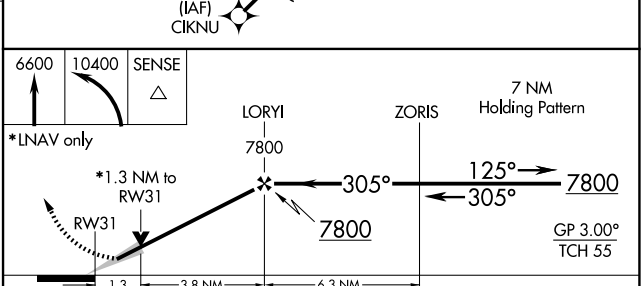
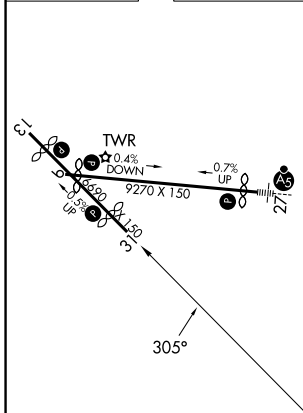
CHEYENNE RGNL/JERRY OLSON FLD (CYS)

RNP APCH.	MISSED APPROACH: Climb to 6600, then climbing left turn to 10400 direct SENSE and hold, continue climb-in-hold to 10400.
<b>T</b> For uncompensated Baro-VNAV systems, LNAV/VNAV NA below -24°C or above 45°C.	
ASR/PAR	

ATIS <b>134.425 278.3</b>	CHEYENNE APP CON* <b>124.55 263.075</b>	CHEYENNE TOWER* <b>118.7(CTAF) 257.8</b>	GND CON <b>121.9 254.275</b>	UNICOM <b>122.95</b>
------------------------------	--	---	---------------------------------	-------------------------



ELEV 6160	<b>D</b>	TDZE 6147
-----------	----------	-----------



CATEGORY	A	B	C	D
LPV DA		6397- <sup>3</sup> / <sub>4</sub>	250 (300- <sup>3</sup> / <sub>4</sub> )	
LNAV/VNAV DA		6458- <sup>7</sup> / <sub>8</sub>	311 (300- <sup>7</sup> / <sub>8</sub> )	
LNAV MDA	6600-1	453 (500-1)	6600-1 <sup>3</sup> / <sub>8</sub>	453 (500-1 <sup>3</sup> / <sub>8</sub> )
CIRCLING	6640-1	480 (500-1)	6900-2 740 (800-2)	6920-2 <sup>1</sup> / <sub>2</sub> 760 (800-2 <sup>1</sup> / <sub>2</sub> )

REIL Rwy 9, 13 and 31  
HIRL Rwy 9-27  
MIRL Rwy 13-31

NW-1, 16 APR 2026 to 14 MAY 2026

NW-1, 16 APR 2026 to 14 MAY 2026