

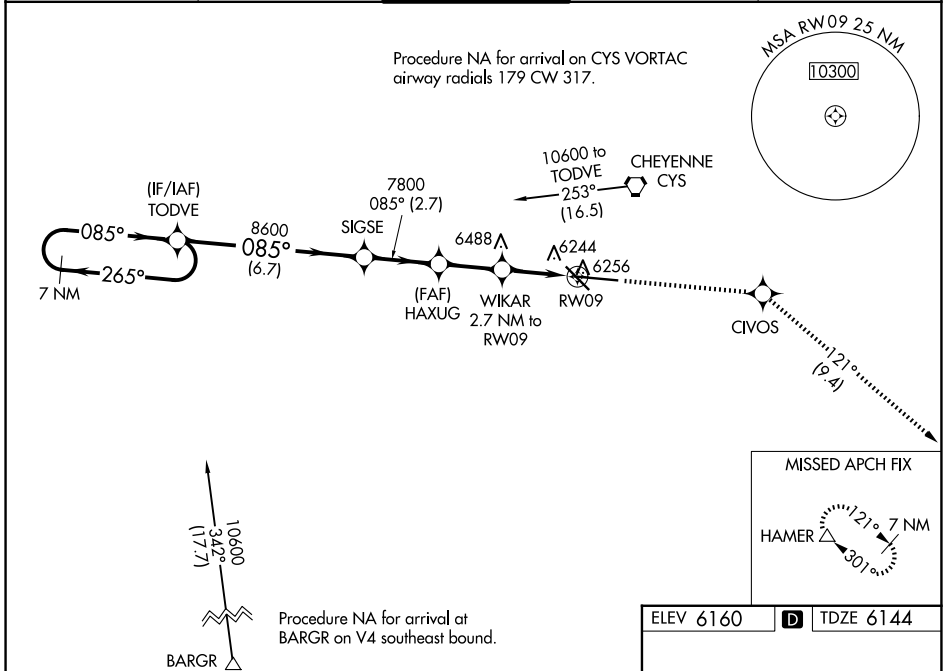
WAAS CH 73009 W09A	APP CRS 085°	Rwy Ldg TDZE 6144 Apt Elev 6160	7985
--	------------------------	---	-------------

RNAV (GPS) RWY 9
CHEYENNE RGNL/JERRY OLSON FLD (CYS)

⚠ For uncompensated Baro-VNAV systems, LNAV/VNAV NA below -27°C (-16°F) or above 36°C (96°F). DME/DME RNP-0.3 NA. Rwy 9 helicopter visibility reduction below 3/4 SM NA.

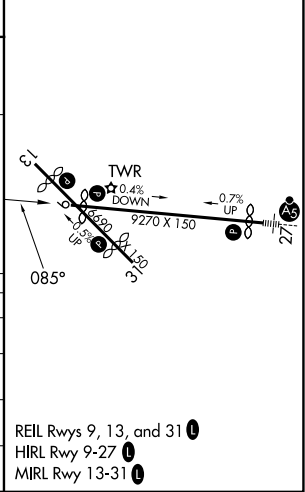
MISSED APPROACH: Climb to 8500 direct CIVOS and on track 121° to HAMER and hold.

ATIS 134.425 278.3	CHEYENNE APP CON* 124.55 263.075	CHEYENNE TOWER* 118.7(CTAF) 0 257.8	GND CON 121.9 254.275	UNICOM 122.95
------------------------------	--	--	---------------------------------	-------------------------



ELEV 6160	D	TDZE 6144
-----------	----------	-----------

7 NM Holding Pattern	TODVE	SIGSE	HAXUG	WIKAR 2.7 NM to RW09	*RNAV only	8500 CIVOS	tr 121°	HAMER
GP 3.00° TCH 50	10600 ← 265°	8600 ← 085°	7800	*7060	*1.1 NM to RW09			
CATEGORY	A	B	C	D				
LPV DA		6473-1¼	329 (400-1¼)					
LNAV/VNAV DA		6543-1½	399 (400-1½)					
LNAV MDA		6540-1	396 (400-1)		6540-1¼	396 (400-1¼)		
CIRCLING	6640-1	480 (500-1)		6900-2	740 (800-2)	6940-2½	780 (800-2½)	



REIL Rwy 9, 13, and 31
HIREL Rwy 9-27
MIREL Rwy 13-31

NW-1, 16 APR 2026 to 14 MAY 2026

NW-1, 16 APR 2026 to 14 MAY 2026