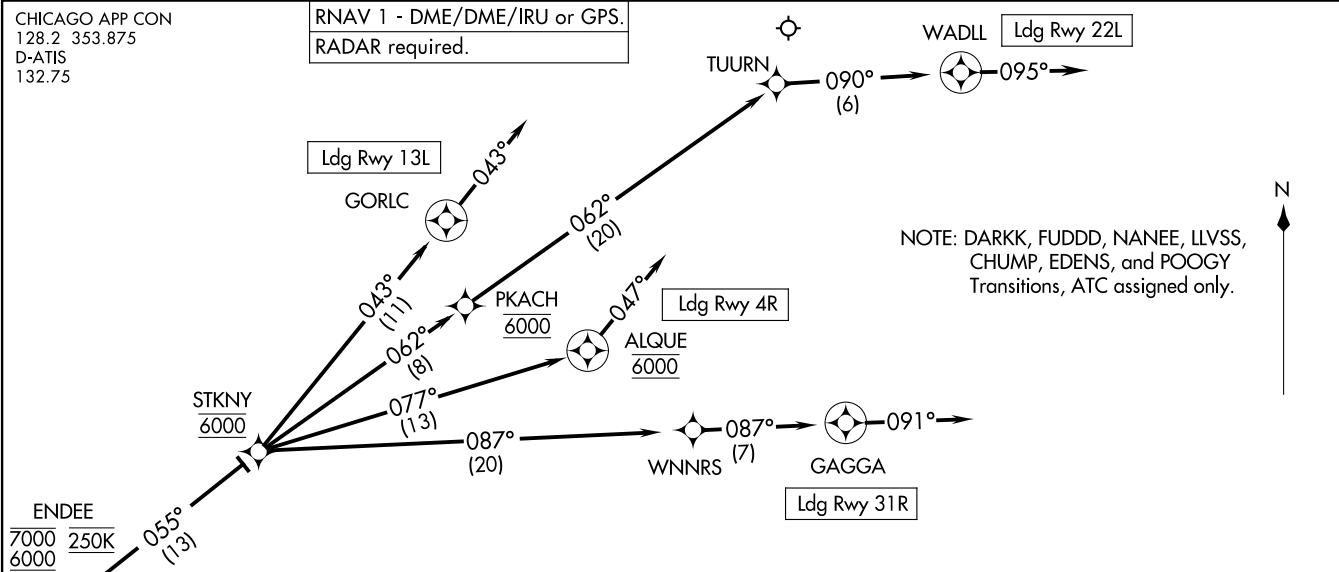


ENDEE EIGHT ARRIVAL (RNAV) Arrival Routes
 (ENDEE, ENDEE8) 07 AUG 25
 CHICAGO, ILLINOIS
 CHICAGO MIDWAY INTL (MDW)

CHICAGO APP CON
 128.2 353.875
 D-ATIS
 132.75

RNAV 1 - DME/DME/IRU or GPS.
 RADAR required.



NOTE: DARKK, FUDDD, NANEE, ILVSS, CHUMP, EDENS, and POOGY Transitions, ATC assigned only.

ARRIVAL ROUTE DESCRIPTION

From ENDEE on track 055° to cross STKNY at 6000.

LANDING RUNWAY 4R: From STKNY on track 077° to cross ALQUE at 6000, then on track 047°. Expect ILS or LOC RWY 4R approach or RADAR vectors to final approach course.

LANDING RUNWAY 13L: From STKNY on track 043° to GORLC, then on track 043°. Expect RADAR vectors to final approach course.

LANDING RUNWAY 22L: From STKNY on track 062° to cross PKACH at 6000, then on track 062° to TUURN, then on track 090° to WADLL, then on track 095°. Expect RADAR vectors to final approach course.

LANDING RUNWAY 31R: From STKNY on track 087° to WNNRS, then on track 087° to GAGGA, then on track 091°. Expect RADAR vectors to final approach course.

NOTE: Chart not to scale.

(ENDEE, ENDEE8) 25219
 ENDEE EIGHT ARRIVAL (RNAV) Arrival Routes
 AL-81 (FAA)
 CHICAGO MIDWAY INTL (MDW)
 CHICAGO, ILLINOIS