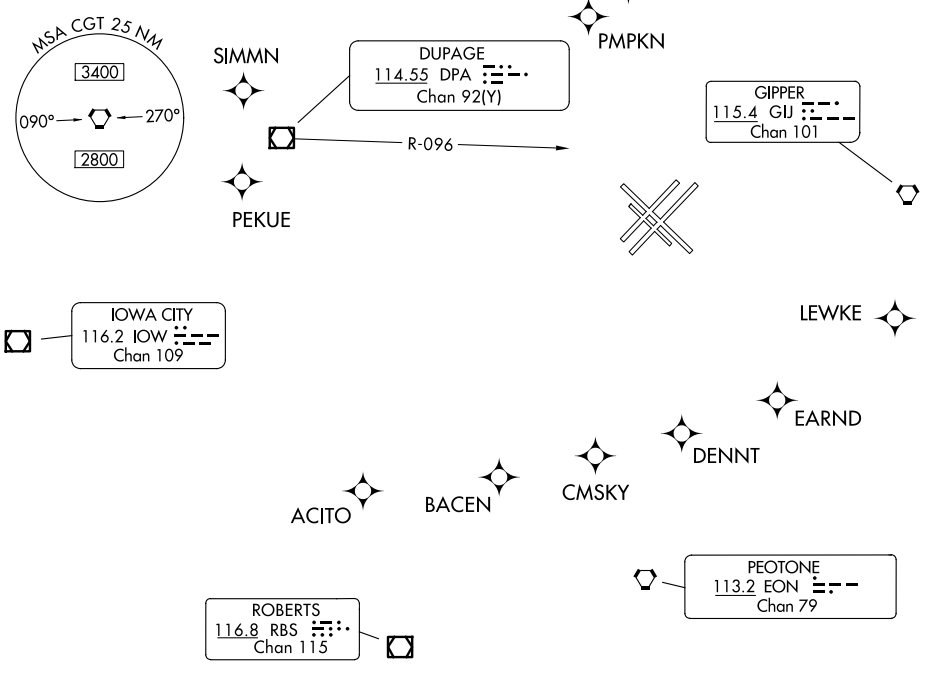


CHICAGO DEP CON  
128.2 353.875  
D-ATIS 132.75  
CLNC DEL  
124.625  
CPDLC  
GND CON  
118.075  
MIDWAY TOWER  
135.2 269.125

RNAV 1 - GPS from ACITO, BACEN, CMSKY, DENNT, EARND, LEWKE, PEKUE, PMPKN, RAYNR.  
RADAR required.

**TOP ALTITUDE:  
3000**



NOTE: All Turbo-Jet departures, in all directions, accelerate to 250K immediately upon entering or outside the lateral confines of ORD Class B airspace, then maintain 250K until advised by ATC.

**TAKEOFF MINIMUMS:**  
Rwy 4L/R, 13L, 22L/R, 31R: Standard.

NOTE: Chart not to scale.

**DEPARTURE ROUTE DESCRIPTION**

**ALL AIRCRAFT:**  
**TAKEOFF RUNWAYS 4L/R, 13L, 22L/R, 31R:** Climb on assigned heading for RADAR vectors to filed/assigned route or depicted fix. Maintain 3000, expect filed altitude ten minutes after departure.

**ALL AIRCRAFT:** Complete initially assigned turn within 4 NM of KMDW airport.

EC-3, 16 APR 2026 to 14 MAY 2026

EC-3, 16 APR 2026 to 14 MAY 2026