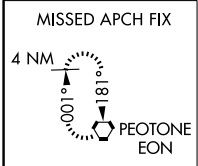
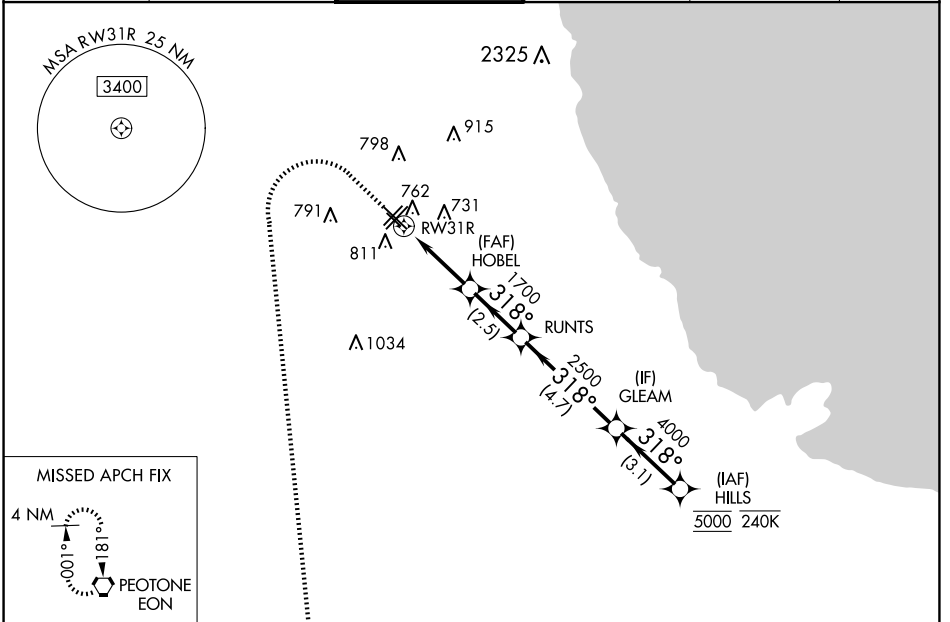


WAAS CH 61147 W31A	APP CRS 318°	Rwy Ldg TDZE 613 Apt Elev 620
--	------------------------	---

RNAV (GPS) Z RWY 31R

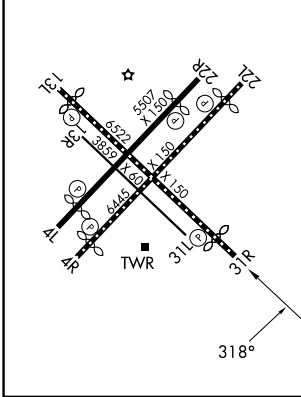
CHICAGO MIDWAY INTL (MDW)

RNP APCH - GPS.				MISSED APPROACH: Climb to 1100 then climbing left turn to 2600 direct EON VORTAC and hold.	
<p>▼ For uncompensated Baro-VNAV systems, LNAV/VNAV NA below -20°C or above 54°C. ▲ Rwy 31R helicopter visibility reduction below RVR 4000 NA.</p>					
D-ATIS 132.75	CHICAGO APP CON 128.2 353.875	MIDWAY TOWER 135.2 269.125	GND CON 118.075	CLNC DEL 124.625	CPDLC



ELEV 620	D	TDZE 613
----------	----------	----------

REIL Rws 4R, 22L and 31R
 RLLS Rws 13L and 31R
 HIRL Rws 4R-22L and 13L-31R
 MIRL Rws 4L-22R and 13R-31L



1100	2600	EON	VGSI and RNAV glidepath not coincident (VGSI Angle 3.00/TCH 63).			
		HILLS	GLEAM			
		RUNTS	318°		5000	
		HOBEL	4000			
		RW31R	1700			
			2500			
			1700			
			4.7 NM		3.1 NM	
			2.5 NM			
			2.2 NM			
			1.1 NM			
			1.1 NM to RW31R			
			1700			
			2500			
			4000			
			5000			
			GP 3.00°		TCH 48	
CATEGORY	A	B	C	D		
LPV DA	863/40		250 (300-¾)			
LNAV/VNAV DA	953/50		340 (400-1)			
LNAV MDA	1020/55		407 (400-1)		1020/60 407 (400-1¼)	
C CIRCLING	1120-1		500 (500-1)		1340-2 720 (800-2)	
					1340-2¼ 720 (800-2¼)	

EC-3, 16 APR 2026 to 14 MAY 2026

EC-3, 16 APR 2026 to 14 MAY 2026