

WAAS CH 65614 W04A	APP CRS 047°	Rwy Ldg 5927 TDZE 619 Apt Elev 620
--	------------------------	---

RNAV (GPS) Z RWY 4R

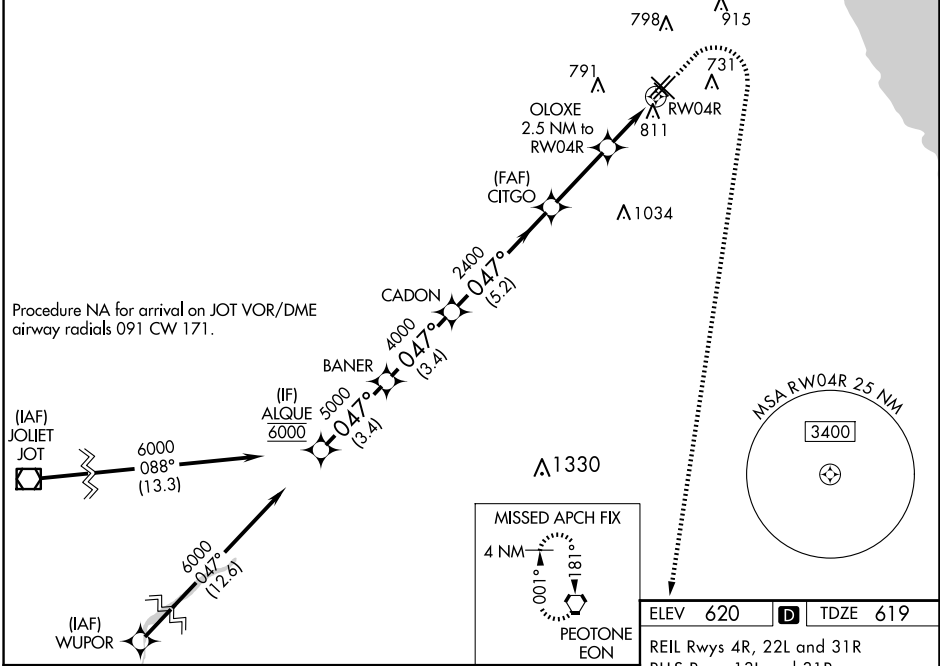
CHICAGO MIDWAY INTL (MDW)

RNP APCH - GPS

▼ Rwy 4R helicopter visibility reduction below RVR 4000 NA.
▲ For uncompensated Baro-VNAV systems, LNAV/VNAV NA below -20°C or above 54°C.

MISSED APPROACH: Climb to 1100 then climbing right turn to 2600 direct EON VORTAC and hold.

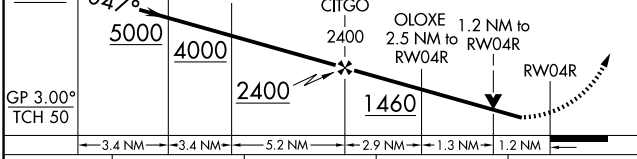
D-ATIS 132.75	CHICAGO APP CON 128.2 353.875	MIDWAY TOWER 135.2 269.125	GND CON 118.075	CLNC DEL 124.625	CPDLC
-------------------------	---	--------------------------------------	---------------------------	----------------------------	-------



VGSI and RNAV glidepath not coincident (VGSI Angle 3.00/TCH 66).

ALQUE 6000 047° → BANER 5000 047° → CADON 4000 047° → CITGO 2400 047° → OLOXE 1.2 NM to RW04R → RW04R

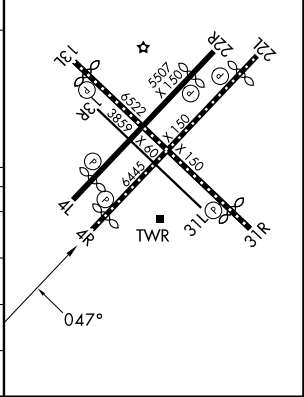
GP 3.00° TCH 50



CATEGORY	A	B	C	D
LPV DA		869/40	250 (300-¾)	
LNAV/VNAV DA		1097-1⅜	478 (500-1⅜)	
LNAV MDA	1080/55	461 (500-1)	1080-1⅜	461 (500-1⅜)
C CIRCLING	1120-1	500 (500-1)	1340-2 720 (800-2)	1340-2¼ 720 (800-2¼)

ELEV 620 **D** TDZE 619

REIL Rwy 4R, 22L and 31R
 RLLS Rwy 13L and 31R
 HIRL Rwy 4R-22L and 13L-31R
 MIRL Rwy 4L-22R and 13R-31L



EC-3, 16 APR 2026 to 14 MAY 2026

EC-3, 16 APR 2026 to 14 MAY 2026