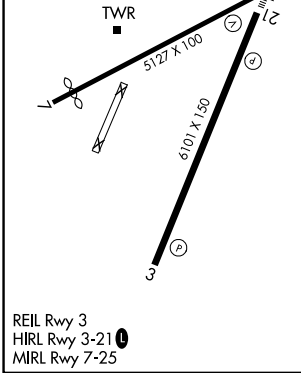
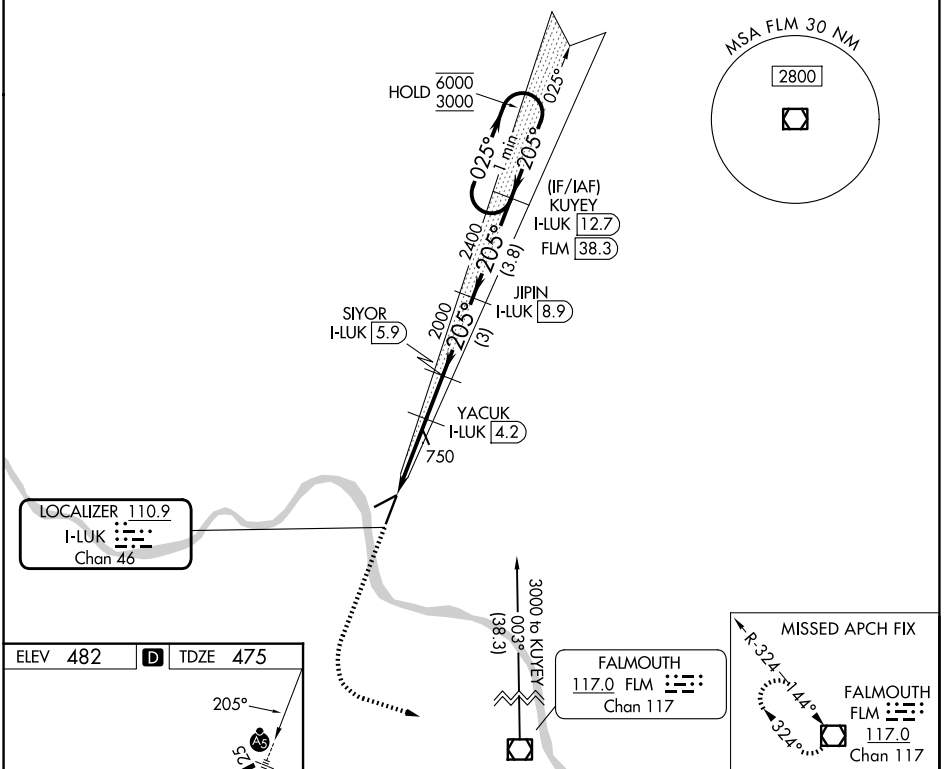


LOC/DME I-LUK <b>110.9</b> Chan 46	APP CRS <b>205°</b>	Rwy Ldg TDZE Apt Elev	<b>6101</b> <b>475</b> <b>482</b>
--	------------------------	-----------------------------	---

# ILS or LOC RWY 21

CINCINNATI MUNI/LUNKEN FLD (LUK)

DME required.		MALSR	MISSED APPROACH: Climb to 2000 then climbing left turn to 3000 direct FLM VOR/DME and hold.	
<p>Rwy 21 helicopter visibility reduction below RVR 4000 NA. Circling Rwy 7 NA at night. Circling NA for Cat D north of Rwy 7-25. Inop table does not apply to S-ILS 21 all Cats and S-LOC 21 Cats A and B.</p>				
ATIS <b>123.6</b>	CINCINNATI APP CON <b>121.0 254.25</b>	LUNKEN TOWER ★ <b>118.7 (CTAF) 257.8</b>	GND CON <b>121.9</b>	UNICOM <b>122.95</b>



ELEV 482	D	TDZE 475		
2000	3000	FLM	KUYEY I-LUK 12.7 One Minute Holding Pattern	
YACUK I-LUK 4.2	SIYOR I-LUK 5.9	JIPIN I-LUK 8.9		
I-LUK 1.2	I-LUK 2.9	2000	2400	6000
1460	2000	205°	205°	3000
1.7 NM	1.3 NM	1.7 NM	3 NM	3.8 NM
CATEGORY	A	B	C	D
S-ILS 21	797/50		322 (400-1)	
S-LOC 21	1060/50	585 (600-1)	1060-1¼	585 (600-1¼)
CIRCLING	1260-1	1360-1¼	1360-2½	1400-3
	778 (800-1)	878 (900-1¼)	878 (900-2½)	918 (1000-3)

EC-2, 16 APR 2026 to 14 MAY 2026

EC-2, 16 APR 2026 to 14 MAY 2026