

BRWNZ FOUR ARRIVAL (RNAV) Transition Routes
 (BRWNZ.BRWNZ4) 22APR21

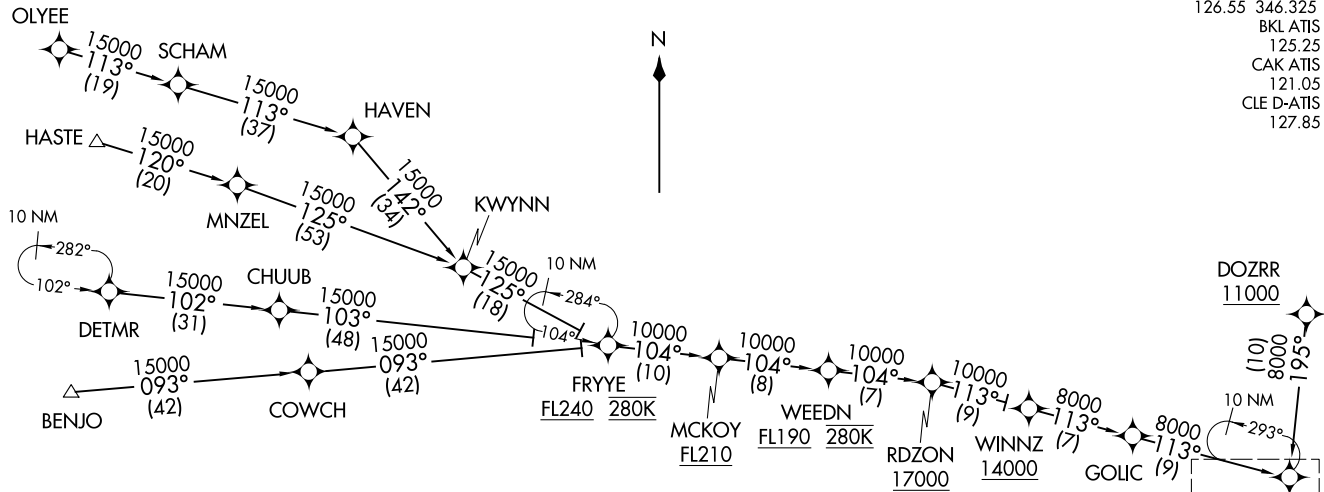
CLEVELAND, OHIO

CLEVELAND APP CON
 126.55 346.325
 BKL ATIS
 125.25
 CAK ATIS
 121.05
 CLE D-ATIS
 127.85

BRWNZ FOUR ARRIVAL (RNAV) Transition Routes
 (BRWNZ.BRWNZ4) 22139

AL-84 (FAA)

CLEVELAND, OHIO



- NOTE: RADAR required.
- NOTE: RNAV 1.
- NOTE: DME/DME/IRU or GPS required.
- NOTE: Jet aircraft expect "descend via" clearance from Cleveland Center.
- NOTE: KCLE LANDING SOUTH: Use Rwy 24R Transition, expect runway assignment from CLEVELAND APP CON no later than 10 NM from BRWNZ.
- NOTE: KCLE LANDING NORTH: Use Rwy 6L Transition, expect runway assignment from CLEVELAND APP CON no later than 10 NM from BRWNZ.
- NOTE: OLYEE TRANSITION: Do not file - to be assigned by ATC.
- NOTE: DOZRR TRANSITION: Except for flights originating in Canada, do not file - to be assigned by ATC.
- NOTE: BENJO TRANSITION: For use by turbojet aircraft only.
- NOTE: WINNZ TRANSITION: For Detroit Metropolitan Area departures only.

- BENJO TRANSITION (BENJO.BRWNZ4)
- DETMR TRANSITION (DETMR.BRWNZ4)
- DOZRR TRANSITION (DOZRR.BRWNZ4)
- FRYYE TRANSITION (FRYYE.BRWNZ4)
- HASTE TRANSITION (HASTE.BRWNZ4)
- OLYEE TRANSITION (OLYEE.BRWNZ4)
- WINNZ TRANSITION (WINNZ.BRWNZ4)

NOTE: Chart not to scale.

(CONTINUED ON FOLLOWING PAGE)

BRWNZ FOUR ARRIVAL (RNAV) Arrival Routes
(BRWNZ, BRWNZ4) 22APR21

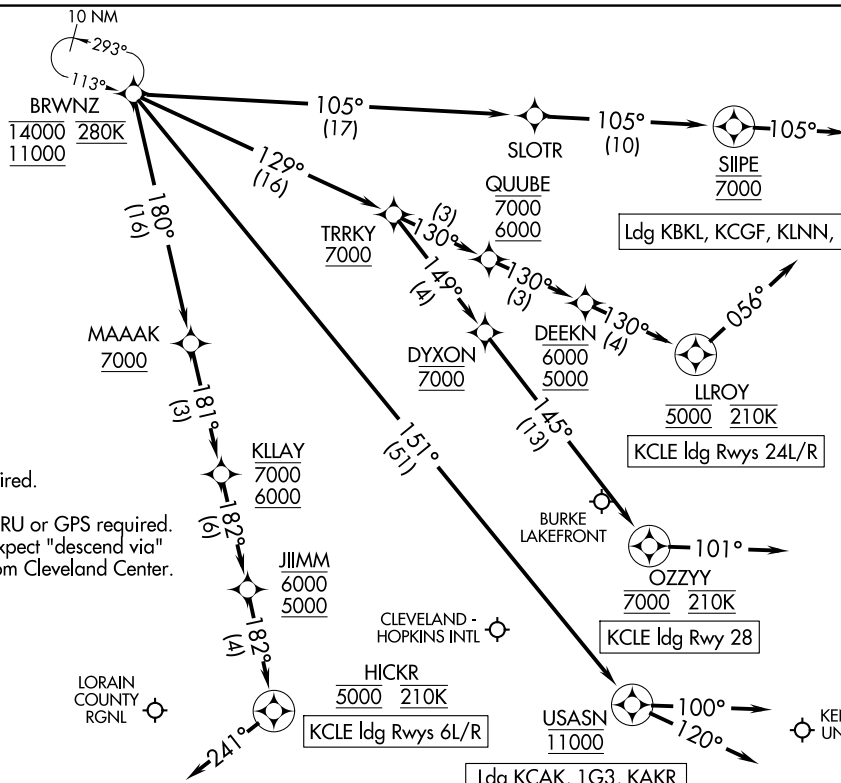
CLEVELAND, OHIO

CLEVELAND APP CON
126.55 346.325
BKL ATIS
125.25
CAK ATIS
121.05
CLE D-ATIS
127.85

(BRWNZ, BRWNZ4) 23110
BRWNZ FOUR ARRIVAL (RNAV) Arrival Routes

AL-84 (FAA)

CLEVELAND, OHIO



NOTE: RADAR required.
 NOTE: RNAV 1.
 NOTE: DME/DME/IRU or GPS required.
 NOTE: Jet aircraft expect "descend via" clearance from Cleveland Center.

NOTE: KCLC LANDING SOUTH: Use Rwy 24R Transition, expect runway assignment from CLEVELAND APP CON no later than 10 NM from BRWNZ.
 NOTE: KCLC LANDING NORTH: Use Rwy 6L Transition, expect runway assignment from CLEVELAND APP CON no later than 10 NM from BRWNZ.

(NARRATIVE ON FOLLOWING PAGE)

NOTE: Chart not to scale.

BRWNZ FOUR ARRIVAL (RNAV)

CLEVELAND, OHIO

ARRIVAL ROUTE DESCRIPTION

LANDING KCLE RUNWAYS 6L/R: From BRWNZ on track 180° to cross MAAAK at or above 7000, then on track 181° to cross KLLAY between 6000 and 7000, then on track 182° to cross JIIMM between 5000 and 6000, then on track 182° to cross HICKR at 5000 and at 210K, then on heading 241° or as assigned by ATC. Expect ILS, RNAV (RNP), or RNAV (GPS) approach from HICKR, or RADAR vectors to final approach course.

LANDING KCLE RUNWAYS 24L/R: From BRWNZ on track 129° to cross TRRKY at or above 7000, then on track 130° to cross QUUBE between 6000 and 7000, then on track 130° to cross DEEKN between 5000 and 6000, then on track 130° to cross LLROY at 5000 and at 210K, then on heading 056° or as assigned by ATC. Expect ILS, RNAV (RNP), or RNAV (GPS) approach from LLROY, or RADAR vectors to final approach course.

LANDING KCLE RUNWAY 28: From BRWNZ on track 129° to cross TRRKY at or above 7000, then on track 149° to cross DYXON at 7000, then on track 145° to cross OZZYY at 7000 and at 210K, then on heading 101° or as assigned by ATC. Expect RADAR vectors to final approach course.

LANDING 1G3/KAKR: From BRWNZ on track 151° to cross USASN at 11000, then on track 100°. Expect RADAR vectors to final approach course.

LANDING KLPR/KLNN/KCGF/KBKL: From BRWNZ on track 105° to SLOTR, then on track 105° to cross SIIPE at 7000, then on track 105°. Expect RADAR vectors to final approach course.

LANDING KCAK: From BRWNZ on track 151° to cross USASN at 11000, then on track 120°. Expect RADAR vectors to final approach course.

EC-2, 16 APR 2026 to 14 MAY 2026

EC-2, 16 APR 2026 to 14 MAY 2026