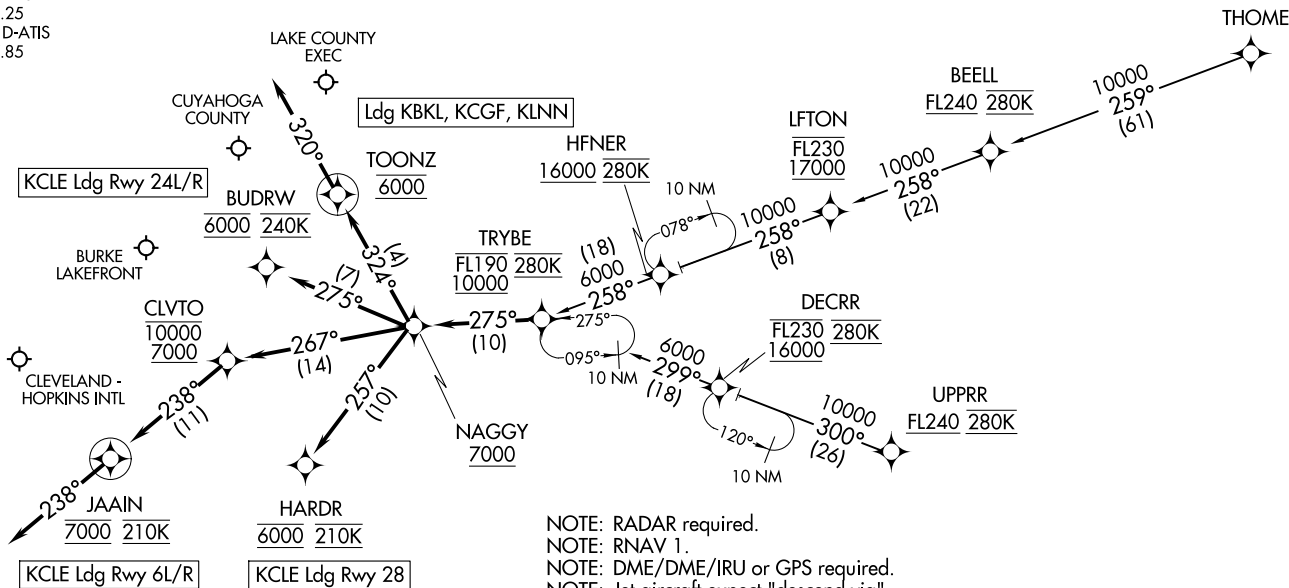


TRYBE FOUR ARRIVAL (RNAV)  
(TRYBE:TRYBE4) 26MAR20

CLEVELAND APP CON  
126.55 346.325  
BKL ATIS  
125.25  
CLE D-ATIS  
127.85



- NOTE: RADAR required.
- NOTE: RNAV 1.
- NOTE: DME/DME/IRU or GPS required.
- NOTE: Jet aircraft expect "descend via" clearance from Cleveland Center.
- NOTE: Jet aircraft descend via MACH number until intercepting 280K. Maintain 280K until slowed by the STAR.
- NOTE: CLE LANDING SOUTH: Use Rwy 24R transition, expect runway assignment from Cleveland APP CON no later than TRYBE.
- NOTE: CLE LANDING NORTH: Use Rwy 6L transition, expect runway assignment from Cleveland APP CON no later than TRYBE.
- NOTE: LFTON Transition: Except for flights originating in Canada, do not file, to be assigned by ATC.



NOTE: Chart not to scale.

(NARRATIVE ON FOLLOWING PAGE)

CLEVELAND, OHIO

CLEVELAND, OHIO

(TRYBE:TRYBE4) 22139  
TRYBE FOUR ARRIVAL (RNAV)

AL-84 (FAA)

# TRYBE FOUR ARRIVAL (RNAV)

CLEVELAND, OHIO

## ARRIVAL ROUTE DESCRIPTION

LFTON TRANSITION (LFTON.TRYBE4)

THOME TRANSITION (THOME.TRYBE4)

UPPRR TRANSITION (UPPRR.TRYBE4)

KCLE: From TRYBE on track 275° to cross NAGGY at or above 7000.

LANDING KCLE RUNWAYS 6R/L: From NAGGY on track 267° to cross CLVTO between 7000 and 10000, then on track 238° to cross JAAIN at 7000 and at 210K, then on heading 238° or as assigned by ATC. Expect RNAV (RNP) approach from JAAIN or RADAR vectors to final approach course.

LANDING KCLE RUNWAYS 24L/R: From NAGGY on track 275° to cross BUDRW at 6000 and at 240K. Expect ILS, RNAV (RNP), or RNAV (GPS) approach from BUDRW.

LANDING KCLE RUNWAY 28: From NAGGY on track 257° to cross HARDR at 6000 and at 210K. Expect ILS, RNAV (RNP), or RNAV (GPS) approach from HARDR .

LANDING KBKL/KLNN/KCGF: From TRYBE on track 275° to cross NAGGY at or above 7000 then on track 324° to cross TOONZ at 6000, then on track 320°. Expect RADAR vectors to final approach course.

EC-2, 16 APR 2026 to 14 MAY 2026

EC-2, 16 APR 2026 to 14 MAY 2026