

APP CRS	Rwy Ldg	11022
172°	TDZE	6177
	Apt Elev	6187

RNAV (RNP) Z RWY 17R

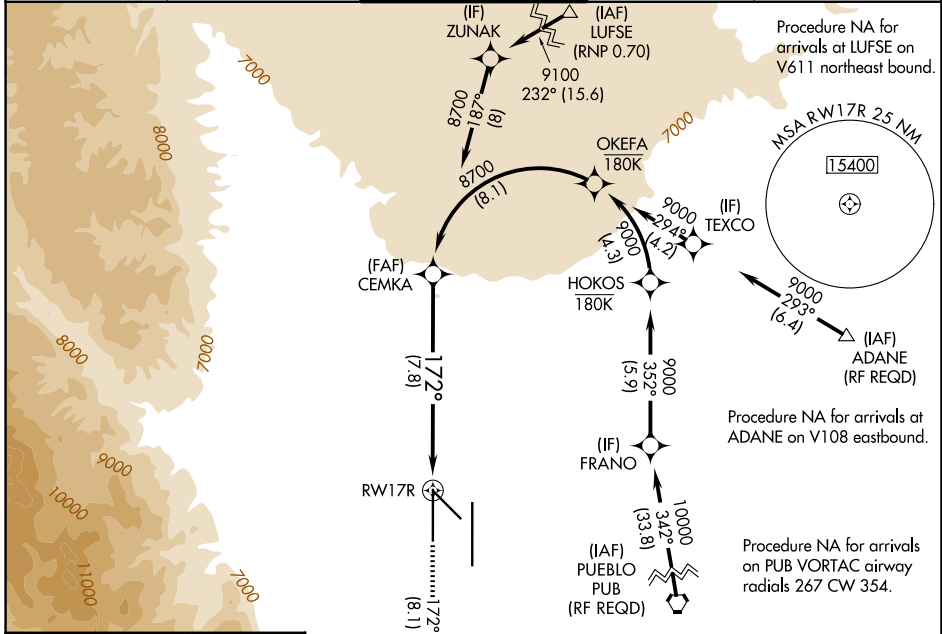
CITY OF COLORADO SPRINGS MUNI (COS)

RNP AR APCH - GPS.

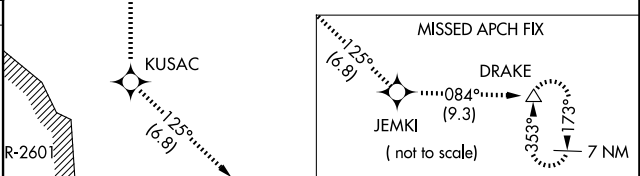
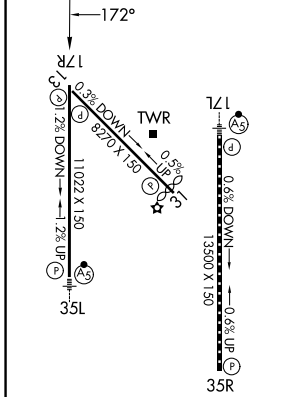
⚠ For uncompensated Baro-VNAV systems, procedure NA below -21°C or above 45°C. Simultaneous approach authorized.

MISSED APPROACH: Climb to 9000 on track 172° to KUSAC and on track 125° to JEMKI and on track 084° to DRAKE and hold.

ATIS 125.0 254.3	SPRINGS APP CON 124.0 257.875	SPRINGS TOWER 119.9 360.6	GND CON 121.7 348.6	CLNC DEL 134.45 363.125
----------------------------	---	-------------------------------------	-------------------------------	-----------------------------------



ELEV 6187	D	TDZE 6177
-----------	----------	-----------



9000	KUSAC	tr 125°	JEMKI	tr 084°	DRAKE	CEMKA
tr 172°						8700
VGSi and RNAV glidepath not coincident (VGSi Angle 3.00/TCH 49).						
RWY 17R						
See planview for multiple IF locations.						
7.8 NM						
GP 3.00°						
TCH 55						

CATEGORY	A	B	C	D
RNP 0.22 DA		6659-1½	482 (500-1½)	
RNP 0.30 DA		6902-2½	725 (800-2½)	

AUTHORIZATION REQUIRED

SW-1, 16 APR 2026 to 14 MAY 2026

SW-1, 16 APR 2026 to 14 MAY 2026