

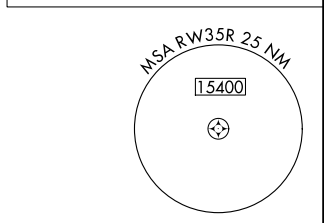
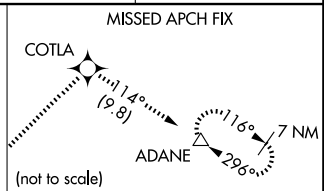
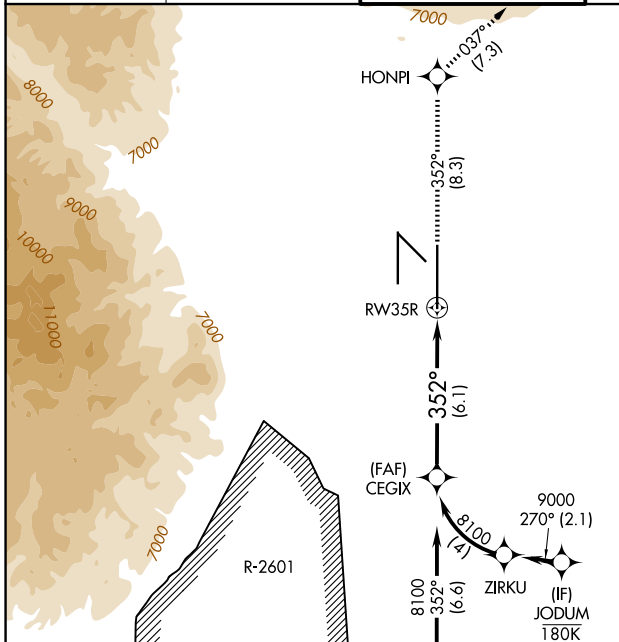
RNAV (RNP) Z RWY 35R

CITY OF COLORADO SPRINGS MUNI (COS)

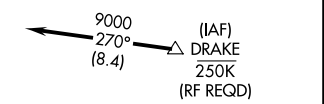
APP CRS	Rwy Ldg	13500
352°	TDZE	6118
	Apt Elev	6187

For uncompensated Baro-VNAV systems, procedure NA below -21°C (-5°F) or above 45°C (113°F). GPS required. MISSED APPROACH: Climb to 9000 on track 352° to HONPI and track 037° to COTLA and track 114° to ADANE and hold.

ATIS 125.0 254.3	SPRINGS APP CON 124.0 257.875	SPRINGS TOWER 119.9 360.6	GND CON 121.7 348.6	CLNC DEL 134.45 363.125
----------------------------	---	-------------------------------------	-------------------------------	-----------------------------------

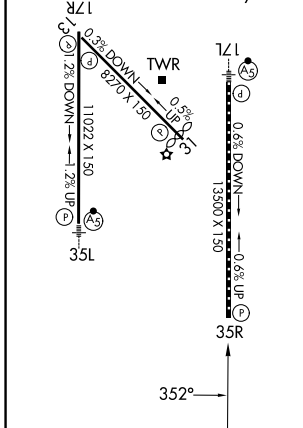


Procedure NA for arrivals at DRAKE on V83 southeast bound and V389 southbound

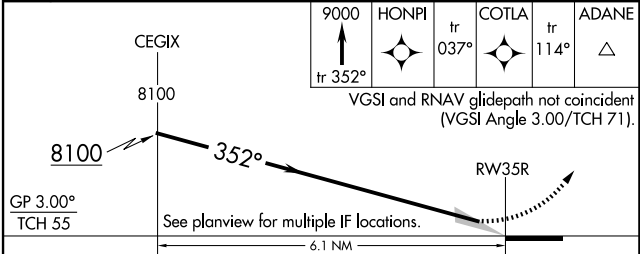


ELEV 6187	D	TDZE 6118
-----------	----------	-----------

HIRL Rwy 17R-35L and 17L-35R
REIL Rwy 13, 17R, 31, and 35R
TDZ/CL Rwy 17L and 35R
MIRL Rwy 13-31



Procedure NA for arrivals at FSHER on V244 eastbound.



CATEGORY	A	B	C	D
RNP 0.30 DA		6461/60	343 (300-1¼)	

AUTHORIZATION REQUIRED

SW-1, 16 APR 2026 to 14 MAY 2026

SW-1, 16 APR 2026 to 14 MAY 2026