

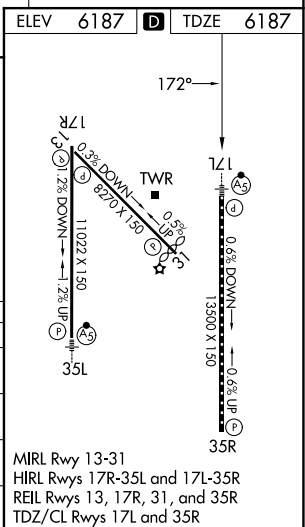
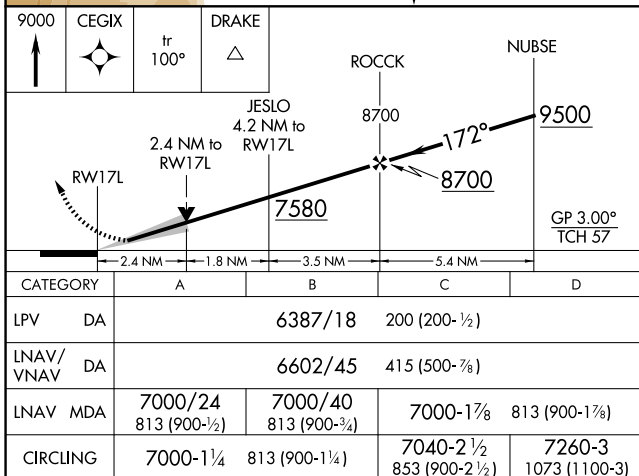
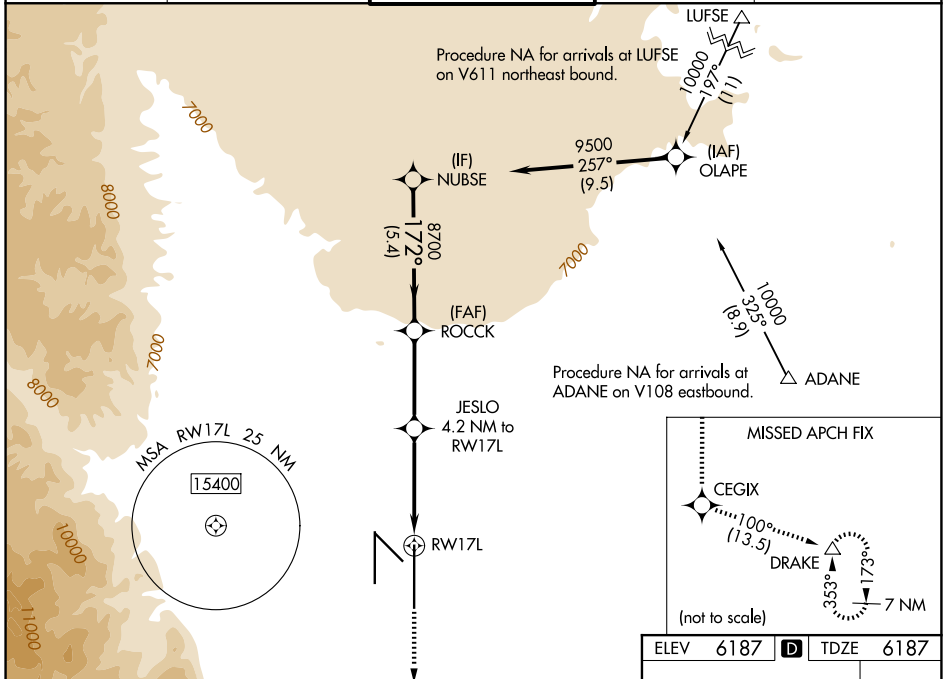
RNAV (GPS) Y RWY 17L

CITY OF COLORADO SPRINGS MUNI (COS)

WAAS CH 69618 W17A	APP CRS 172°	Rwy Ldg TDZE 6187 Apt Elev 6187	13500 6187 6187
--	------------------------	---	--

RNP APCH - GPS.	MALSR 	MISSED APPROACH: Climb to 9000 direct CEGIX and on track 100° to DRAKE and hold.
For uncompensated Baro-VNAV systems, LNAV/VNAV NA below -21°C or above 44°C. For inop MALSR, increase LNAV Cat C/D visibility to 2½ SM.		

ATIS 125.0 254.3	SPRINGS APP CON 124.0 257.875	SPRINGS TOWER 119.9 360.6	GND CON 121.7 348.6	CLNC DEL 134.45 363.125
----------------------------	---	-------------------------------------	-------------------------------	-----------------------------------



SW-1, 16 APR 2026 to 14 MAY 2026

SW-1, 16 APR 2026 to 14 MAY 2026