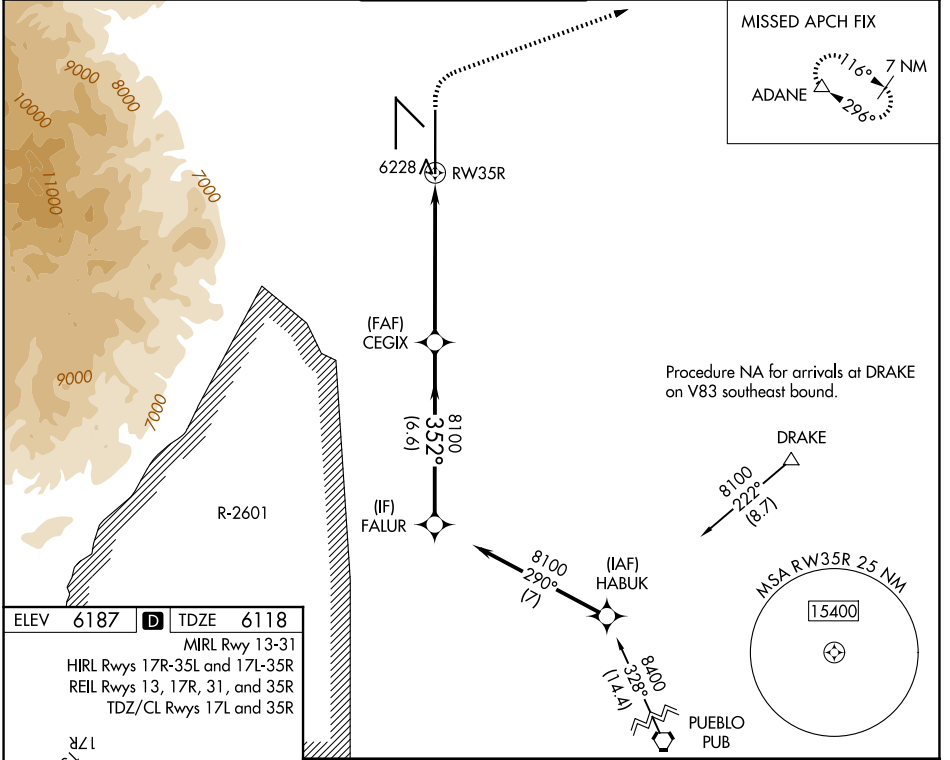


WAAS CH 53602 W35B	APP CRS 352°	Rwy Ldg TDZE Apt Elev	13500 6118 6187
----------------------------------------	------------------------	-----------------------------	--------------------------------------------

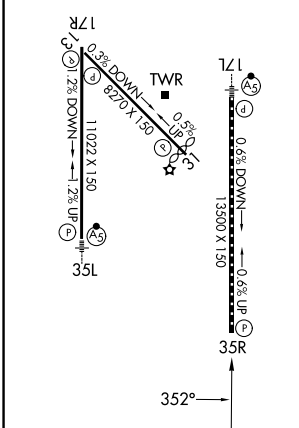
RNAV (GPS) Y RWY 35R

CITY OF COLORADO SPRINGS MUNI (COS)

▽ ▲	For uncompensated Baro-VNAV systems, LNAV/VNAV NA below -21°C (-5°F) or above 39°C (103°F). DME/DME RNP-0.3 NA. RADAR monitoring required when R-2601 in use.	MISSED APPROACH: Climb to 6600 then climbing right turn to 9000 direct ADANE and hold.		
ATIS 125.0 254.3	SPRINGS APP CON 124.0 257.875	SPRINGS TOWER 119.9 360.6	GND CON 121.7 348.6	CLNC DEL 134.45 363.125



ELEV 6187	D	TDZE 6118
MIRL Rwy 13-31		
HIRL Rwys 17R-35L and 17L-35R		
REIL Rwys 13, 17R, 31, and 35R		
TDZ/CL Rwys 17L and 35R		



VGSI and RNAV glidepath not coincident (VGSI Angle 3.00/TCH 71).

FALUR	CEGIX	ADANE
8100	8100	6600 9000
GP 3.00° TCH 55	8100	*1 NM to RW35R *LNAV only
6.6 NM	5.1 NM	1 NM

CATEGORY	A	B	C	D
LPV DA		6318/40	200 (200-¾)	
LNAV/VNAV DA		6399/45	281 (300-¾)	
LNAV MDA	6500/55	382 (400-1)	6500/60	382 (400-1¼)
CIRCLING	6740-1 553 (600-1)	6800-1 613 (700-1)	7040-2½ 853 (900-2½)	7260-3 1073 (1100-3)

SW-1, 16 APR 2026 to 14 MAY 2026

SW-1, 16 APR 2026 to 14 MAY 2026