

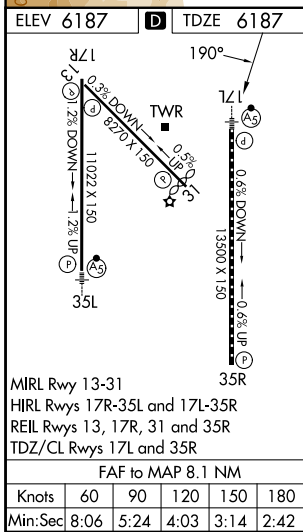
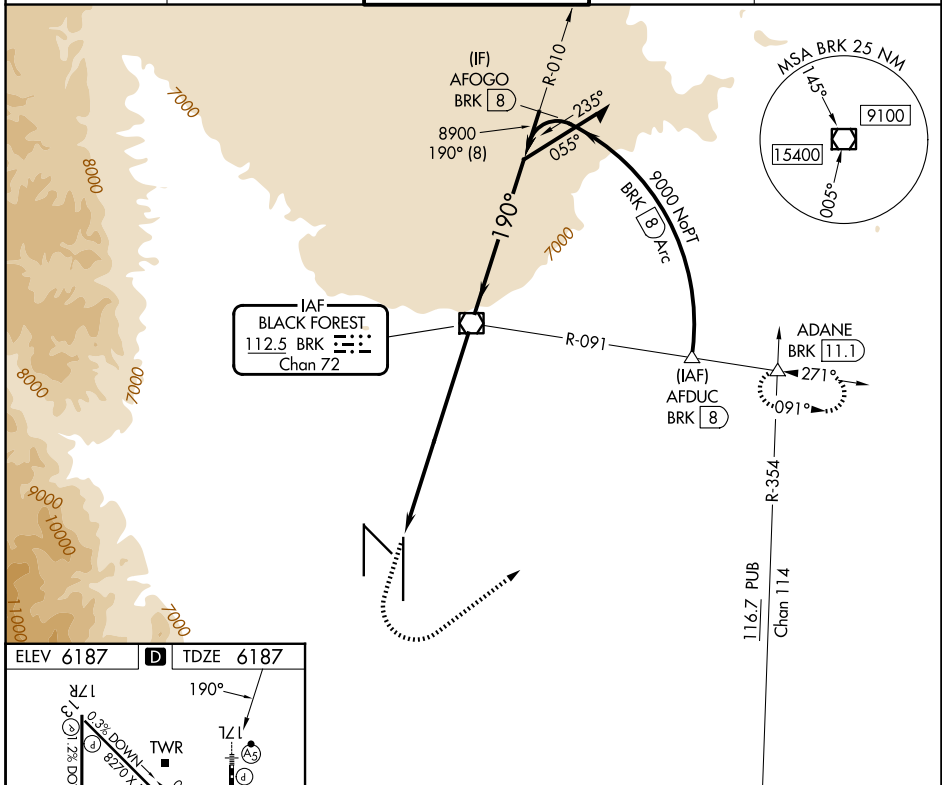
VOR/DME BRK 112.5 Chan 72	APP CRS 190°	Rwy Ldg TDZE 6187 Apt Elev 6187
---	------------------------	---

VOR RWY 17L

CITY OF COLORADO SPRINGS MUNI (COS)

DME and RADAR required for procedure entry at AFDUC.	MALSR 	MISSED APPROACH: Climb to 9000 then climbing left turn to 9000 on heading 045° and BRK VOR/DME R-091 to ADANE INT/BRK VOR/DME 11.1 DME and hold.
Inop table does not apply.		

ATIS 125.0 254.3	SPRINGS APP CON 124.0 257.875	SPRINGS TOWER 119.9 360.6	GND CON 121.7 348.6	CLNC DEL 134.45 363.125
----------------------------	---	-------------------------------------	-------------------------------	-----------------------------------



	7900	9000	BRK R-091	ADANE	
		hdg 045°			Remain within 10 NM
					9200 010° 9200
					3.10° TCH 53
					8900
					3.7 NM 4.4 NM
CATEGORY	A	B	C	D	
S-17L	7440-1¼ 1253 (1300-1¼)	7440-1½ 1253 (1300-1½)	7440-3	1253 (1300-3)	
CIRCLING	7440-1¼ 1253 (1300-1¼)	7440-1½ 1253 (1300-1½)	7440-3	1253 (1300-3)	

SW-1, 16 APR 2026 to 14 MAY 2026

SW-1, 16 APR 2026 to 14 MAY 2026