

COLUMBUS, MISSISSIPPI

ILS or LOC Y RWY 31C

LOC I-TBB 108.7	APCH CRS 315°	Rwy Igd 12,004	31C 8016	31R 218
		TDZE 213	218	
		Arprt Elev 218	218	

[USAF]

COLUMBUS AFB (KCBM)

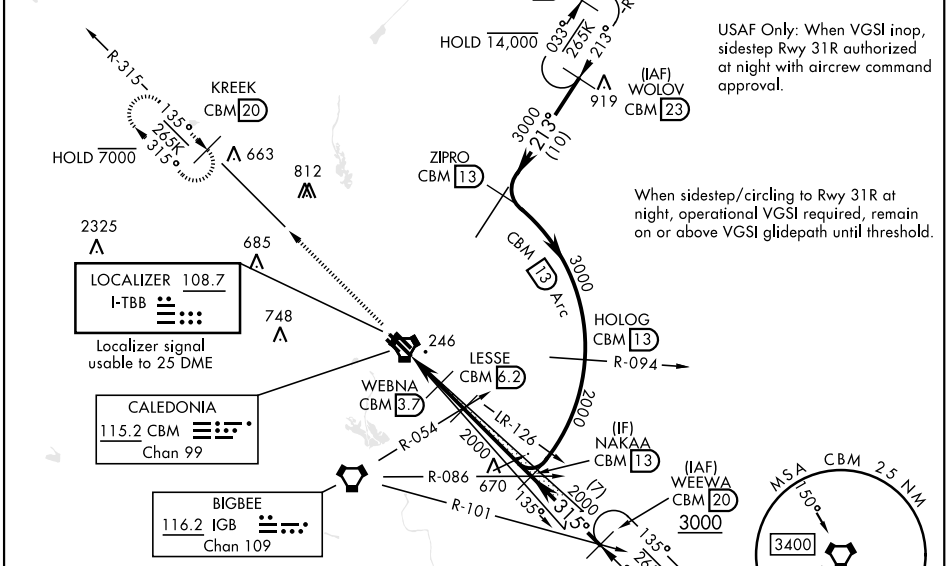
▼ * When ALS inop, increase RVR to 40, vis to ¼ mile.
 ** When ALS inop, increase CAT AB RVR to 55, vis to 1 mile: CAT CDE vis to 1¼ miles.
 † When ALS inop, increase CAT AB RVR to 55, vis to 1 mile: CAT CDE vis to 1¾ miles.

ALSF-1
 (A1)

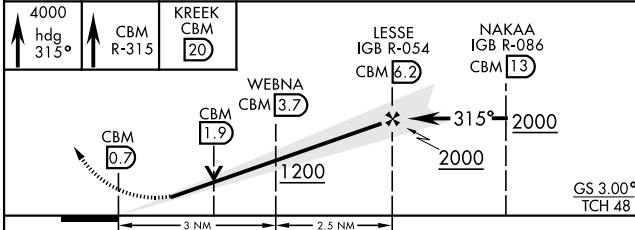
MISSED APPROACH: Climb heading 315° to intercept the VOR/TAC CBM R-315 outbound to KREEK (CBM R-315/20) and hold. Maintain 4000.

ATIS ★ 115.2 273.5	APP CON ★ N 126.075 239.25 SE 134.55 350.3 SW 135.6 323.275	TOWER ★ 126.65 379.925	GND CON ★ 121.9 275.8
------------------------------	---	----------------------------------	---------------------------------

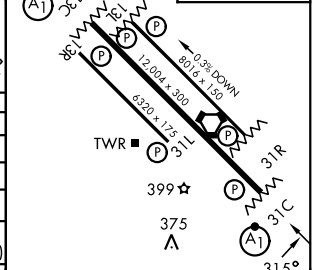
*** CAUTION:
 Rwy centerlines separated by 1450', sidestep not for civil use.



EMERG SAFE ALT 100 NM 3700



ELEV	218	TDZE 31C	213
		TDZE 31R	218



CATEGORY	A	B	C	D	E
S-ILS 31C**		413/24	200	(200-½)	
S-LOC 31C**	640/24	427 (500-½)	640/40	427 (500-¾)	
SIDESTEP RWY 31R***	640/55	422 (500-1)	640-1 ¼	422 (500-1¼)	
CIRCLING	700-1 482 (500-1)	720-1 502 (600-1)	740-1 ½ 522 (600-1½)	880-2 662 (700-2)	1240-3 1022(1100-3)
LOCAL ALTIMETER, WITHOUT LAST STEPDOWN FIX					
S-LOC 31C †	720/24	507 (600-½)	720/55	507 (600-1)	
SIDESTEP*** RWY 31R	760/55	542 (600-1)	760-1 ⅝	542 (600-1⅝)	
CIRCLING	760-1	542 (600-1)	760-1 ⅝ 542 (600-1⅝)	880-2 662 (700-2)	1240-3 1022(1100-3)

HIRL Rwy 13C-31C, 13L-31R					
MIRL Rwy 13R-31L					
FAF to MAP 5.5 NM					
Knots	60	90	120	150	180
Min:Sec	5:30	3:40	2:45	2:12	1:50

COLUMBUS, MISSISSIPPI
Amdt 2 23FEB23

33°39'N-88°27'W

COLUMBUS AFB (KCBM)

ILS or LOC Y RWY 31C

SC-4, 16 APR 2026 to 14 MAY 2026

SC-4, 16 APR 2026 to 14 MAY 2026