

COLUMBUS, MISSISSIPPI

RNAV (GPS) RWY 13C

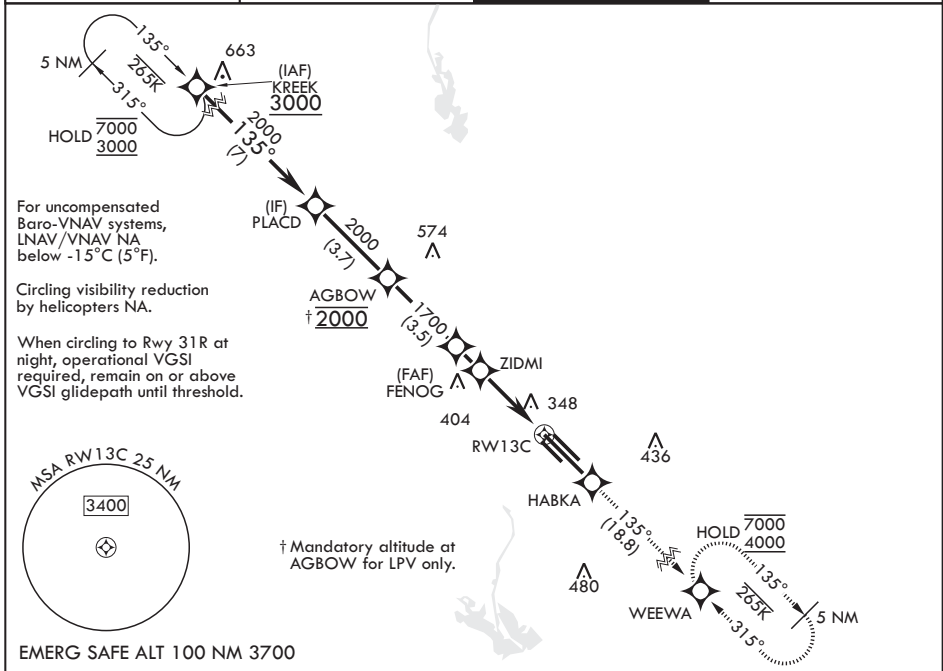
WAAS CH 53183 W13A	APCH CRS 135°	Rwy ldg TDZE Arpt Elev	12,004 196 218
--------------------------	------------------	------------------------------	----------------------

(USAF)

COLUMBUS AFB (KCBM)

RNP APCH	ALSF-1	MISSED APPROACH: Climb to 4000 direct HABKA, direct track to WEEWA and hold as published.
<p>▼ * When ALS inop increase RVR to 40, vis to 3/4 mile. ** When ALS inop, increase vis to 1 3/8 miles. *** When ALS inop, increase CAT AB RVR to 55, vis to 1 mile, CAT CDE vis to 1 3/8 miles.</p>		

ATIS* 115.2 273.5	APP CON* 126.075 239.25 N 134.55 350.3 SE 135.6 323.275 SW	TOWER* 126.65 379.925	GND CON* 121.9 275.8
----------------------	---	--------------------------	-------------------------



KREEK 3000	PLACD 2000	AGBOW †2000	FENOG 1700	ZIDMI 1260	RWY13C	HABKA 4000	tr 135°	WEEWA ELEV 218	TDZE 196
<p>GP 3.00° TCH 49</p>									
CATEGORY	A	B	C	D	E				
LPV DA*	396/24		200	(200-1/2)					
LNAV/VNAV DA**	666/50		470	(500-1)					
LNAV MDA***	680/24	484 (500-1/2)	680/50	484	(500-1)				
CIRCLING	700-1 482 (500-1)	720-1 502 (600-1)	740-1 1/2 522 (600-1 1/2)	880-2 662 (700-2)	1240-3 1022 (1100-3)	MRL Rwy 13R-31L HIRL Rws 13C-31C and 13L-31R TWR 399			

COLUMBUS, MISSISSIPPI

33°39'N - 88°27'W

COLUMBUS AFB (KCBM)

Amdt 4 07SEP23

RNAV (GPS) RWY 13C

SC-4, 16 APR 2026 to 14 MAY 2026

SC-4, 16 APR 2026 to 14 MAY 2026