

RNAV (GPS) E

APCH CRS 090°	Rwy Idg TDZE Arprt Elev	N/A N/A 218
-------------------------	-------------------------------	--------------------------

(USAF)

COLUMBUS AFB (KCBM)

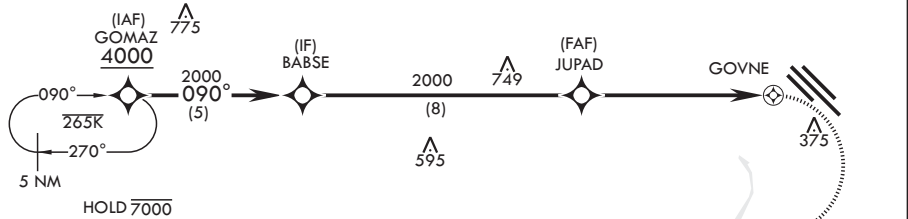
RNP APCH-GPS	MISSED APPROACH: Climbing right turn to 3000 direct JOLLI and hold or as directed by ATC.
--------------	---

ATIS* 115.2 273.5	APP CON* 126.075 239.25 N 134.55 350.3 SE 135.6 323.275 SW	TOWER* 126.65 379.925	GND CON* 121.9 275.8
-----------------------------	--	---------------------------------	--------------------------------

Circling visibility reduction by helicopters NA.

When circling to Rwy 31R at night, operational VGSI required, remain on or above VGSI glidepath until threshold.

DME/DME RNP-0.3 NA



SC-4, 16 APR 2026 to 14 MAY 2026

SC-4, 16 APR 2026 to 14 MAY 2026

FOR USE BY 14 FTW ACFT ONLY

EMERG SAFE ALT 100 NM 3700

BABSE 2000 ——— 090° ———> JUPAD 2000		3000 JOLLI 	ELEV 218 	
JUPAD 2000 ———> GOVNE 5.5 NM				
CATEGORY	A	B	C	D
CIRCLING	760-1 542	(600-1)	760-1½ 542 (600-1½)	NA
HIRL Rwys 13C-31C and 13L-31R MRL Rwy 13R-31L		TWR 399 BCN 399		

RNAV (GPS) E