

COLUMBUS, MISSISSIPPI

# TACAN RWY 31R

VORTAC CBM <b>115.2</b> Chan <b>99</b>	APCH CRS <b>302°</b>	Rwy Idg TDZE <b>218</b> Arpt Elev <b>218</b>
--	-------------------------	--

[USAF]

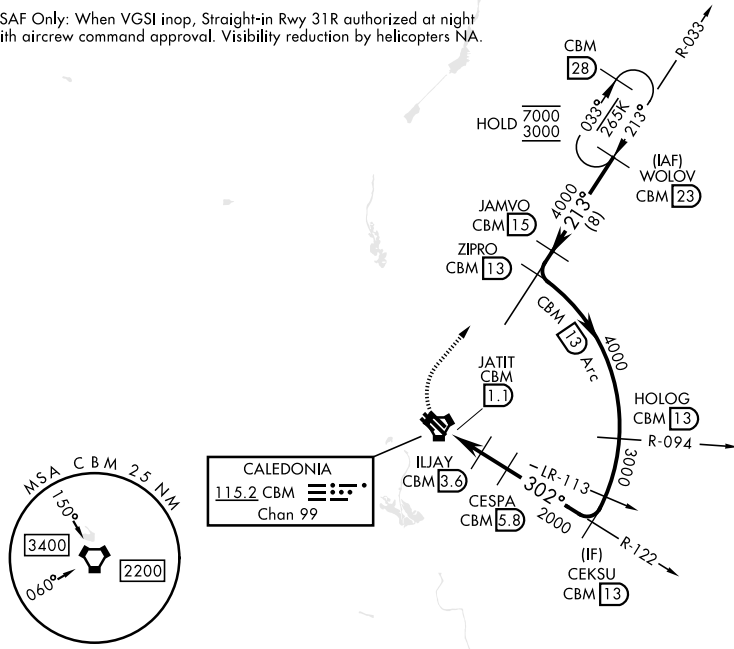
COLUMBUS AFB (KCBM)

**Missed approach requires use of RNAV or ATC RADAR monitoring.** MISSED APPROACH: Climbing right turn to WOLOV and hold as published. Maintain 3000.

ATIS ★ <b>115.2 273.5</b>	APP CON ★ N <b>126.075 239.25</b> SE <b>134.55 350.3</b> SW <b>135.6 323.275</b>	TOWER ★ <b>126.65 379.925</b>	GND CON ★ <b>121.9 275.8</b>
------------------------------	---	----------------------------------	---------------------------------

Straight-in Rwy 31R at Night, operational VGSI required, remain on or above VGSI glidepath until threshold.

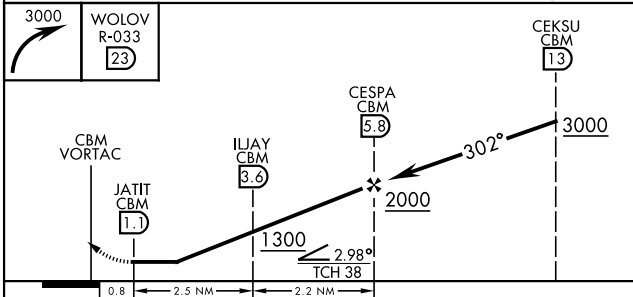
USAF Only: When VGSI inop, Straight-in Rwy 31R authorized at night with aircrew command approval. Visibility reduction by helicopters NA.



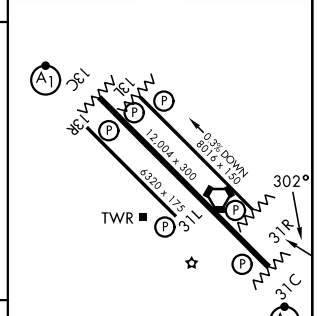
SC-4, 16 APR 2026 to 14 MAY 2026

SC-4, 16 APR 2026 to 14 MAY 2026

EMERG SAFE ALT 100 NM 3700



ELEV	218	TDZE	218
------	-----	------	-----



CATEGORY	A	B	C	D	E
S-31R	680/55	462 (500-1)	680-1 3/8	462 (500-1 3/8)	
CIRCLING	700-1 482 (500-1)	720-1 502 (600-1)	740-1 1/2 522 (600-1 1/2)	880-2 662 (700-2)	1240-3 1022 (1100-3)

MIRL Rwy 13R-31L  
HIRL Rwy 13C-31C, 13L-31R

COLUMBUS, MISSISSIPPI

33° 39' N-88° 27' W

COLUMBUS AFB (KCBM)

Amdt 1 21 APR 22

# TACAN RWY 31R