

# RNAV (RNP) Z RWY 28L

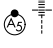
JOHN GLENN COLUMBUS INTL (CMH)

APP CRS	Rwy Ldg	<b>10114</b>
<b>281°</b>	TDZE	<b>815</b>
	Apt Elev	<b>815</b>

**RNP AR APCH.**

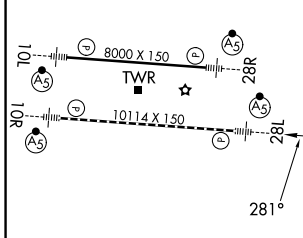
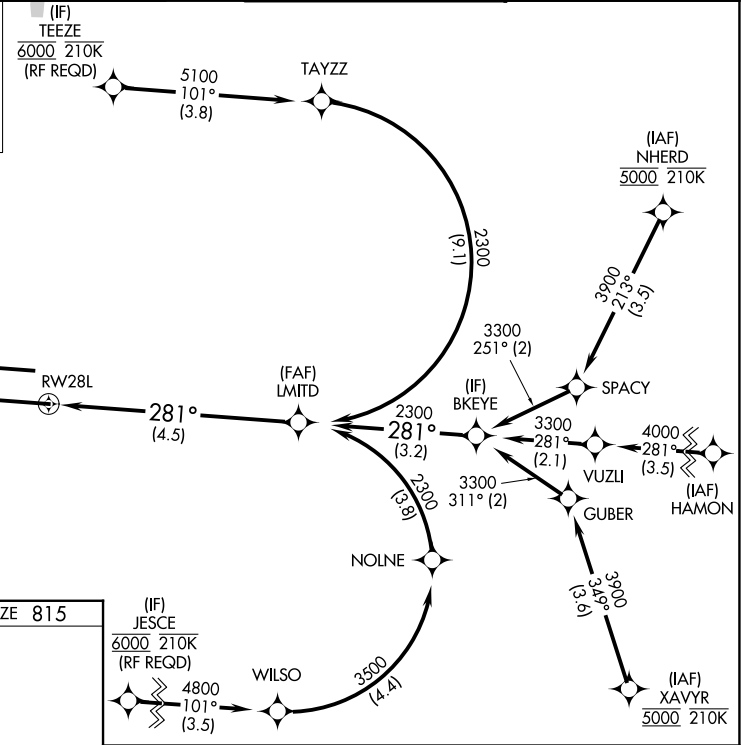
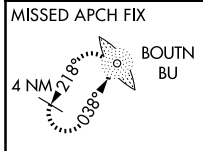
**▼** For uncompensated Baro-VNAV systems, procedure NA below -19°C or above 54°C. For inop ALS, increase RNP 0.30 all Cats visibility to 1 3/8 SM. Simultaneous approach authorized.

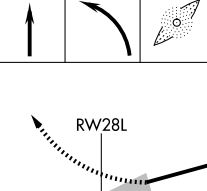
**MALSRS**



**MISSED APPROACH:**  
Climb to 1400 then climbing left turn to 3000 direct BOUTN LOM and hold.

D-ATIS <b>124.6</b>	COLUMBUS APP CON <b>125.95 371.975</b>	COLUMBUS TOWER <b>132.7 257.8</b>	GND CON <b>121.9 348.6</b>
------------------------	---	--------------------------------------	-------------------------------



1400	3000	BU	VGSI and RNAV glidepath not coincident (VGSI Angle 3.00°/ TCH 68).
			LMITD
			See planview for multiple IF locations.
RW28L			
281°			
2300			
2300			
4.5 NM			
GP 3.00° TCH 52			

CATEGORY	A	B	C	D
RNP 0.17 DA		1147/26	332 (400-1/2)	
RNP 0.30 DA		1314/50	499 (500-1)	

TDZL/RCLS Rwy 10R-28L  
HIRL Rwy 10R-28L and 10L-28R

**AUTHORIZATION REQUIRED**

EC-2, 16 APR 2026 to 14 MAY 2026

EC-2, 16 APR 2026 to 14 MAY 2026