

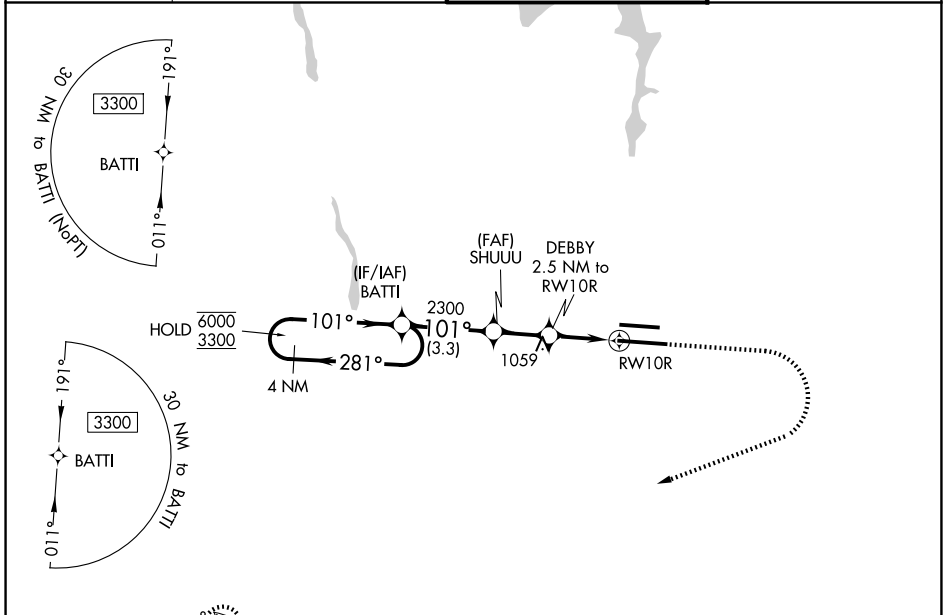
WAAS CH 99603 W10A	APP CRS 101°	Rwy Ldg TDZE 809 Apt Elev 815	10114
--	------------------------	---	--------------

RNAV (GPS) Y RWY 10R

JOHN GLENN COLUMBUS INTL (CMH)

RNP APCH.	MALSR	MISSED APPROACH: Climb to 1400 then climbing right turn to 3000 direct BU LOM and hold.
<p>⚠ For uncompensated Baro-VNAV systems, LNAV/VNAV NA below -19°C or above 54°C. LNAV procedure NA during simultaneous operations. Use of FD or AP providing RNAV track guidance required during simultaneous operations. For inop ALS, increase LNAV Cat C/D visibility to 1$\frac{1}{2}$ SM. Simultaneous approach authorized.</p>		

D-ATIS 124.6	COLUMBUS APP CON 125.95 371.975	COLUMBUS TOWER 132.7 257.8	GND CON 121.9 348.6
------------------------	---	--------------------------------------	-------------------------------



EC-2, 16 APR 2026 to 14 MAY 2026

EC-2, 16 APR 2026 to 14 MAY 2026

	ELEV 815	D TDZE 809		
4 NM Holding Pattern	VGSI and RNAV glidepath not coincident (VGSI Angle 3.00/TCH 70).	1400 3000 BU		
<p>6000 ← 281°</p> <p>3300 → 101°</p> <p>GP 3.00° TCH 54</p>	<p>BATTI SHUUU DEBBY 2.5 NM to RWY 10R</p> <p>*1.4 NM to RWY 10R</p> <p>*1660</p>	* LNAV only.		
CATEGORY	A	B	C	D
LPV DA		1009/18	200 (200- $\frac{1}{2}$)	
LNAV/VNAV DA		1194/35	385 (400- $\frac{5}{8}$)	
LNAV MDA	1320/24	511 (600- $\frac{1}{2}$)	1320/55	511 (600-1)
CIRCLING	1340-1	525 (600-1)	1520-2 705 (800-2)	1520-2 $\frac{1}{4}$ 705 (800-2 $\frac{1}{4}$)
				TDZL/RCLS Rwy 10R-28L HIRL Rwy 10R-28L and 10L-28R