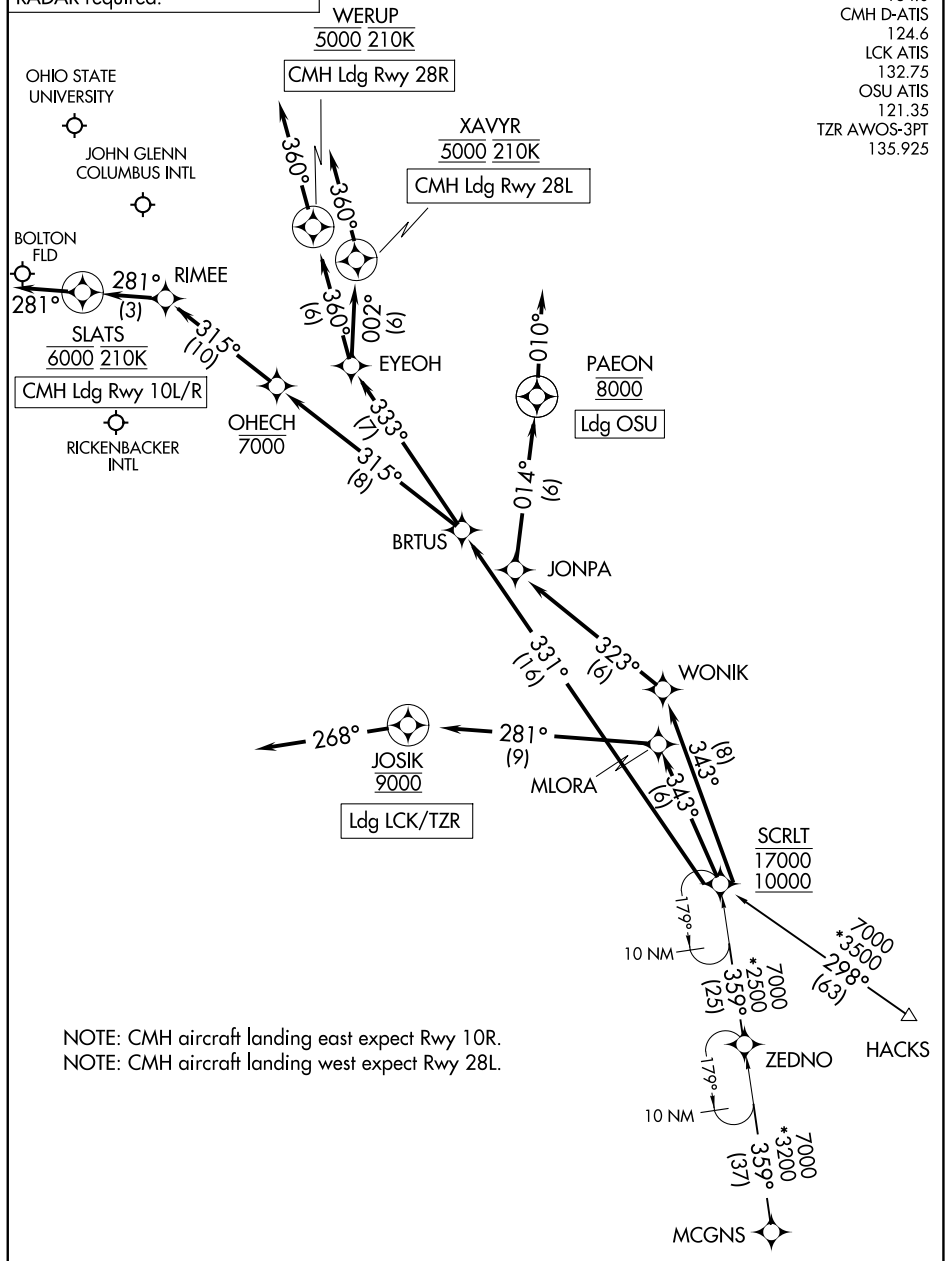


# SCRLT TWO ARRIVAL (RNAV)

COLUMBUS, OHIO

RNAV 1 - DME/DME/IRU or GPS.  
RADAR required.

COLUMBUS APP CON 134.0  
 CMH D-ATIS 124.6  
 LCK ATIS 132.75  
 OSU ATIS 121.35  
 TZR AWOS-3PT 135.925



EC-2, 16 APR 2026 to 14 MAY 2026

EC-2, 16 APR 2026 to 14 MAY 2026

NOTE: CMH aircraft landing east expect Rwy 10R.  
 NOTE: CMH aircraft landing west expect Rwy 28L.

(CONTINUED ON FOLLOWING PAGE)

NOTE: Chart not to scale.

# SCRLT TWO ARRIVAL (RNAV)

COLUMBUS, OHIO

# SCRLT TWO ARRIVAL (RNAV)

COLUMBUS, OHIO

## ARRIVAL ROUTE DESCRIPTION

HACKS TRANSITION (HACKS.SCRLT2)

MCGNS TRANSITION (MCGNS.SCRLT2)

CMH: from SCRLT on track 331° to BRTUS.

LANDING CMH RUNWAY 10L/R: From BRTUS on track 315° to cross OHECH at or below 7000, then on track 315° to RIMEE, then on track 281° to cross SLATS at 6000 and at 210K, then on track 281°. Expect RADAR vectors to final approach course.

LANDING CMH RUNWAY 28L: From BRTUS on track 333° to EYEOH, then on track 002° to cross XAVYR at 5000 and at 210K, then on track 360°. Expect RADAR vectors for ILS Rwy 28L approach.

LANDING CMH RUNWAY 28R: From BRTUS on track 333° to EYEOH, then on track 360° to cross WERUP at 5000 and at 210K, then on track 360°. Expect RADAR vectors for ILS Rwy 28R approach.

LANDING TZR/LCK: From SCRLT on track 343° to MLORA, then on track 281° to cross JOSIK at 9000, then on track 268°. Expect RADAR vectors to final approach course.

LANDING OSU: From SCRLT on track 343° to WONIK, then on track 323° to JONPA, then on track 014° to cross PAEON at 8000, then on track 010°. Expect RADAR vectors to final approach course.

EC-2, 16 APR 2026 to 14 MAY 2026

EC-2, 16 APR 2026 to 14 MAY 2026