

APP CRS	Rwy Ldg	5364
171°	TDZE	339
	Apt Elev	342

RNAV (GPS) RWY 17

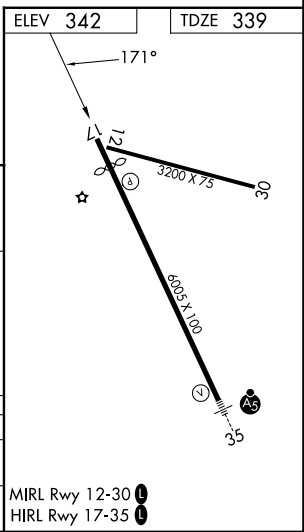
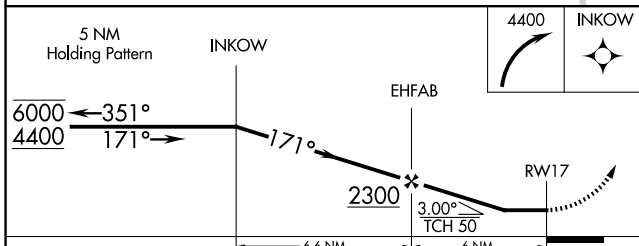
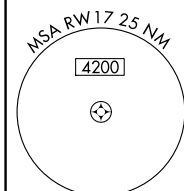
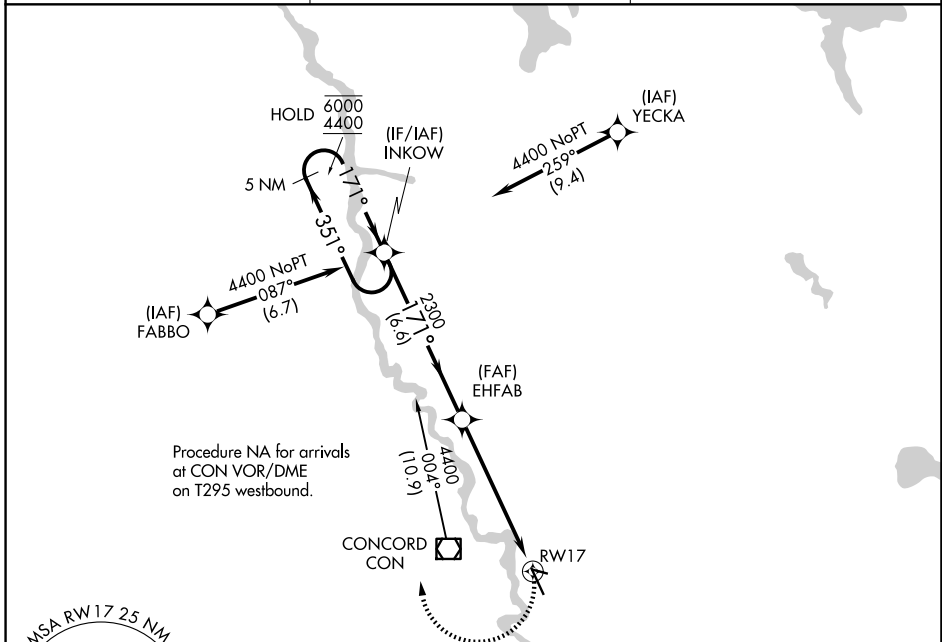
CONCORD MUNI (CON)

RNP APCH - GPS.

▼ Straight-in Rwy 17 NA at night, Circling Rwys 12, 17, 30 NA at night.
▲ Rwy 17 helicopter visibility reduction below 1 SM NA.

MISSED APPROACH: Climbing right turn to 4400 direct INKOW and hold, continue climb-in-hold to 4400.

ASOS 132.325	BOSTON APP CON 127.35 269.075	UNICOM 122.7 (CTAF) 0
------------------------	---	---------------------------------



CATEGORY	A	B	C	D
LNAV MDA	1000-1	661 (700-1)	1000-1 $\frac{7}{8}$	661 (700-1 $\frac{7}{8}$)
CIRCLING	1000-1 658 (700-1)	1080-1 738 (800-1)	1500-3	1158 (1200-3)

MIRL Rwy 12-30 **0**
 HIRL Rwy 17-35 **0**

NE-1, 16 APR 2026 to 14 MAY 2026

NE-1, 16 APR 2026 to 14 MAY 2026