

WAAS CH 82030 W03B	APP CRS 041°	Rwy Ldg TDZE 1503 Apt Elev 1503
--	------------------------	---

RNAV (GPS) Y RWY 3

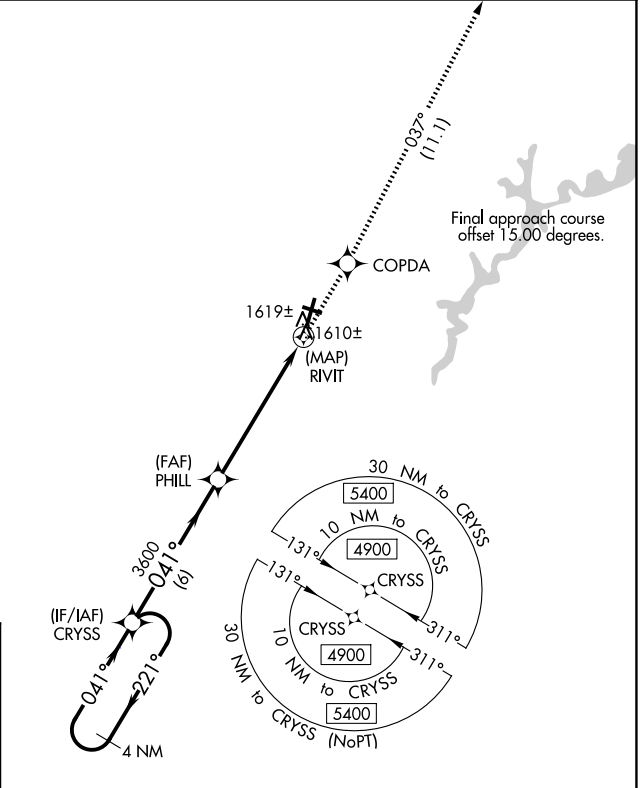
ALTOONA/BLAIR COUNTY (A00)

RNP APCH - GPS.

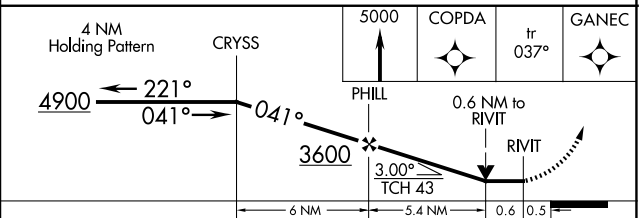
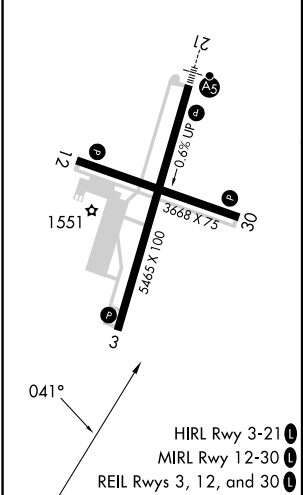
- ▼ When local altimeter setting not received, use HMZ altimeter setting; increase all MDA 100 feet. Increase LNAV and LP Cats C/D visibilities $\frac{2}{3}$ SM and Circling Cat A $\frac{1}{4}$ SM. Rwy 3, helicopter visibility reduction below $\frac{3}{4}$ SM NA. Circling NA for Rwys 12 and 30. VDP NA when using HMZ altimeter setting. Circling NA for Cats C, D northwest of Rwys 12 and 21.
- ▲

MISSED APPROACH: Climb to 5000 direct COPDA on track 037° to GANEC and hold, continue climb-in-hold to 5000.

ASOS 127.125	JOHNSTOWN APP CON ★ 121.2 299.2	CTAF 123.60
------------------------	---	-----------------------



ELEV 1503	D	TDZE 1503
-----------	----------	-----------



CATEGORY	A	B	C	D
LP MDA	1860-1 357 (400-1)			
LNAV MDA	1880-1 377 (400-1)			
CIRCLING	2240-1 737 (800-1)	2240-1 $\frac{1}{4}$ 737 (800-1 $\frac{1}{4}$)	2800-3 1297 (1300-3)	2840-3 1337 (1400-3)

NE-4, 16 APR 2026 to 14 MAY 2026

NE-4, 16 APR 2026 to 14 MAY 2026