

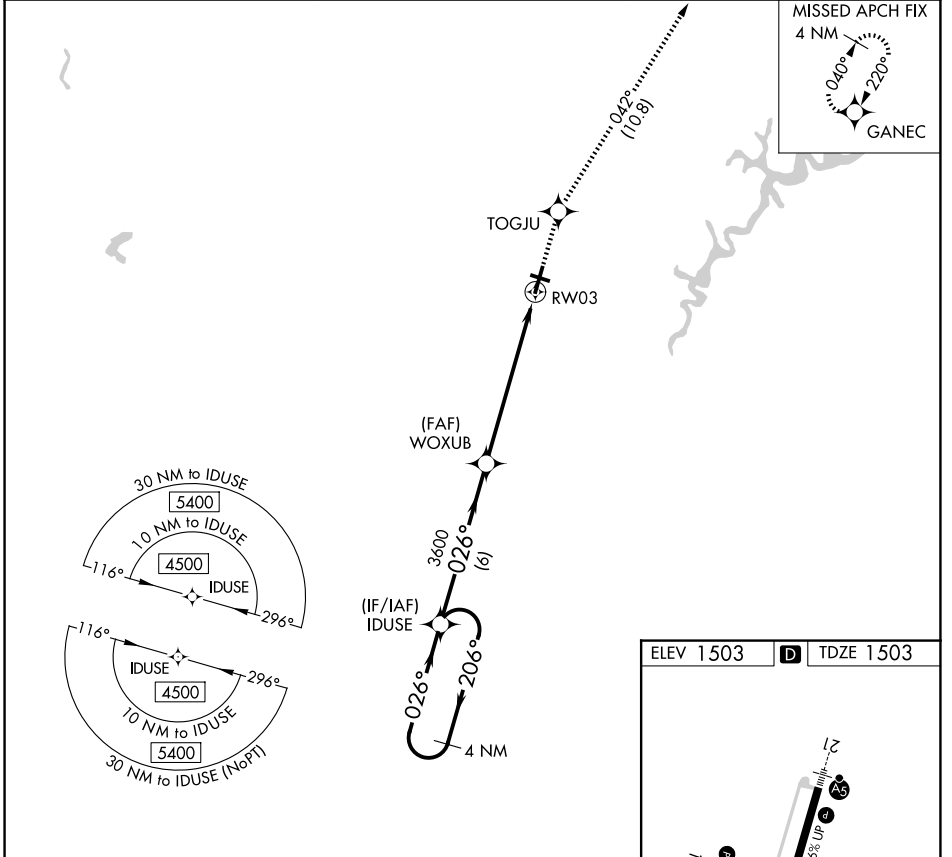
WAAS CH 82529 W03A	APP CRS 026°	Rwy Ldg TDZE 1503 Apt Elev 1503
--	------------------------	---

RNAV (GPS) Z RWY 3

ALTOONA/BLAIR COUNTY (A00)

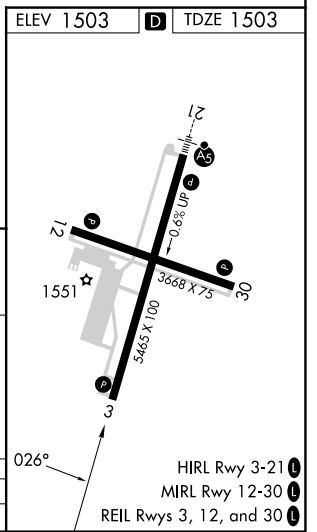
▼ Rwy 3 helicopter visibility reduction below 3/4 SM NA. DME/DME RNP-0.3 NA. When local altimeter setting not received, use Bedford County altimeter setting and increase all DA 84 feet, and increase all visibilities 3/8 mile.	MISSED APPROACH: Climb to 5000 direct TOGJU and on track 042° to GANEC and hold, continue climb-in-hold to 5000.
--	---

ASOS 127.125	JOHNSTOWN APP CON ★ 121.2 299.2	CTAF 123.60
------------------------	---	-----------------------



NE-4, 16 APR 2026 to 14 MAY 2026

NE-4, 16 APR 2026 to 14 MAY 2026



VGSI and RNAV glidepath not coincident (VGSI Angle 3.00/TCH 43).		5000	TOGJU	tr 042°	GANEC
4 NM Holding Pattern	IDUSE				
4500	← 206°	→ 026°	026°	WOXUB 3600	RW03
GP 3.00°			3600		
TCH 55			6 NM	6.4 NM	
CATEGORY	A	B	C	D	
LPV DA		1828-1	325 (400-1)		

HIRL Rwy 3-21 **1**
MIRL Rwy 12-30 **1**
REIL Rws 3, 12, and 30 **1**