

WAAS CH 45620 W31A	APP CRS 319°	Rwy Ldg TDZE Apt Elev	5001 42 42
--	------------------------	-----------------------------	---------------------------------------

RNAV (GPS) RWY 31

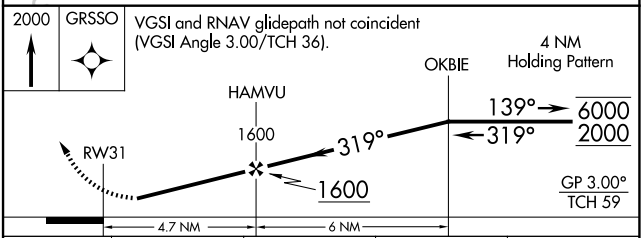
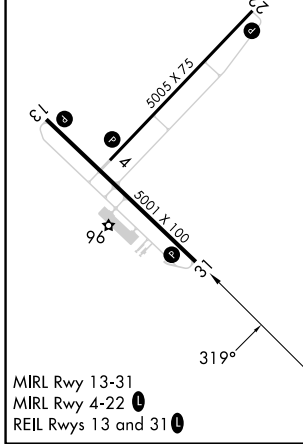
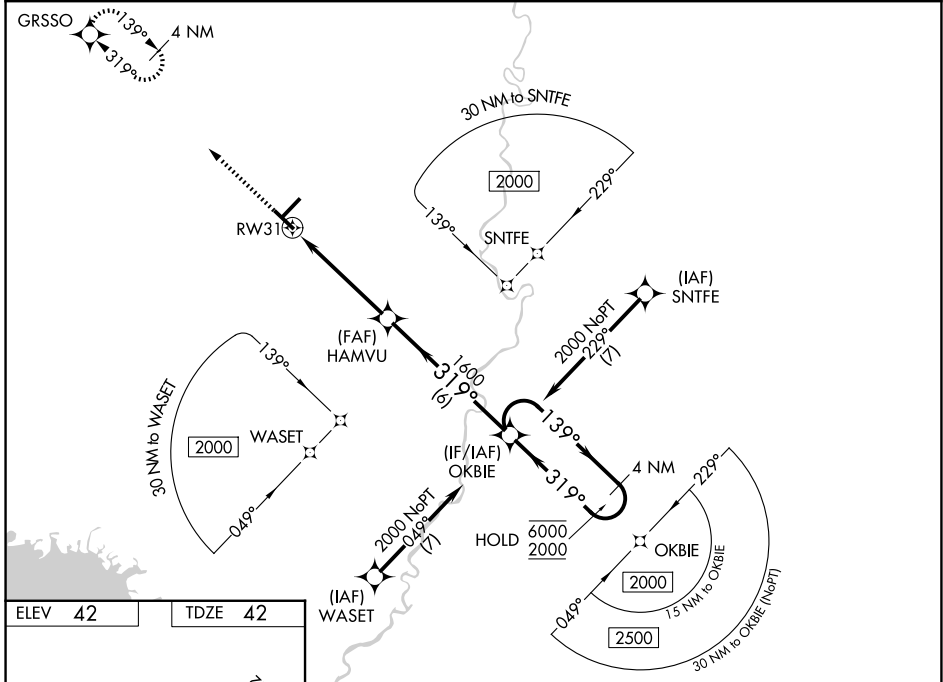
CROSS CITY (CTY)

RNP APCH - GPS.

⚠ Rwy 31 helicopter visibility reduction below 1 SM NA. Baro-VNAV NA when using X60 altimeter setting. For uncompensated Baro-VNAV systems, LNAV/VNAV NA below 15°C or above 54°C. When local altimeter setting not received, use X60 altimeter setting and increase LPV DA to 383 feet; increase LNAV/VNAV DA to 514 feet and all visibilities ¼ SM. Increase all MDAs 100 feet and LNAV visibility Cats C and D ¼ SM, and Circling visibility Cats C and D ¼ SM. Straight-in Rwy 31 NA at night, Circling Rwy 4, 13, 31 NA at night.

MISSED APPROACH:
Climb to 2000 direct GRSO and hold.

AWOS-3PT 120.775	X60 AWOS-3T 118.425	JACKSONVILLE CENTER 127.8 352.0	UNICOM 122.8 (CTAF) 0
----------------------------	-------------------------------	---	---------------------------------



2000 GRSO	VGSi and RNAV glidepath not coincident (VGSi Angle 3.00/TCH 36).			
↑	OKBIE Holding Pattern			
	Holding Pattern		4 NM	
	RW31 1600		OKBIE 139° 6000 / 319° 2000	
	4.7 NM		6 NM	
	GP 3.00° TCH 59			
CATEGORY	A	B	C	D
LPV DA	292-1		250 (300-1)	
LNAV/VNAV DA	423-1 1/8		381 (400-1 1/8)	
LNAV MDA	500-1	458 (500-1)	500-1 3/8	458 (500-1 3/8)
CIRCLING	500-1 458 (500-1)	520-1 478 (500-1)	660-1 3/4 618 (700-1 3/4)	660-2 618 (700-2)

SE-3, 16 APR 2026 to 14 MAY 2026

SE-3, 16 APR 2026 to 14 MAY 2026