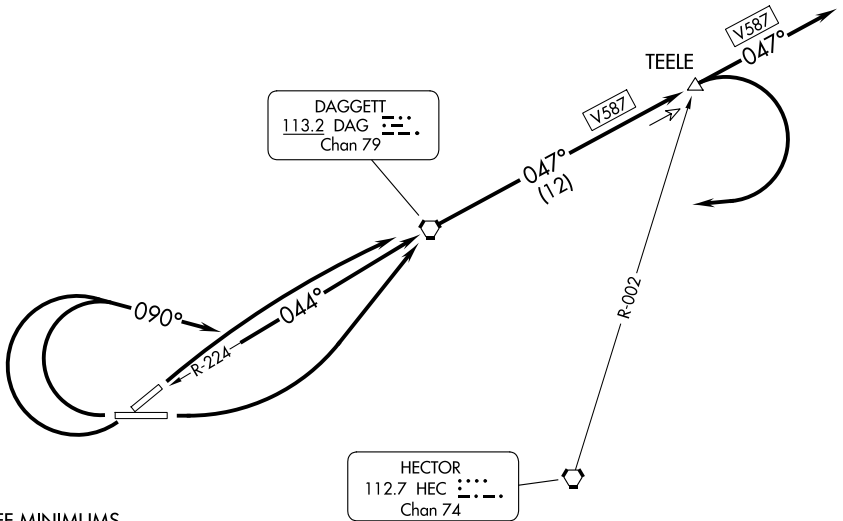


LOS ANGELES CENTER  
132.5 284.7



**TAKEOFF MINIMUMS**

Rwy 4: Standard.

Rwy 8: Standard.

Rwy 22: Standard with minimum climb of 452' per NM to 3700, or 4600-3 for climb in visual conditions.

Rwy 26: Standard with minimum climb of 420' per NM to 4600, or 4600-3 for climb in visual conditions.

**TAKEOFF OBSTACLE NOTES**

Rwy 4: Bush 44' from DER, 286' left of centerline, 6' AGL/1914' MSL. Bush 51' from DER, 295' left of centerline, 7' AGL/1915' MSL. Bush 126' from DER, 86' left of centerline, 4' AGL/1912' MSL.

Rwy 8: Multiple bushes beginning 113' from DER, 259' left of centerline, up to 16' AGL/1924' MSL.

Rwy 22: Tree 5668' from DER, 1824' left of centerline, 40' AGL/2143' MSL. Multiple poles 78' left of centerline, up to 73' AGL/1995' MSL. Railroad 1224' from DER, 402' left of centerline, 23' AGL/1980' MSL. Obstruction light on ROD 64' from DER, 495' right of centerline, 45' AGL/1968' MSL. Pole 2635' from DER, 279' right of centerline, 72' AGL/1995' MSL.

Rwy 26: Vehicles on road 360' from DER, 265' left of centerline, 15' AGL/1946' MSL. Railroad 953' from DER, 355' left of centerline, 23' AGL/1958' MSL.

NOTE: Chart not to scale.

**DEPARTURE ROUTE DESCRIPTION**

**TAKEOFF RUNWAY 4:** Climbing right turn direct DAG VORTAC, thence. . .

**TAKEOFF RUNWAY 8:** Climbing left turn direct DAG VORTAC, thence. . .

**TAKEOFF RUNWAY 22:** Climbing right turn heading 090° to intercept DAG R-224 to DAG VORTAC. Thence. . . or climb in visual conditions to cross Barstow-Daggett Airport at or above 6800 before proceeding on course.

**TAKEOFF RUNWAY 26:** Climbing right turn heading 090° to intercept DAG R-224 to DAG VORTAC. Thence. . . or climb in visual conditions to cross Barstow-Daggett Airport at or above 6800 before proceeding on course.

. . . on DAG R-047 to TEELE INT/DAG 12 DME, aircraft proceeding via V587 continue climb on course, all others, climbing right turn to 7500 to DAG VORTAC then as assigned.