

WAAS CH 72813 W26A	APP CRS 255°	Rwy Ldg TDZE Apt Elev	6402 1918 1930
--	------------------------	-----------------------------	---

RNAV (GPS) RWY 26

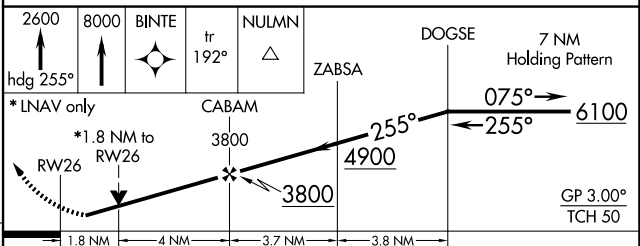
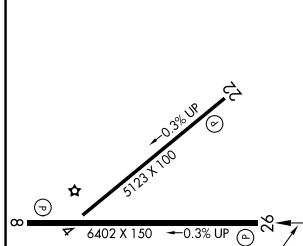
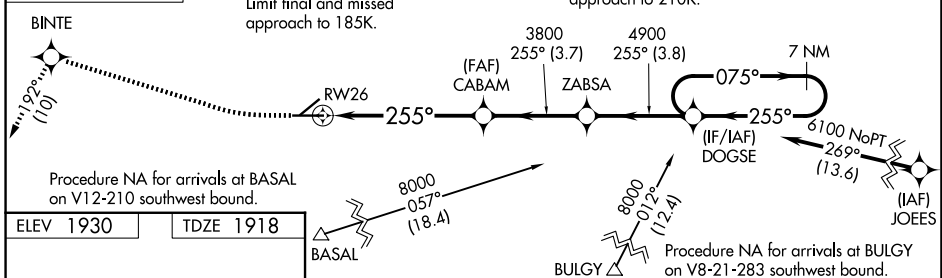
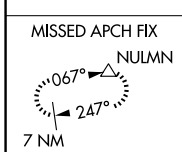
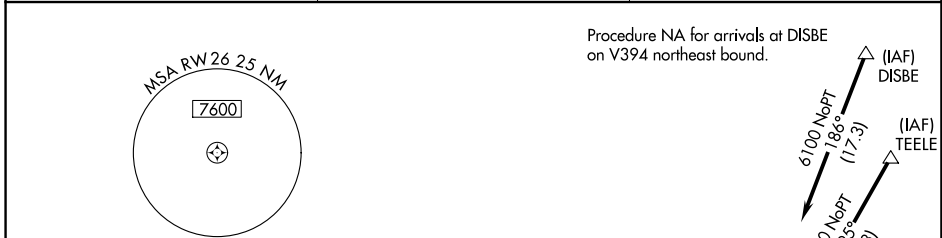
BARSTOW-DAGGETT (DAG)

RNP APCH.

⚠ For uncompensated Baro-VNAV systems, LNAV/VNAV NA below -4°C or above 54°C. Circling NA for Cat D south of Rwy 8-26. Rwy 26 helicopter visibility reduction below 3/4 SM NA.
#Missed approach requires a minimum climb of 220 feet per NM to 8000.

MISSED APPROACH: Climb to 2600 on heading 255° then climb to 8000 direct BINTE and on track 192° to NULMN and hold, continue climb-in-hold to 8000.

ASOS 132.175	LOS ANGELES CENTER 132.5 284.7	UNICOM 123.0 (CTAF) 0
------------------------	--	---------------------------------



CATEGORY	A	B	C	D
LPV DA#	2222-1		304 (300-1)	
LPV DA	2343-1 3/8		425 (500-1 3/8)	
LNAV/VNAV DA	2389-1 5/8		471 (500-1 5/8)	
LNAV MDA	2540-1	622 (700-1)	2540-1 3/4	622 (700-1 3/4)
CIRCLING	2640-1 710 (800-1)	2860-1 1/4 930 (1000-1 1/4)	3500-3 1570 (1600-3)	

SW-3, 16 APR 2026 to 14 MAY 2026

SW-3, 16 APR 2026 to 14 MAY 2026