

BACHMAN TWO DEPARTURE
(BACH2, TTT) 27NOV25

LONE STAR DEP CON
118.55 290.35
D-ATIS
120.15
CLNC DEL
127.9
GND CON
121.75 348.6
LOVE TOWER
123.7 239.3

DME and RADAR required.

LITTLE ROCK
115.1 LT
Chan 98

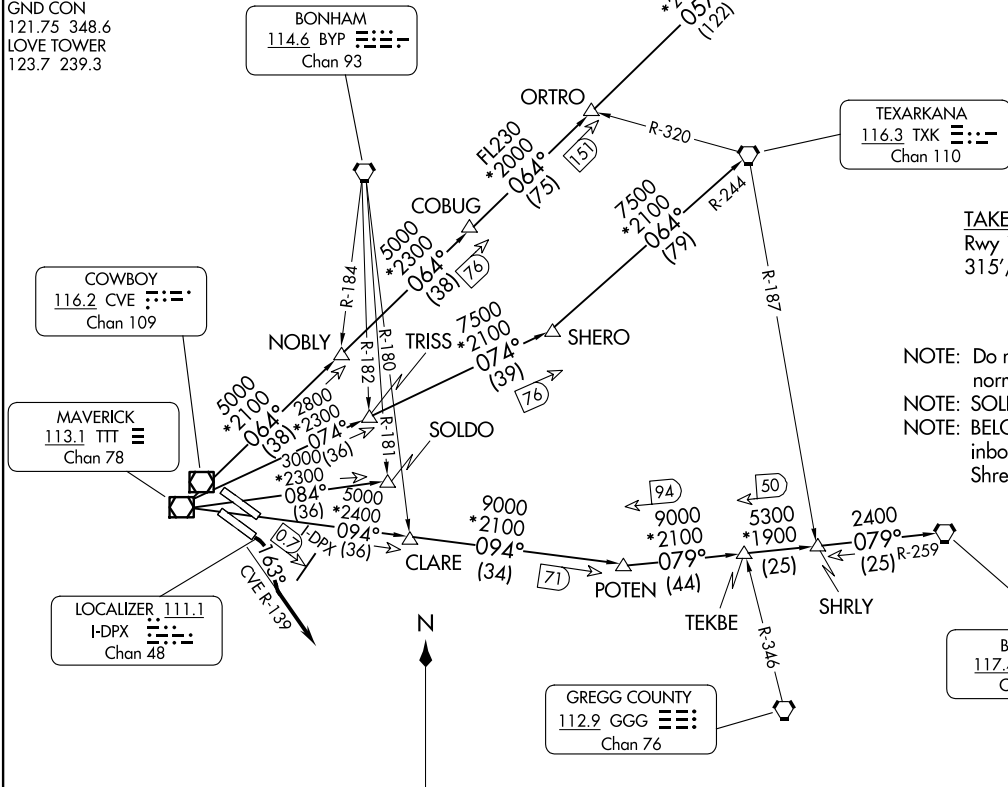
TOP ALTITUDE:
6000

(BACH2, TTT) 25331
BACHMAN TWO DEPARTURE

A1-106 (FAA)

DALLAS LOVE FLD (DAL)
DALLAS, TEXAS

DALLAS, TEXAS
DALLAS LOVE FLD (DAL)



TEXARKANA
116.3 TXK
Chan 110

TAKEOFF MINIMUMS
Rwy 13R: Standard with minimum climb of
315'/NM to 1700.

- NOTE: Do not file - To be assigned by ATC normally between 2100-0600 LCL time.
- NOTE: SOLDO Transition: ATC assigned.
- NOTE: BELCHER Transition: For aircraft inbound to Jackson, Monroe and Shreveport terminal areas.

COWBOY
116.2 CVE
Chan 109

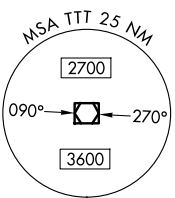
MAVERICK
113.1 TTT
Chan 78

LOCALIZER 111.1
I-DPX
Chan 48

BONHAM
114.6 BYP
Chan 93

GREGG COUNTY
112.9 GGG
Chan 76

BELCHER
117.4 EIC
Chan 121



NOTE: Chart not to scale.

(CONTINUED ON FOLLOWING PAGE)

BACHMAN TWO DEPARTURE



DEPARTURE ROUTE DESCRIPTION

TAKEOFF RUNWAY 13R: Climb on heading 163° no later than I-DPX 0.7 DME outbound on I-DPX localizer southeast course to intercept and climb on CVE R-139 for RADAR vectors to appropriate route, maintain 6000, expect filed altitude 10 minutes after departure.

ALL AIRCRAFT: ATC climb gradient: If unable to accept climb rate advise ATC prior to taxi.

RUNWAY 13R: ATC climb of 482'/NM to 1700.

BELCHER TRANSITION (BACH2.EIC): From over TTT VOR/DME on TTT R-094 to POTEN, then on EIC R-259 to EIC VORTAC.

LITTLE ROCK TRANSITION (BACH2.LIT): From over TTT VOR/DME on TTT R-064 to ORTRO, then on LIT R-237 to LIT VORTAC.

SOLDO TRANSITION (BACH2.SOLDO): From over TTT VOR/DME on TTT R-084 to SOLDO.

TEXARKANA TRANSITION (BACH2.TXK): From over TTT VOR/DME on TTT R-074 to SHERO, then on TXK R-244 to TXK VORTAC.

SC-2, 16 APR 2026 to 14 MAY 2026

SC-2, 16 APR 2026 to 14 MAY 2026