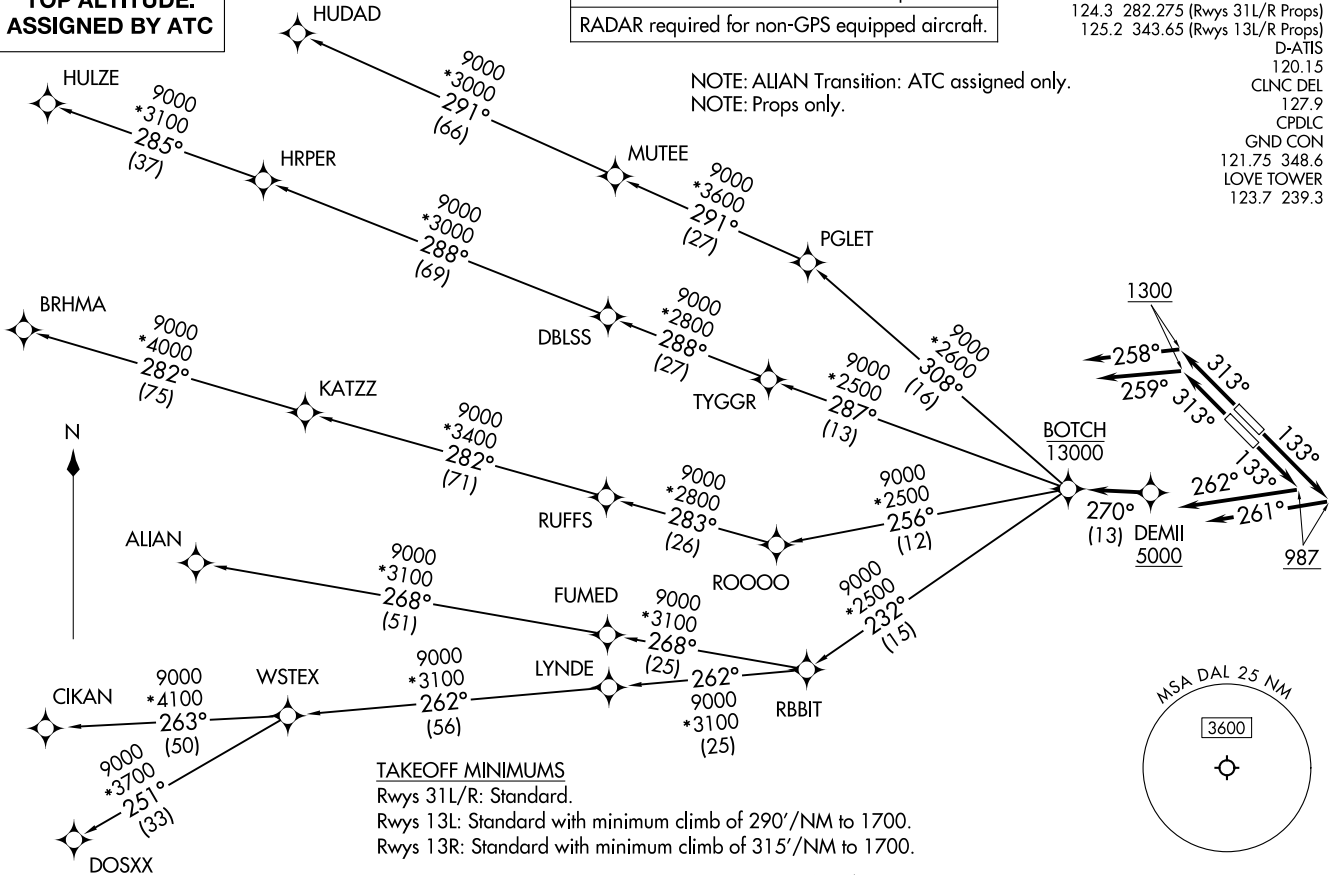


RNAV 1 - DME/DME/IRU or GPS required.  
RADAR required for non-GPS equipped aircraft.

LONE STAR DEP CON  
124.3 282.275 (Rwys 31L/R Props)  
125.2 343.65 (Rwys 13L/R Props)  
D-ATIS  
120.15  
CLNC DEL  
127.9  
CPDLC  
GND CON  
121.75 348.6  
LOVE TOWER  
123.7 239.3

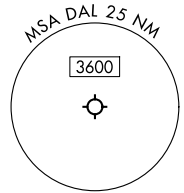
NOTE: ALIAN Transition: ATC assigned only.  
NOTE: Props only.

**TOP ALTITUDE:  
ASSIGNED BY ATC**



**TAKEOFF MINIMUMS**  
Rwys 31L/R: Standard.  
Rwys 13L: Standard with minimum climb of 290'/NM to 1700.  
Rwys 13R: Standard with minimum climb of 315'/NM to 1700.

(CONTINUED ON FOLLOWING PAGE)



NOTE: Chart not to scale.

BOTCH ONE DEPARTURE (RNAV)  
(BOTCH1 .BOTCH) 17APR25  
DALLAS, TEXAS  
DALLAS LOVE FLD (DAL)

(BOTCH1 .BOTCH) 25107  
AL-106 (FAA)  
DALLAS LOVE FLD (DAL)  
DALLAS, TEXAS

**BOTCH ONE DEPARTURE (RNAV)**



**DEPARTURE ROUTE DESCRIPTION**

TAKEOFF RUNWAY 13L: Climb on heading 133° to 987, then on heading 261° or as assigned by ATC, for vectors to cross DEMII at or above 5000, thence. . .

TAKEOFF RUNWAY 13R: Climb on heading 133° to 987, then on heading 262° or as assigned by ATC, for vectors to cross DEMII at or above 5000, thence. . .

TAKEOFF RUNWAY 31L: Climb on heading 313° to 1300, then on heading 259° or as assigned by ATC, for vectors to cross DEMII at or above 5000, thence. . .

TAKEOFF RUNWAY 31R: Climb on heading 313° to 1300, then on heading 258° or as assigned by ATC, for vectors to cross DEMII at or above 5000, thence. . .

. . .on track 270° to cross BOTCH at or below 13000, then on (transition). Maintain ATC assigned altitude, expect filed altitude 10 minutes after departure.

ALIAN TRANSITION (BOTCH1.ALIAN)

BRHMA TRANSITION (BOTCH1.BRHMA)

CIKAN TRANSITION (BOTCH1.CIKAN)

DOSXX TRANSITION (BOTCH1.DOSXX)

HUDAD TRANSITION (BOTCH1.HUDAD)

HULZE TRANSITION (BOTCH1.HULZE)

WSTEX TRANSITION (BOTCH1.WSTEX)

SC-2, 16 APR 2026 to 14 MAY 2026

SC-2, 16 APR 2026 to 14 MAY 2026