

COYOTE FOUR DEPARTURE
(CYOTE4.TTI) 25JAN24

DALLAS, TEXAS
DALLAS LOVE FLD (DAL)

**TOP ALTITUDE:
ALL RUNWAYS:
ASSIGNED BY ATC**

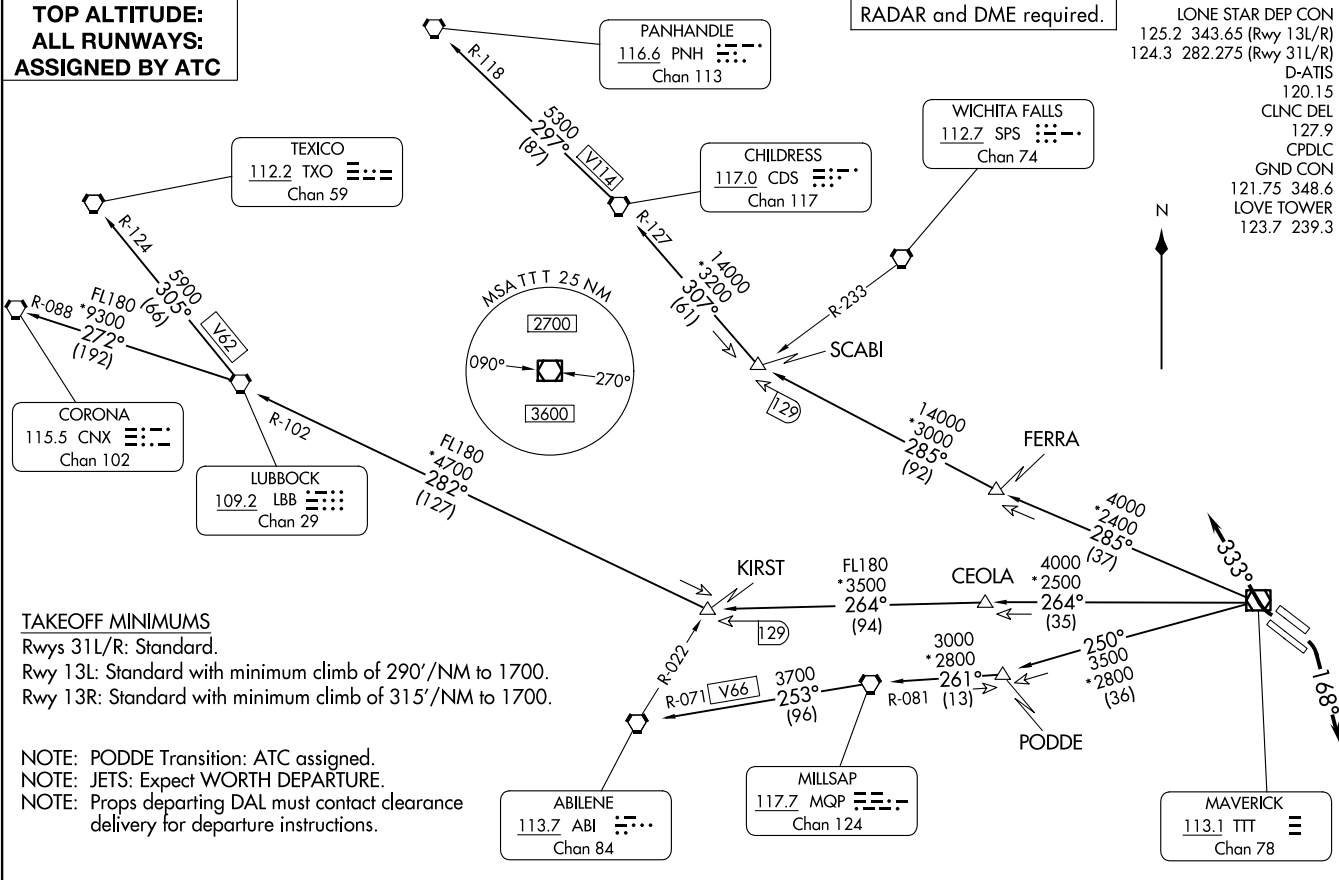
RADAR and DME required.

LONE STAR DEP CON
125.2 343.65 (Rwy 13L/R)
124.3 282.275 (Rwy 31L/R)
D-ATIS
120.15
CLNC DEL
127.9
CPDLC
GND CON
121.75 348.6
LOVE TOWER
123.7 239.3

(CYOTE4.TTI) 24305
COYOTE FOUR DEPARTURE

AL-106 (FAA)

DALLAS LOVE FLD (DAL)
DALLAS, TEXAS



TAKEOFF MINIMUMS
Rwys 31L/R: Standard.
Rwy 13L: Standard with minimum climb of 290'/NM to 1700.
Rwy 13R: Standard with minimum climb of 315'/NM to 1700.

NOTE: PODDE Transition: ATC assigned.
NOTE: JETS: Expect WORTH DEPARTURE.
NOTE: Props departing DAL must contact clearance delivery for departure instructions.

(CONTINUED ON FOLLOWING PAGE)

NOTE: Chart not to scale.

COYOTE FOUR DEPARTURE



DEPARTURE ROUTE DESCRIPTION

TAKEOFF RUNWAYS 13L/R: Climb on heading 168° for RADAR vectors to appropriate route. Maintain assigned altitude and expect filed altitude 10 minutes after departure.

TAKEOFF RUNWAYS 31L/R: Climb on heading 333° for RADAR vectors to appropriate route. Maintain assigned altitude and expect filed altitude 10 minutes after departure.

ABILENE TRANSITION (CYOTE4.ABI): From over TTT VOR/DME on TTT R-250 to PODDE, then on MQP R-081 to MQP VORTAC, then on MQP R-253 and ABI R-071 to ABI VORTAC.

CHILDRESS TRANSITION (CYOTE4.CDS): From over TTT VOR/DME on TTT R-285 to SCABI, then on CDS R-127 to CDS VORTAC.

CORONA TRANSITION (CYOTE4.CNX): From over TTT VOR/DME on TTT R-264 to KIRST, then on LBB R-102 to LBB VORTAC, then on LBB R-272 and CNX R-088 to CNX VORTAC.

LUBBOCK TRANSITION (CYOTE4.LBB): From over TTT VOR/DME on TTT R-264 to KIRST, then on LBB R-102 to LBB VORTAC.

MILLSAP TRANSITION (CYOTE4.MQP): From over TTT VOR/DME on TTT R-250 to PODDE, then on MQP R-081 to MQP VORTAC.

PANHANDLE TRANSITION (CYOTE4.PNH): From over TTT VOR/DME on TTT R-285 to SCABI, then on CDS R-127 to CDS VORTAC, then on CDS R-297 and PNH R-118 to PNH VORTAC.

PODDE TRANSITION (CYOTE4.PODDE): From over TTT VOR/DME on TTT R-250 to PODDE.

TEXICO TRANSITION (CYOTE4.TXO): From over TTT VOR/DME on TTT R-264 to KIRST, then on LBB R-102 to LBB VORTAC, then on LBB R-305 and TXO R-124 to TXO VORTAC.

SC-2, 16 APR 2026 to 14 MAY 2026

SC-2, 16 APR 2026 to 14 MAY 2026