

DALLAS FOUR DEPARTURE  
(DALL4.TTT) 27NOV25

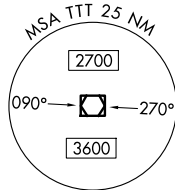
DALLAS LOVE FLD (DAL)  
DALLAS, TEXAS

LONE STAR DEP CON  
118.55 290.35  
D-ATIS  
120.15  
CLINC DEL  
127.9  
CPDLC  
GND CON  
121.75 348.6  
LOVE TOWER  
123.7 239.3

RADAR and DME required.

NOTE: BELCHER Transition: For aircraft inbound to the JAN, MLU, and SHV terminal areas only.  
NOTE: SOLDO Transition: ATC assigned.

LITTLE ROCK  
115.1 LIT  
Chan 98

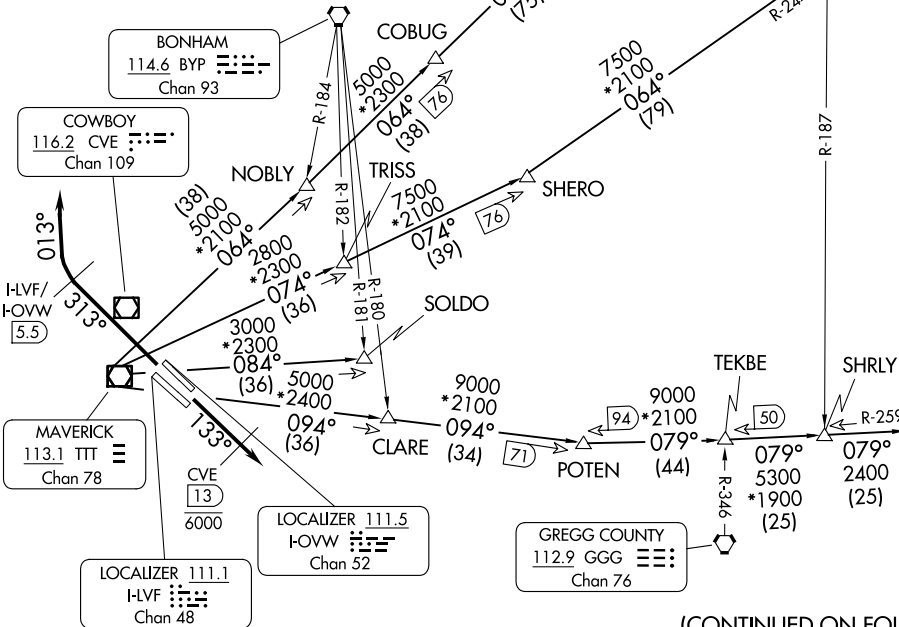


TEXARKANA  
116.3 TXK  
Chan 110

**TOP ALTITUDE:**  
**RWYS 13L/R: 8000**  
**RWYS 31L/R: ASSIGNED BY ATC**

TAKEOFF MINIMUMS

Rwys 31L/R: Standard.  
Rwy 13L: Standard with minimum climb of 290'/NM to 1700.  
Rwy 13R: Standard with minimum climb of 315'/NM to 1700.



(CONTINUED ON FOLLOWING PAGE)

NOTE: Chart not to scale.

(DALL4.TTT) 25331  
DALLAS FOUR DEPARTURE

AL-106 (FAA)

DALLAS LOVE FLD (DAL)  
DALLAS, TEXAS

# DALLAS FOUR DEPARTURE



## DEPARTURE ROUTE DESCRIPTION

### JETS:

TAKEOFF RUNWAYS 13L/R: Climb on heading 133°, cross CVE 13 DME at or below 6000, then maintain 8000 for RADAR vectors to appropriate route and expect filed altitude 10 minutes after departure.

TAKEOFF RUNWAYS 31L/R: Climb on heading 313° until the I-LVF 5.5 DME or I-OVW 5.5 DME, then right turn heading 013° for RADAR vectors to the appropriate route, maintain ATC assigned altitude and expect filed altitude 10 minutes after departure.

BELCHER TRANSITION (DALL4.EIC): From over TTT VOR/DME on TTT R-094 to POTEN, then on EIC R-259 to EIC VORTAC.

LITTLE ROCK TRANSITION (DALL4.LIT): From over TTT VOR/DME on TTT R-064 to ORTRO, then on LIT R-237 to LIT VORTAC.

SOLDO TRANSITION (DALL4.SOLDO): From over TTT VOR/DME on TTT R-084 to SOLDO.

TEXARKANA TRANSITION (DALL4.TXK): From over TTT VOR/DME on TTT R-074 to SHERO, then on TXK R-244 to TXK VORTAC.

SC-2, 16 APR 2026 to 14 MAY 2026

SC-2, 16 APR 2026 to 14 MAY 2026